



## 4 Tarqua Court MODBURY NORTH SA

3 1 2

\*For an in-depth look at this home, please click on the 3D tour for a virtual walk-through\*

Virtual Tour Link: <https://my.matterport.com/show/?m=xfwswvE5rXm>

To submit an offer, please follow this link: <https://airtable.com/shrBb12PXtTjyZAXm>

Andrew Farnworth and Edge Realty are proud to present to the market this slice of peace and privacy located in a quiet cul-de-sac doesn't require any compromising on convenience. Everything you could ever need is only moments away while at home, you'll enjoy a spacious single-storey floorplan with room for the entire family.

All three bedrooms are nestled in one section of the home with easy access to the bathroom and separate toilet.

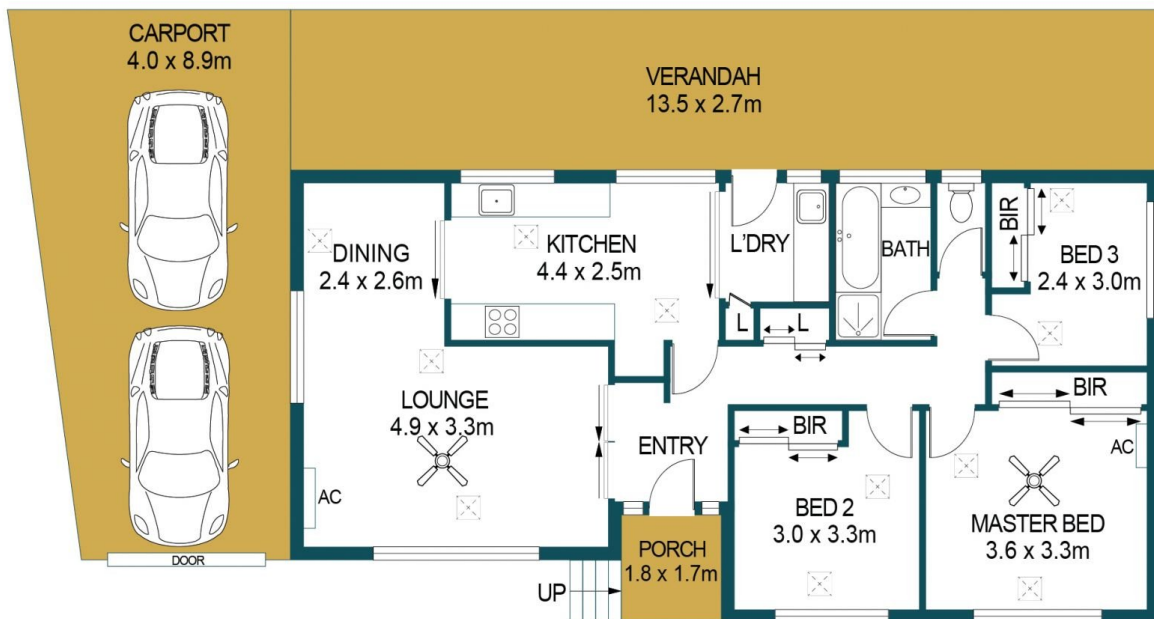
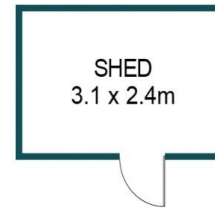
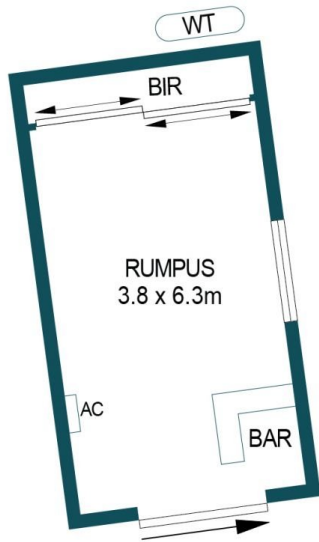
**Price** : \$ 501,000  
**Building Size** : 217 sqm  
**Land Size** : 560 sqm  
**View** : <https://www.edgerealty.com.au/sale/sa/north-north-east-suburbs/modbury-north/residential/house/6453754>



**Amy Sim**  
0430 884 244



**Tom Dunstan**  
0429656820



APPROXIMATE DIMENSIONS	
LIVING:	98.2m <sup>2</sup>
RUMPUS:	23.9m <sup>2</sup>
SHED/CARPORT:	43.0m <sup>2</sup>
PORCH/PERGOLA:	15.7m <sup>2</sup>
VERANDAH:	36.5m <sup>2</sup>
TOTAL:	217.3m <sup>2</sup>

## 4 TARQUA COURT, MODBURY NORTH

### DISCLAIMER

PLANS SHOWN ARE FOR MARKETING PURPOSES ONLY, ALL DIMENSIONS ARE APPROXIMATE AND NOT TO SCALE. THEY ARE SUBJECT TO ERRORS AND INACCURACIES AND NO LIABILITY WILL BE ACCEPTED. INTERESTED PARTIES SHOULD MAKE THEIR OWN ENQUIRIES.



IMAGES AND FLOORPLAN BY:  
**IN-HOUSE**  
IMAGING  
inhouseimaging.com.au