

### 3 Nunn Court PARALOWIE SA

4 2 3

\*For an in-depth look at this home, please click on the 3D tour for a virtual walk-through\*

Virtual Tour Link: <https://my.matterport.com/show/?m=knv3rduYDXq>

To submit an offer, please copy and paste this link into your browser: <https://airtable.com/shrBb12PXtTjyZAXm>

Mike Lao and Edge Realty are proud to present to the market this spacious and light-filled home set on an expansive 948sqm block in a highly sought after locale which is sure to impress a wide range of buyers. The layout offers an abundance of space for a growing family with a large kitchen nestled in the heart of the home.

The avid chef is treated to a new dual oven, plus a walk-in pantry, a gas cooktop and plenty of storage space. The

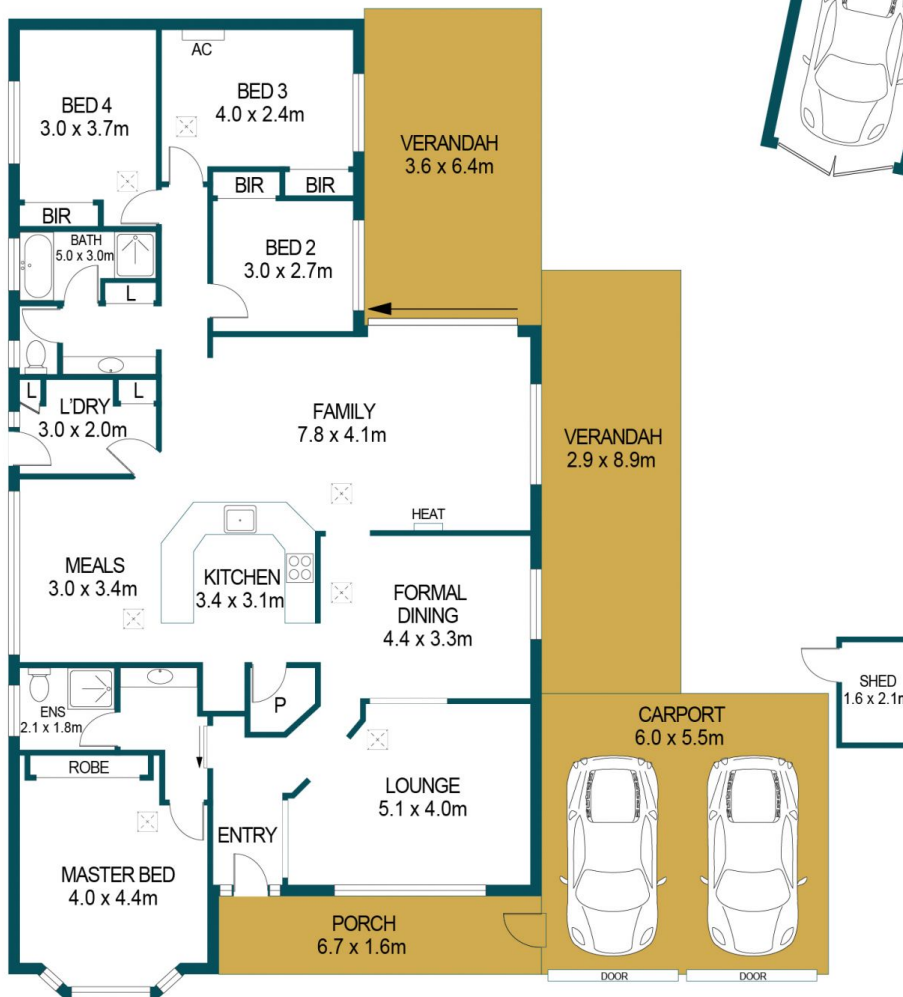
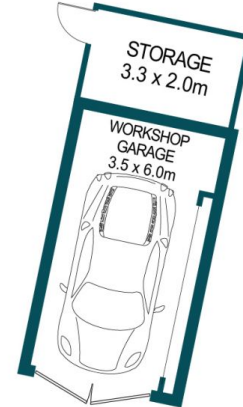
**Price** : \$ 505,000  
**Building Size** : 166 sqm  
**Land Size** : 948 sqm  
**View** : <https://www.edgerealty.com.au/sale/sa/north-north-east-suburbs/paralowie/residential/house/6453763>



**Mike Lao**  
0410390250



**Stephen Legierski**  
0438888114



APPROXIMATE DIMENSIONS	
LIVING:	166.2 m <sup>2</sup>
GARAGE:	21.0m <sup>2</sup>
CARPORT:	33.0m <sup>2</sup>
PORCH:	10.7m <sup>2</sup>
VERANDAH:	48.9m <sup>2</sup>
GREEN HOUSE:	32.3m <sup>2</sup>
SHED:	5.5m <sup>2</sup>
TOTAL:	317.6m <sup>2</sup>

## 3 NUNN COURT, PARALOWIE

### DISCLAIMER

PLANS SHOWN ARE FOR MARKETING PURPOSES ONLY, ALL DIMENSIONS ARE APPROXIMATE AND NOT TO SCALE. THEY ARE SUBJECT TO ERRORS AND INACCURACIES AND NO LIABILITY WILL BE ACCEPTED. INTERESTED PARTIES SHOULD MAKE THEIR OWN ENQUIRIES.



IMAGES AND FLOORPLAN BY:  
**IN-HOUSE**  
IMAGING  
inhouseimaging.com.au