



**78 Whittington Road DAVOREN PARK SA**

3 1 2

To submit an offer, please copy and paste this link into your browser: <https://airtable.com/shrBb12PXtTjyZAXm>

Mike Lao and Edge Realty are proud to present to the market this bright and inviting home that offers the perfect blend of original charm and modern comfort. Lovely original timber floors flow underfoot paired with a crisp white colour scheme and timber doors with yellow glass inserts to ensure a property with personality. This property is currently tenanted on a fixed lease of \$285 per week in place until 07.11.2021 making it the perfect addition to any investment portfolio.

The layout offers three large and light-filled bedrooms, all with access to the main bathroom with a bath and separate toilet while the main bedroom opens out to the verandah. A good-size kitchen opens into the combined living and

**Price** : \$ 280,000  
**Building Size** : 108 sqm  
**Land Size** : 750 sqm  
**View** : <https://www.edgerealty.com.au/sale/sa/north-north-east-suburbs/davoren-park/residential/house/6453778>



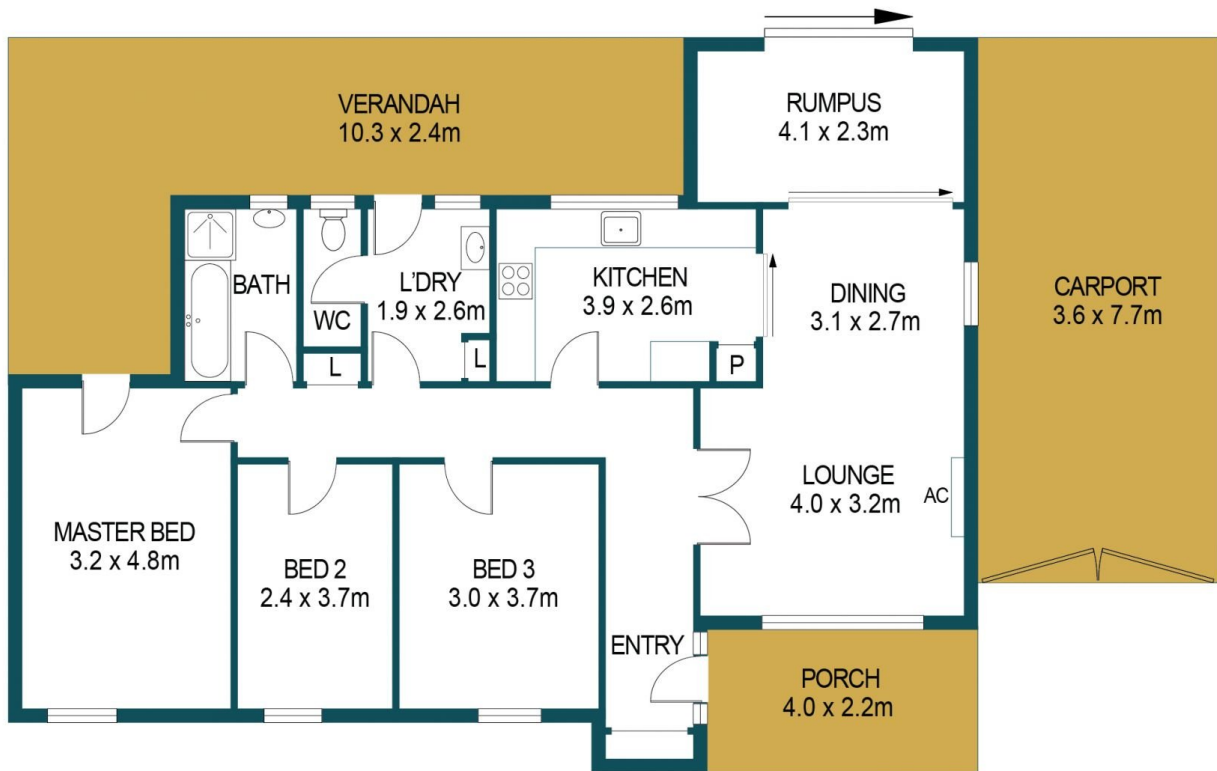
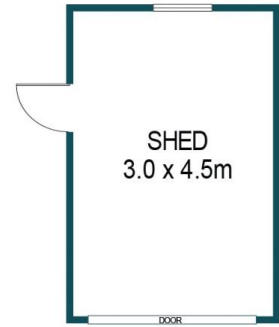
**Mike Lao**  
0410390250



**Corey Wilkop**  
0447888444



WT



APPROXIMATE DIMENSIONS	
LIVING:	108.1m <sup>2</sup>
CARPORT:	27.7m <sup>2</sup>
SHED:	13.5m <sup>2</sup>
PORCH:	8.8m <sup>2</sup>
VERANDAH:	31.3m <sup>2</sup>
TOTAL:	189.4m <sup>2</sup>

## 78 WHITINGTON ROAD, DAVOREN PARK

### DISCLAIMER

PLANS SHOWN ARE FOR MARKETING PURPOSES ONLY, ALL DIMENSIONS ARE APPROXIMATE AND NOT TO SCALE. THEY ARE SUBJECT TO ERRORS AND INACCURACIES AND NO LIABILITY WILL BE ACCEPTED. INTERESTED PARTIES SHOULD MAKE THEIR OWN ENQUIRIES.



IMAGES AND FLOORPLAN BY:  
**IN-HOUSE**  
IMAGING  
inhouseimaging.com.au