

13 Newhaven Drive CRAIGMORE SA

3 2 2

For an in-depth look at this home, please click on the 3D tour for a virtual walk-through

Virtual Tour Link:
<https://my.matterport.com/show/?m=GBcurhTNEaQ>

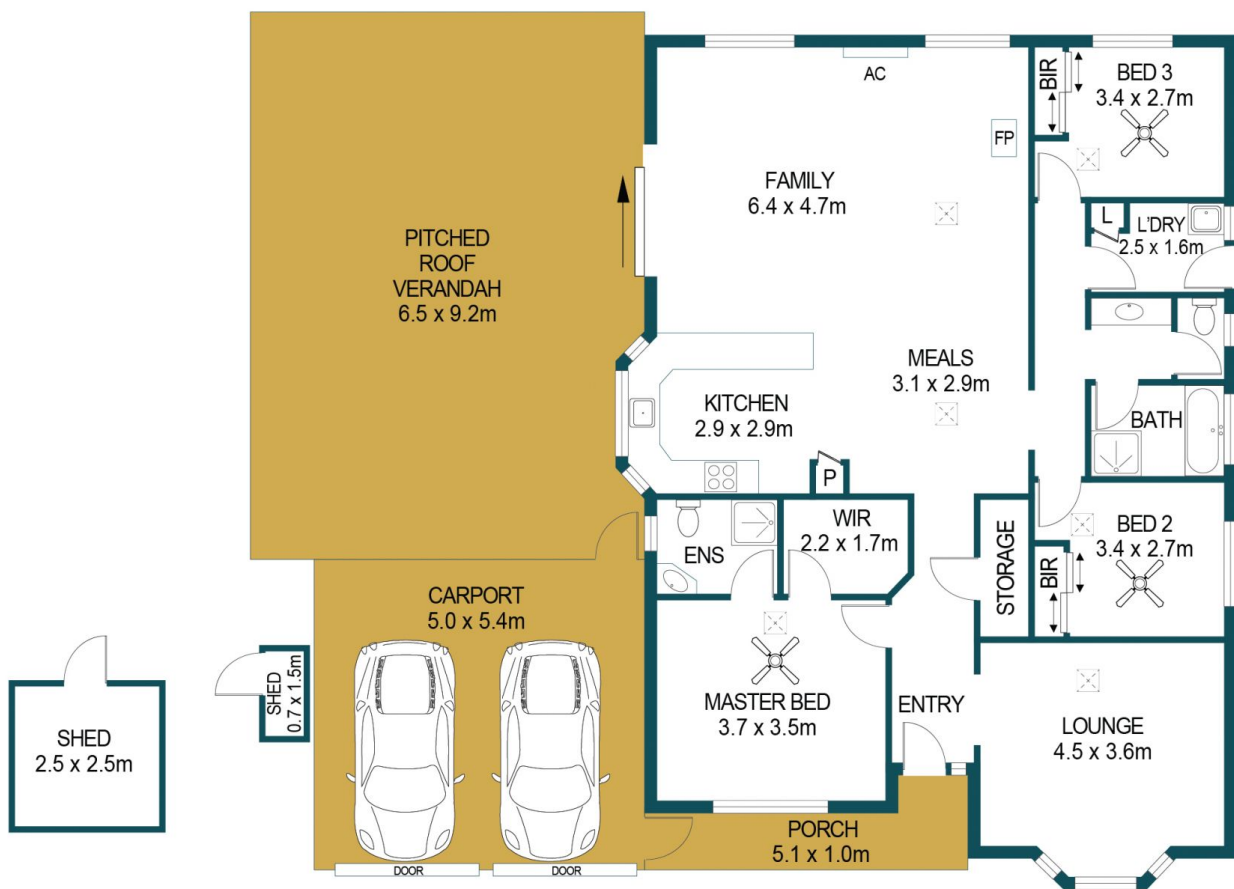
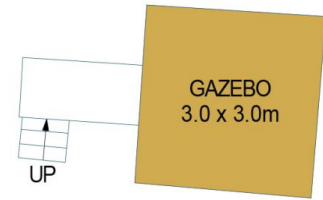
To submit an offer, please copy and paste this link into your browser: <https://airtable.com/shrBb12PXtTjyZAXm>

Matt Ashford and Edge Realty are proud to present to the market 13 Newhaven Drive, Craigmore. Modern, spacious and impeccably presented, the lucky new owners of this stunning home can simply move in and relax from the moment they are handed the keys. Fresh paint throughout plus updated fixtures and fittings ensure a bright and contemporary appeal while the functional floorplan is generous and inviting with multiple living zones and plenty of space to host guests.

Price : \$ 415,000
Building Size : 126 sqm
Land Size : 574 sqm
View : <https://www.edgerealty.com.au/sale/sa/north-north-east-suburbs/craigmore/residential/house/6469336>



Matt Ashford
 0487888178



APPROXIMATE DIMENSIONS	
LIVING:	148.0m ²
CARPORT:	27.0m ²
SHED/GAZEBO:	16.3m ²
PORCH:	5.6m ²
VERANDAH:	59.6m ²
TOTAL:	256.5m ²

13 NEWHAVEN DRIVE, CRAIGMORE

DISCLAIMER

PLANS SHOWN ARE FOR MARKETING PURPOSES ONLY, ALL DIMENSIONS ARE APPROXIMATE AND NOT TO SCALE. THEY ARE SUBJECT TO ERRORS AND INACCURACIES AND NO LIABILITY WILL BE ACCEPTED. INTERESTED PARTIES SHOULD MAKE THEIR OWN ENQUIRIES.



IMAGES AND FLOORPLAN BY:
IN-HOUSE
IMAGING
inhouseimaging.com.au