



2 Lisbon Place GOLDEN GROVE SA

3 2 1

For an in-depth look at this home, please click on the 3D virtual tour for a virtual walk-through

Virtual Tour Link: <https://my.matterport.com/show/?m=o9MWdeJ4NRf>

To submit an offer, please copy and paste this link into your browser: <https://airtable.com/shrBb12PXtTjyZAXm>

Andrew Farnworth and Edge Realty are proud to present to the market a home set behind a heritage-inspired bluestone facade. This wonderful family home is perfectly crafted for those seeking room to move, play and entertain. The expansive split-level layout features three bedrooms, two bathrooms and numerous living areas offering plenty of space for everyone to spread out and relax.

If you love to cook, a country-inspired kitchen will delight

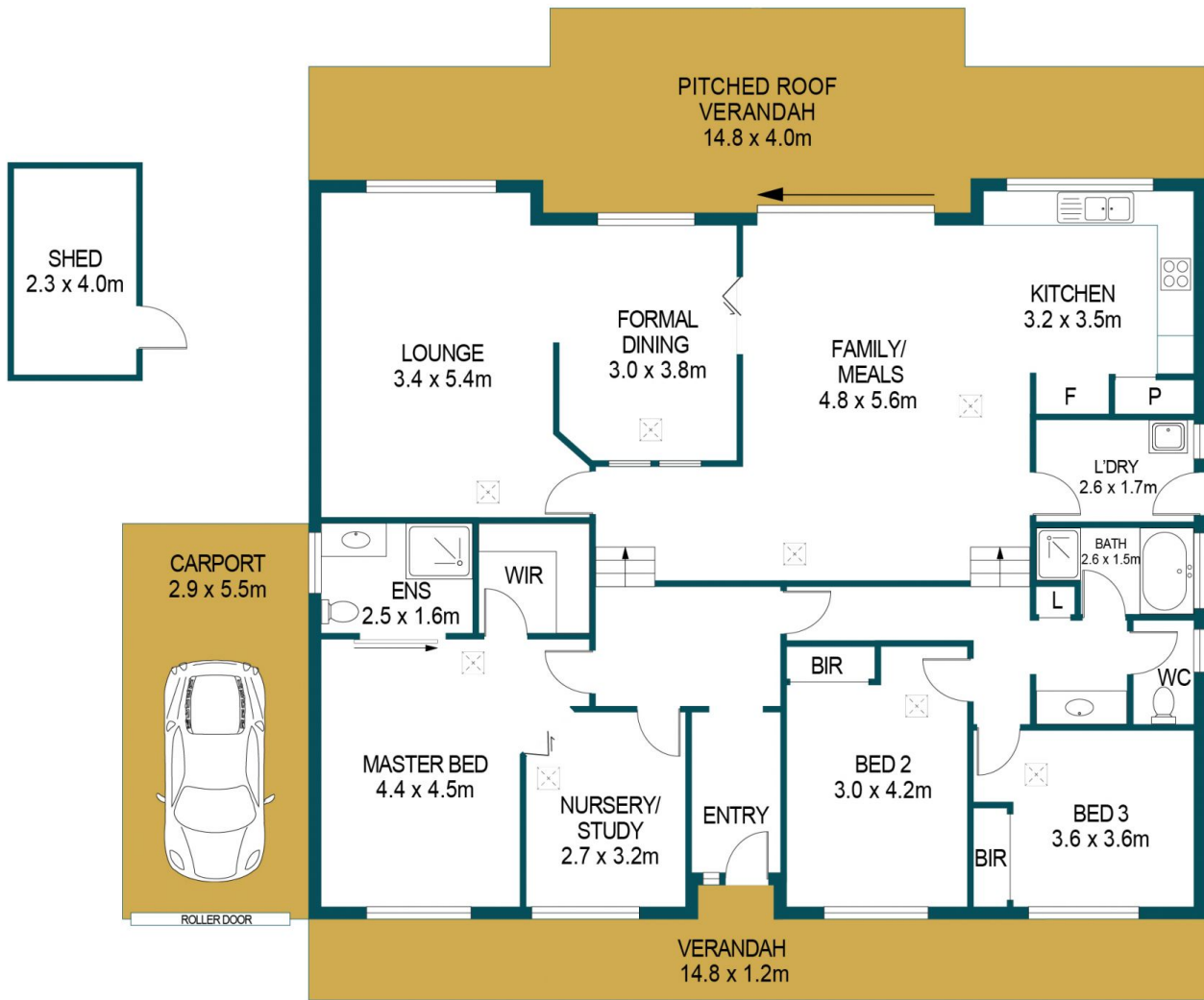
Price : \$ 602,000
Building Size : 175 sqm
Land Size : 788 sqm
View : <https://www.edgerealty.com.au/sale/sa/north-north-east-suburbs/golden-grove/residential/house/6487049>



Mike Lao
0410390250



Tom Dunstan
0429656820



APPROXIMATE DIMENSIONS	
LIVING:	175.1m ²
CARPORT:	16.0m ²
SHED:	9.2m ²
PITCHED ROOF:	59.2m ²
VERANDAH:	17.8m ²
TOTAL:	277.3m ²

2 LISBON PLACE, GOLDEN GROVE

DISCLAIMER

PLANS SHOWN ARE FOR MARKETING PURPOSES ONLY, ALL DIMENSIONS ARE APPROXIMATE AND NOT TO SCALE. THEY ARE SUBJECT TO ERRORS AND INACCURACIES AND NO LIABILITY WILL BE ACCEPTED. INTERESTED PARTIES SHOULD MAKE THEIR OWN ENQUIRIES.



IMAGES AND FLOORPLAN BY:
IN-HOUSE
IMAGING
inhouseimaging.com.au