



16 Worden Street DAVOREN PARK SA

3 1 2

To submit an offer, please copy and paste this link into your browser: <https://airtable.com/shrBb12PXtTjyZAXm>

Please note: Due to tenancy we will not be holding any private viewings prior to the first open inspection. Thank you for your understanding.

Mike Lao and Edge Realty are proud to present to the market this Davoren Park property with exciting future potential. The choice is all yours whether you wish to move in and enjoy this easy-care home as-is, renovate and add instant value or start planning your next exciting development project (STCA). Currently the property is tenanted with a fixed lease of \$220 per week in place until 05.08.2021 for instant returns!

The expansive 830sqm block has no easements and an

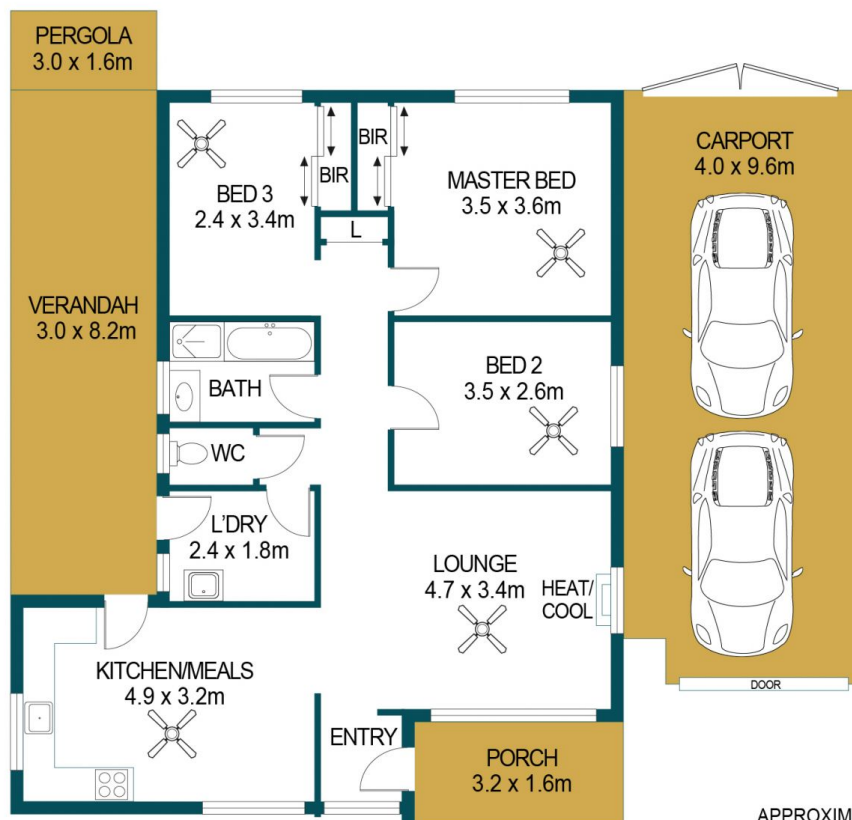
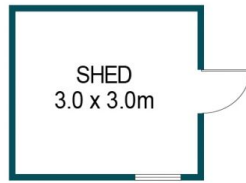
Price : \$ 220,000
Land Size : 830 sqm
View : <https://www.edgerealty.com.au/sale/sa/north-north-east-suburbs/davoren-park/residential/house/6491960>



Mike Lao
0410390250



Tyson Bennett
0437161997



APPROXIMATE DIMENSIONS	
LIVING:	90.3m ²
PORCH:	5.1m ²
CARPORT:	38.4m ²
PERGOLA:	10.8m ²
VERANDAH:	24.6m ²
SHED:	9.0m ²
TOTAL:	178.2m ²

16 WORDEN STREET, DAVOREN PARK

DISCLAIMER

PLANS SHOWN ARE FOR MARKETING PURPOSES ONLY, ALL DIMENSIONS ARE APPROXIMATE AND NOT TO SCALE. THEY ARE SUBJECT TO ERRORS AND INACCURACIES AND NO LIABILITY WILL BE ACCEPTED. INTERESTED PARTIES SHOULD MAKE THEIR OWN ENQUIRIES.



IMAGES AND FLOORPLAN BY:
IN-HOUSE
IMAGING
inhouseimaging.com.au