



4/8 John Street MANSFIELD PARK SA



For an in-depth look at this home, please click on the 3D tour for a virtual walk-through

Virtual Tour Link: <https://my.matterport.com/show/?m=nzvhBgiLijM>

To submit an offer, please copy and paste this link into your browser: <https://airtable.com/shrBb12PXtTjyZAXm>

Price : \$ 290,000
Building Size : 132 sqm
Land Size : 140 sqm
View : <https://www.edgerealty.com.au/sale/sa/western-beachside-suburbs/mansfield-park/commercial/industrial/6609806>

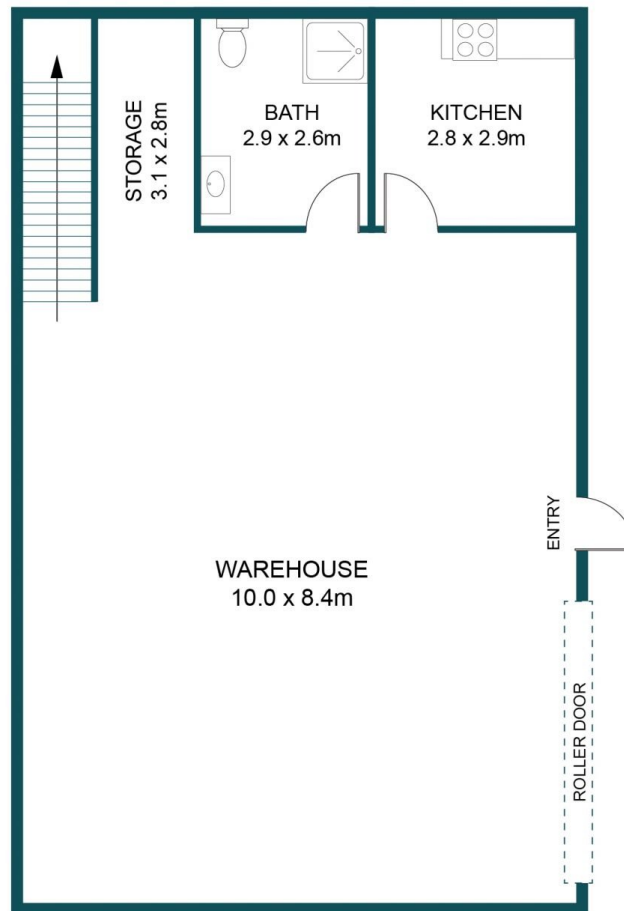
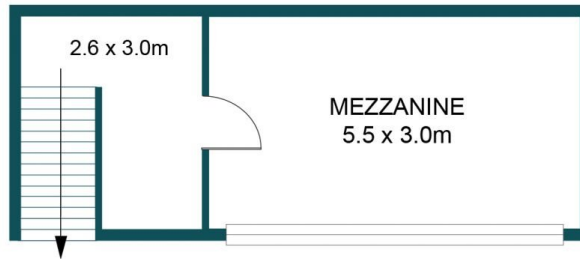
Mike Lao and Edge Realty are proud to present to the market a rare opportunity to secure a well located warehouse suitable for a range of potential uses depending on your needs. Warehouses of this calibre are hard to find. You are treated to be part of a secure facility that was newly built in 2011 and is within the residential area of Mansfield Park ensuring added security within a family friendly locale.



Mike Lao
0410390250



Corey Wilkop
0447888444



APPROXIMATE DIMENSIONS

LOWER LEVEL:	108.3m ²
UPPER LEVEL:	24.3m ²
TOTAL:	132.6m ²

4/8 JOHN STREET, MANSFIELD PARK

DISCLAIMER

PLANS SHOWN ARE FOR MARKETING PURPOSES ONLY. ALL DIMENSIONS ARE APPROXIMATE AND NOT TO SCALE. THEY ARE SUBJECT TO ERRORS AND INACCURACIES AND NO LIABILITY WILL BE ACCEPTED. INTERESTED PARTIES SHOULD MAKE THEIR OWN ENQUIRIES.