



30 West Parkway ANDREWS FARM SA

3 2 2

To submit an offer, please copy and paste this link into your browser: <https://airtable.com/shrBb12PXtTjyZAXm>

Matt Ashford, Michael DeBono and Edge Realty are proud to present to the market 30 West Parkway, Andrews Farm.

An easy-care and comfortable lifestyle awaits the new owners of 30 West Parkway located within a peaceful enclave of Andrews Farm. The single-storey layout offers three bedrooms and two bathrooms along with multiple living areas for the whole family to enjoy.

There is a large lounge room and an open-plan kitchen, meals and living room with ample room to host big family dinners. Love to cook? The kitchen is bursting with features including a stainless steel cooktop and oven, a 1.5-sink, a Bellissimo dishwasher and a tiled backsplash.

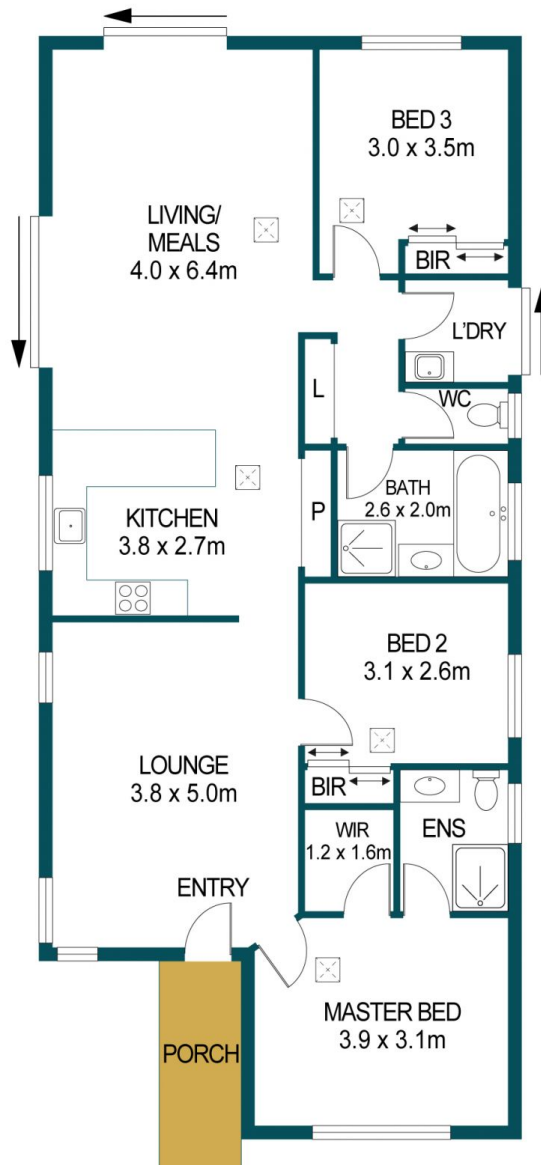
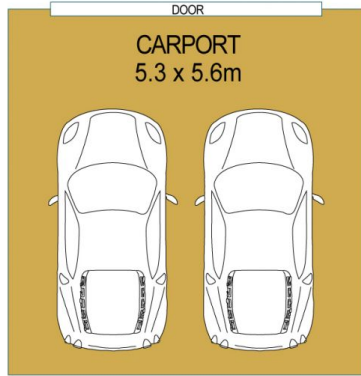
Price : \$ 330,000
Building Size : 112 sqm
Land Size : 400 sqm
View : <https://www.edgerealty.com.au/sale/sa/north-north-east-suburbs/andrews-farm/residential/house/6646986>



Matt Ashford
0487888178



Michael DeBono
0459967428



APPROXIMATE DIMENSIONS	
LIVING:	111.7m ²
PORCH:	4.0m ²
CARPORT:	29.6m ²
TOTAL:	145.3m ²

30 WEST PARKWAY, ANDREWS FARM

DISCLAIMER

PLANS SHOWN ARE FOR MARKETING PURPOSES ONLY, ALL DIMENSIONS ARE APPROXIMATE AND NOT TO SCALE. THEY ARE SUBJECT TO ERRORS AND INACCURACIES AND NO LIABILITY WILL BE ACCEPTED. INTERESTED PARTIES SHOULD MAKE THEIR OWN ENQUIRIES.



IMAGES AND FLOORPLAN BY:
IN-HOUSE
IMAGING
inhouseimaging.com.au