



12 Palmer Road ELIZABETH PARK SA

3 1 2

For an in-depth look at this home, please click on the 3D tour for a virtual walk-through

Virtual Tour Link:
<https://my.matterport.com/show/?m=kVZWjgZgtr1>

To submit an offer, please copy and paste this link into your browser: <https://airtable.com/shrBb12PXtTjyZAXm>

Mike Lao and Edge Realty are proud to present to the market this easy-care home or savvy investment property. This contemporary abode has been expertly designed for modern living with a light-filled, single-storey layout that will impress a wide range of eager house-hunters.

The three bedrooms are set off the main hallway with the master suite enjoying a large walk-in robe and ensuite access to the three-way bathroom. A separate bath,

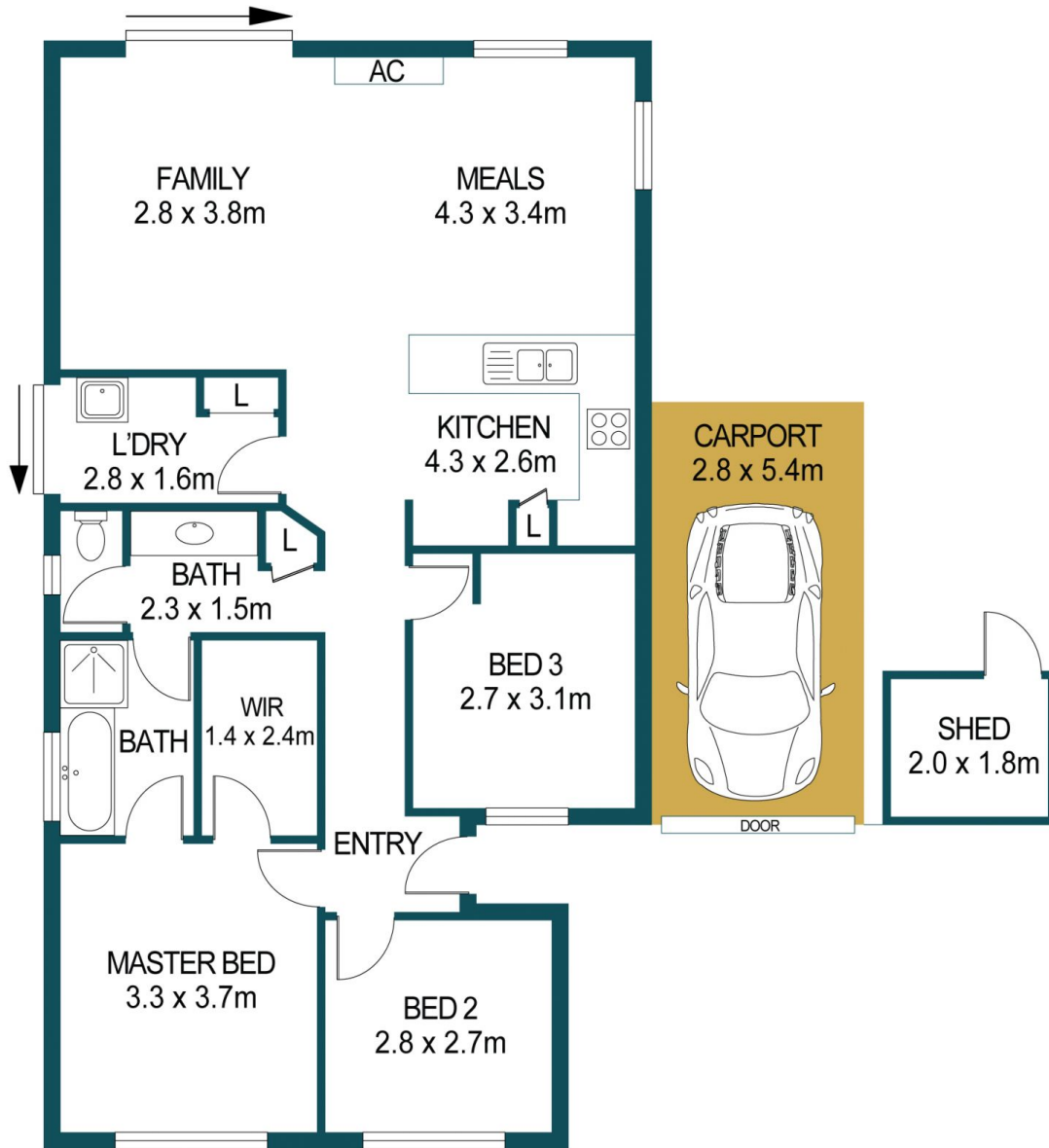
Price : \$ 300,000
Building Size : 95 sqm
Land Size : 292 sqm
View : <https://www.edgerealty.com.au/sale/sa/north-north-east-suburbs/elizabeth-park/residential/house/6663640>



Mike Lao
0410390250



Tom Dunstan
0429656820



12 PALMER ROAD, ELIZABETH PARK

APPROXIMATE DIMENSIONS	
LIVING:	95.1m ²
CARPORT:	15.1m ²
SHED:	3.6m ²
TOTAL:	113.8m ²

DISCLAIMER

PLANS SHOWN ARE FOR MARKETING PURPOSES ONLY, ALL DIMENSIONS ARE APPROXIMATE AND NOT TO SCALE. THEY ARE SUBJECT TO ERRORS AND INACCURACIES AND NO LIABILITY WILL BE ACCEPTED. INTERESTED PARTIES SHOULD MAKE THEIR OWN ENQUIRIES.



IMAGES AND FLOORPLAN BY:
IN-HOUSE
IMAGING
inhouseimaging.com.au