



29 Omega Drive BLAKEVIEW SA

2 1 1

For an in-depth look at this home, please click on the 3D tour for a virtual walk-through

Virtual Tour Link:
<https://my.matterport.com/show/?m=1kg8c3neUCi>

To submit an offer, please copy and paste this link into your browser: <https://airtable.com/shrBb12PXtTjyZAXm>

Matt Ashford and Michael DeBono are proud to present to the market 29 Omega Drive, Blakeview! The perfect combination of charm and style, this idyllic abode would make an enviable first home, downsizer or investment.

From the moment you step inside, you are welcomed into the light-filled lounge room with floating floors and a small bay window. The well-appointed kitchen, with plenty of bench space is set in the heart of the home plus there's

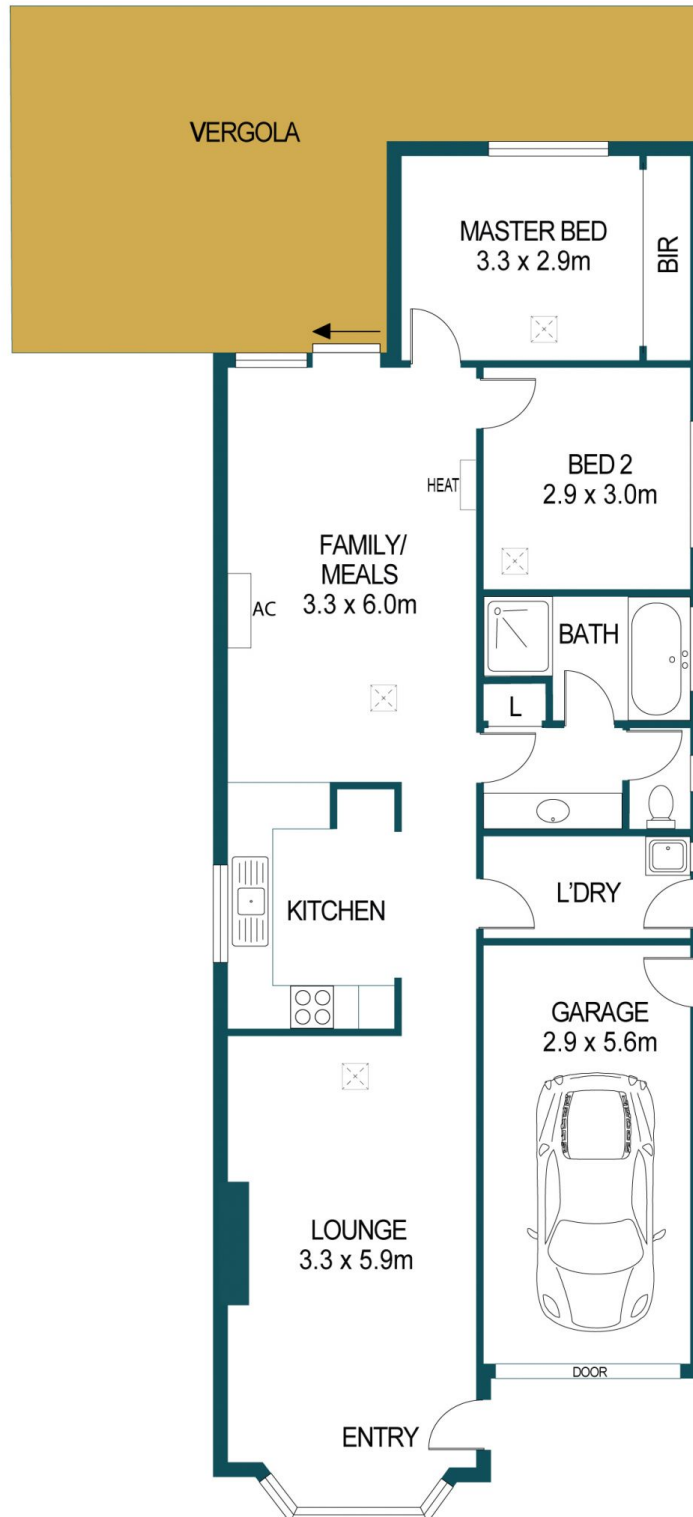
Price : \$ 294,500
Building Size : 103 sqm
Land Size : 380 sqm
View : <https://www.edgerealty.com.au/sale/sa/north-north-east-suburbs/blakeview/residential/house/6684977>



Matt Ashford
0487888178



Michael DeBono
0459967428



APPROXIMATE DIMENSIONS	
LIVING:	103.6m ²
GARAGE:	16.2m ²
VERGOLA:	38.9m ²
TOTAL:	158.7m ²

29 OMEGA DRIVE, BLAKEVIEW

DISCLAIMER

PLANS SHOWN ARE FOR MARKETING PURPOSES ONLY. ALL DIMENSIONS ARE APPROXIMATE AND NOT TO SCALE. THEY ARE SUBJECT TO ERRORS AND INACCURACIES AND NO LIABILITY WILL BE ACCEPTED. INTERESTED PARTIES SHOULD MAKE THEIR OWN ENQUIRIES.



IMAGES AND FLOORPLAN BY:
IN-HOUSE
IMAGING
inhouseimaging.com.au