



5 Sullivan Road ELIZABETH PARK SA

2 1 2

To submit an offer, please copy and paste this link into your browser: <https://airtable.com/shrBb12PXtTjyZAXm>

Mike Lao and Edge Realty are proud to present this charming abode that's perfectly suited to first-time buyers, downsizers and discerning investors alike. Currently tenanted on a fixed lease until June 2022 and returning \$246 per week, this is an easy-care, set-and-forget addition to any property portfolio.

For those wanting their first home and somewhere to call their own, you can't go past the easy-care lifestyle this abode offers. From entry you can move into the light filled lounge room with air conditioning and pine floorboards underfoot. The eager cook will instantly feel at home in the galley shaped kitchen with plenty of bench space either side, a freestanding electric cooktop and oven and you can

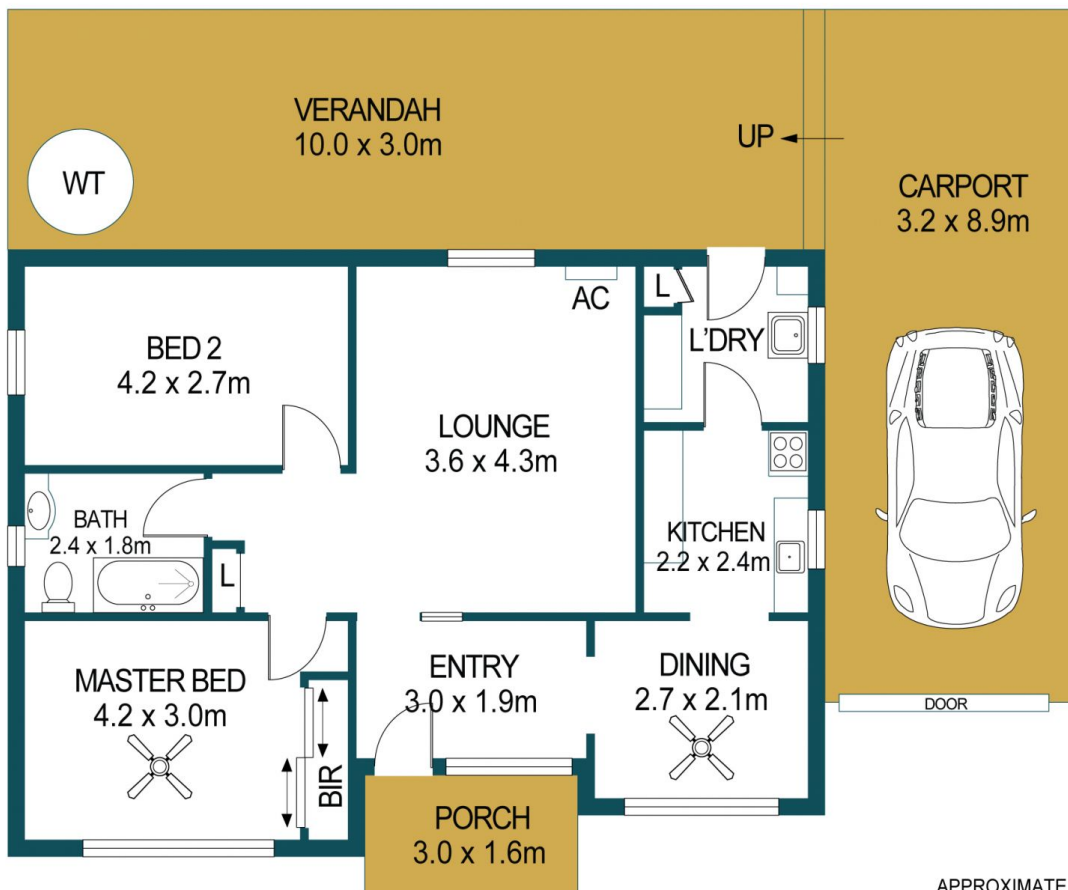
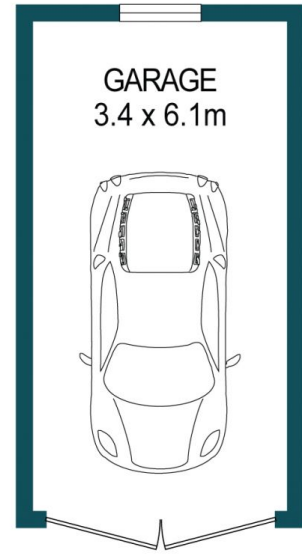
Price : \$ 276,013
Building Size : 67 sqm
Land Size : 800 sqm
View : <https://www.edgerealty.com.au/sale/sa/north-north-east-suburbs/elizabeth-park/residential/house/6702022>



Mike Lao
0410390250



Tom Dunstan
0429656820



APPROXIMATE DIMENSIONS

LIVING:	67.4m ²
GARAGE:	20.7m ²
CARPOR:	28.5m ²
PORCH:	4.8m ²
VERANDAH:	30.0m ²
TOTAL:	151.4m ²

5 SULLIVAN ROAD, ELIZABETH PARK

DISCLAIMER

PLANS SHOWN ARE FOR MARKETING PURPOSES ONLY, ALL DIMENSIONS ARE APPROXIMATE AND NOT TO SCALE. THEY ARE SUBJECT TO ERRORS AND INACCURACIES AND NO LIABILITY WILL BE ACCEPTED. INTERESTED PARTIES SHOULD MAKE THEIR OWN ENQUIRIES.



IMAGES AND FLOORPLAN BY:
IN-HOUSE
IMAGING
inhouseimaging.com.au