

## 1 Comley Court SALISBURY PLAIN SA

3 2 2

\*For an in-depth look at this home, please click on the 3D tour for a virtual walk-through\*

Virtual Tour Link:  
<https://my.matterport.com/show/?m=L1rU5kk3K9h>

To submit an offer, please copy and paste this link into your browser: <https://airtable.com/shrBb12PXtTjyZAXm>

Mike Lao, Corey Wilkop and Edge Realty are proud to present to the market this Salisbury Plain sanctuary set on a prized corner lot. Ideal for families craving comfort, space and convenience, this is your chance to secure a beautifully maintained and move-in-ready home in a sought-after location.

There are three bedrooms and two bathrooms spread throughout the single-storey floorplan including the master

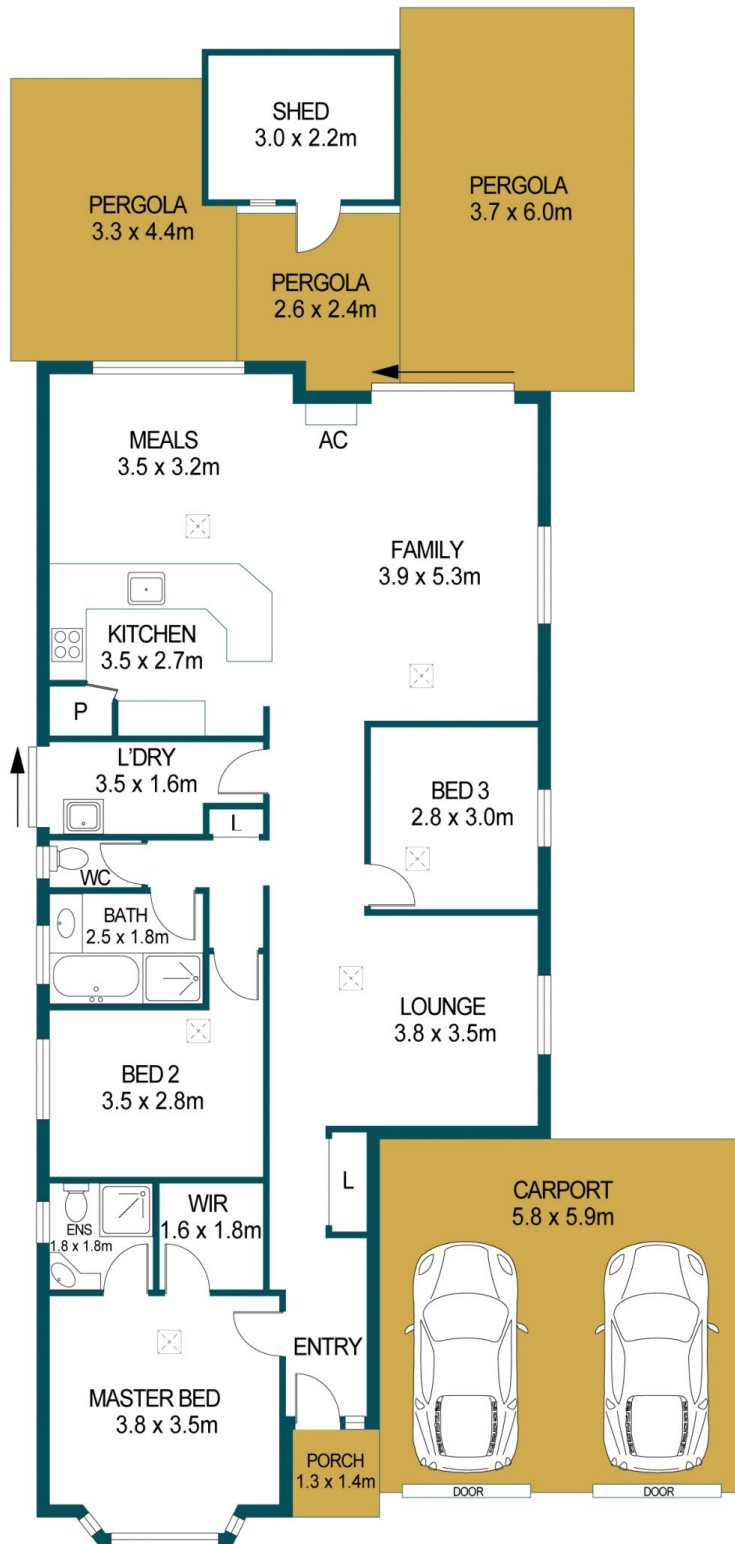
**Price** : \$ 450,000  
**Building Size** : 128 sqm  
**Land Size** : 483 sqm  
**View** : <https://www.edgerealty.com.au/sale/sa/north-north-east-suburbs/salisbury-plain/residential/house/6704718>



**Mike Lao**  
0410390250



**Corey Wilkop**  
0447888444



APPROXIMATE DIMENSIONS	
LIVING:	128.2m <sup>2</sup>
PORCH:	1.8m <sup>2</sup>
CARPOR:	34.2m <sup>2</sup>
SHED:	11.6m <sup>2</sup>
PERGOLA:	43.8m <sup>2</sup>
TOTAL:	219.6m <sup>2</sup>

## 1 COMLEY COURT, SALISBURY PLAIN

### DISCLAIMER

PLANS SHOWN ARE FOR MARKETING PURPOSES ONLY, ALL DIMENSIONS ARE APPROXIMATE AND NOT TO SCALE. THEY ARE SUBJECT TO ERRORS AND INACCURACIES AND NO LIABILITY WILL BE ACCEPTED. INTERESTED PARTIES SHOULD MAKE THEIR OWN ENQUIRIES.



IMAGES AND FLOORPLAN BY:  
**IN-HOUSE**  
IMAGING  
inhouseimaging.com.au