



**41 Main North Road SMITHFIELD SA**

4 1 1

\*For an in-depth look at this home, please click on the 3D tour for a virtual walk-through\*

Virtual Tour Link: <https://my.matterport.com/show/?m=eH8M45du6Xe>

To submit an offer, please copy and paste this link into your browser: <https://airtable.com/shrBb12PXtTjyZAXm>

Mike Lao and Edge Realty are proud to present to the market an exciting opportunity to secure a family home or investment property in an ultra-convenient location. Investors will appreciate this set and forget investment with fantastic long term tenants already on a fixed lease of \$310 per week until 28.02.2022.

Comfort, space and charm are all yours to enjoy while the prime Smithfield address places you within easy reach of

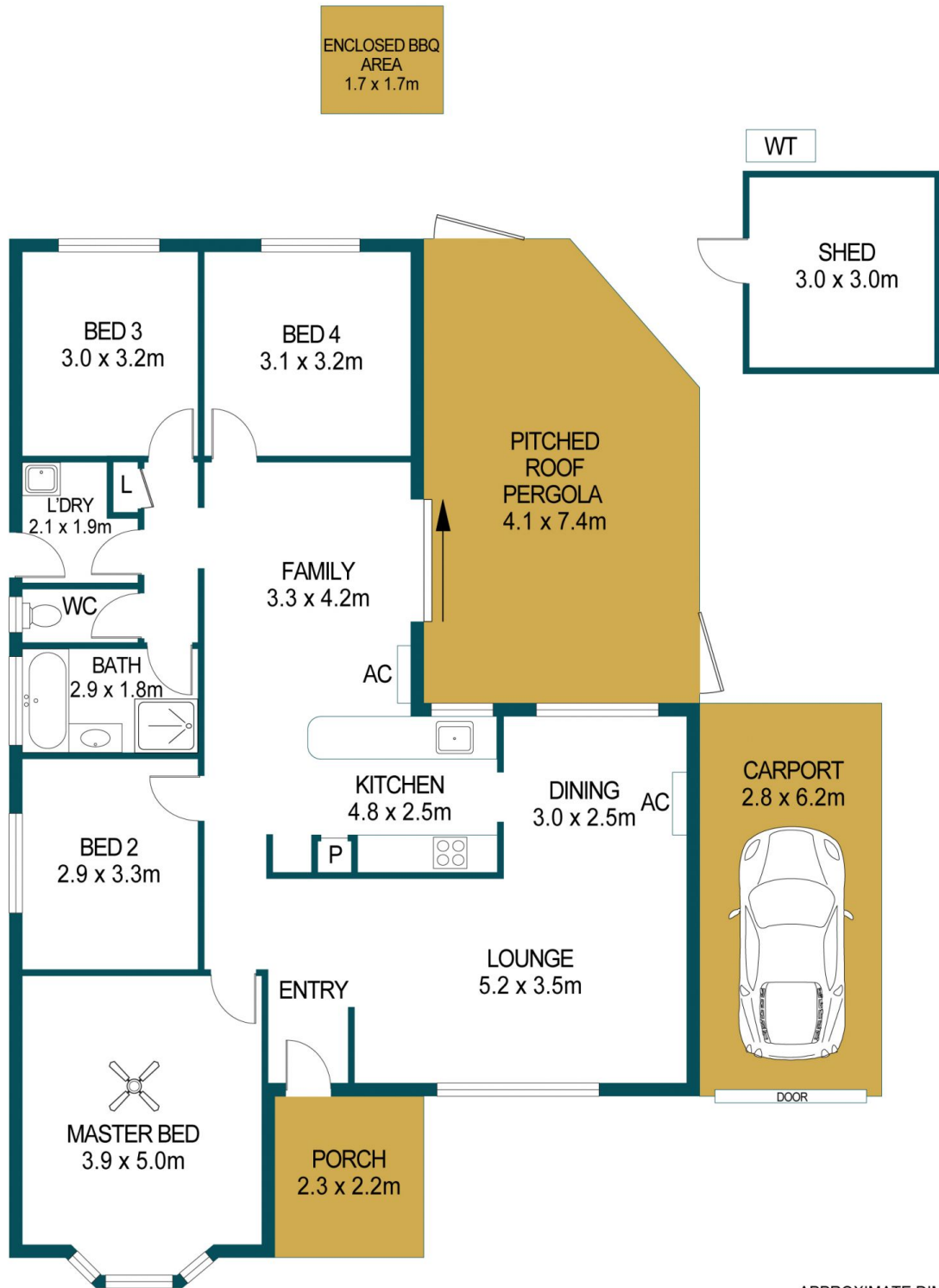
**Price** : \$ 328,000  
**Building Size** : 123 sqm  
**Land Size** : 529 sqm  
**View** : <https://www.edgerealty.com.au/sale/sa/north-north-east-suburbs/smithfield/residential/house/6724875>



**Mike Lao**  
0410390250



**Tom Dunstan**  
0429656820



APPROXIMATE DIMENSIONS	
LIVING:	123.3m <sup>2</sup>
PORCH:	5.0m <sup>2</sup>
CARPORT:	17.3m <sup>2</sup>
PERGOLA:	30.3m <sup>2</sup>
SHED:	9.0m <sup>2</sup>
ENCLOSED:	2.8m <sup>2</sup>
TOTAL:	187.7m <sup>2</sup>

## 41 MAIN NORTH ROAD, SMITHFIELD

### DISCLAIMER

PLANS SHOWN ARE FOR MARKETING PURPOSES ONLY, ALL DIMENSIONS ARE APPROXIMATE AND NOT TO SCALE. THEY ARE SUBJECT TO ERRORS AND INACCURACIES AND NO LIABILITY WILL BE ACCEPTED. INTERESTED PARTIES SHOULD MAKE THEIR OWN ENQUIRIES.



IMAGES AND FLOORPLAN BY:  
**IN-HOUSE**  
IMAGING  
inhouseimaging.com.au