



9 Wattlebird Drive BURTON SA

3 2 2

For an in-depth look at this home, please click on the 3D tour for a virtual walk-through

Virtual Tour Link:
<https://my.matterport.com/show/?m=6BASb9X75oh>

Auction: Saturday 29th January 2022 onsite at 3:30pm

To submit an offer, please copy and paste this link into your browser: <https://airtable.com/shrBb12PXtTjyZAXm>

Mike Lao, Tom Dunstan and Edge Realty are proud to present to the market your next family home or addition to your investment portfolio. Crafted for low-maintenance living, this Burton beauty will appeal to anyone on the hunt for a property they'll be proud to call their own.

You are spoiled for choice when it comes to living space

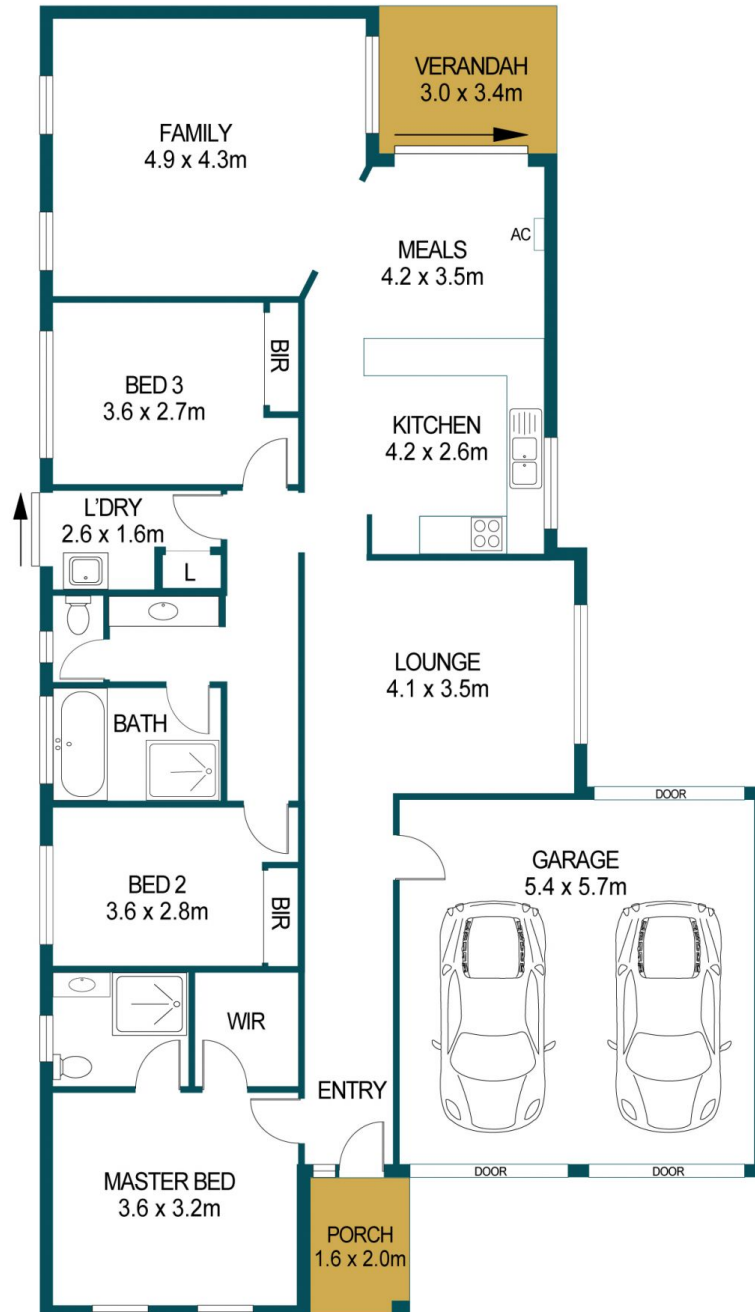
Price : \$ 461,000
Building Size : 139 sqm
Land Size : 376 sqm
View : <https://www.edgerealty.com.au/sale/sa/north-north-east-suburbs/burton/residential/house/6804124>



Mike Lao
 0410390250



SHED
2.3 x 2.3m



APPROXIMATE DIMENSIONS

LIVING:	139.5m ²
GARAGE:	30.8m ²
PORCH:	3.2m ²
VERANDAH:	10.2m ²
SHED:	5.3m ²
TOTAL:	189.0m ²

9 WATTLEBIRD DRIVE, BURTON

DISCLAIMER

PLANS SHOWN ARE FOR MARKETING PURPOSES ONLY, ALL DIMENSIONS ARE APPROXIMATE AND NOT TO SCALE. THEY ARE SUBJECT TO ERRORS AND INACCURACIES AND NO LIABILITY WILL BE ACCEPTED. INTERESTED PARTIES SHOULD MAKE THEIR OWN ENQUIRIES.



IMAGES AND FLOORPLAN BY:
IN-HOUSE
IMAGING
inhouseimaging.com.au