

**8/1584 Main North Road BRAHMA LODGE SA**

**3**  **2**  **1** 

To submit an offer, please copy and paste this link into your browser: <https://airtable.com/shrBb12PXtTjyZAXm>

Mike Lao, Tyson Bennett and Edge Realty are proud to present to the market modern and easy-care living in Brahma Lodge. This two-storey townhouse is set within a small and friendly community offering a life of absolute leisure while still being close to schools, shops, parks and public transport links.

An open-plan kitchen, meals and family room is set on the ground floor with low-maintenance tile floors and direct access to the covered entertainer's verandah. Cooking for loved ones will be a breeze in the well-equipped chef's kitchen with a stainless steel gas cooktop and oven plus there's also a PuraTap, laminate benchtops, a tiled backsplash and a built-in pantry.

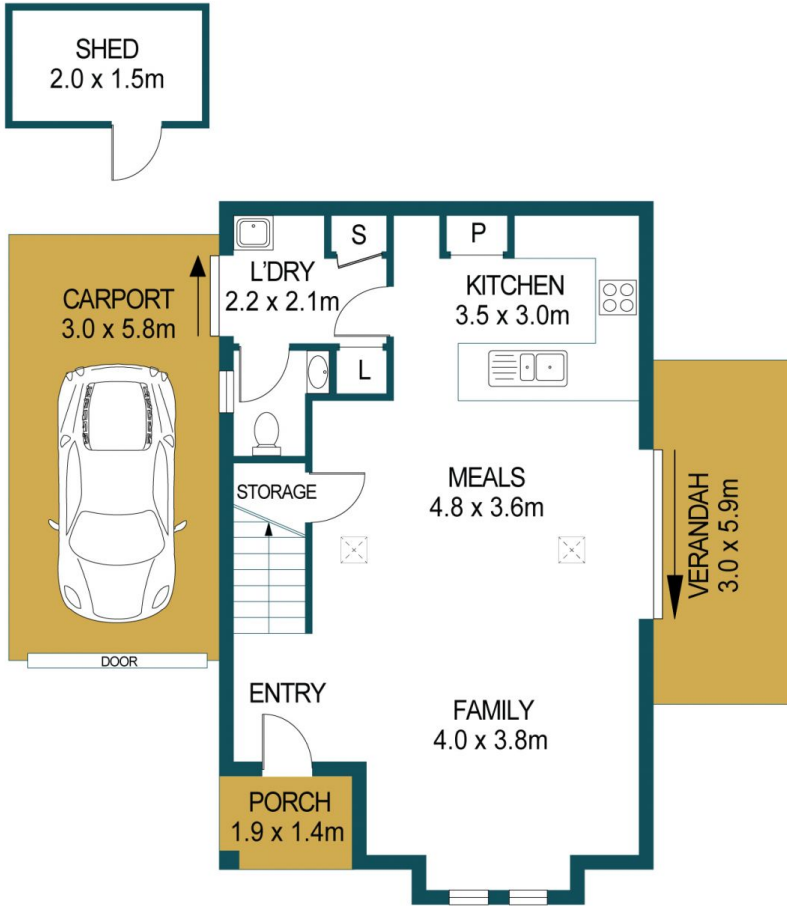
**Price** : \$ 420,000  
**Building Size** : 119 sqm  
**Land Size** : 192 sqm  
**View** : <https://www.edgerealty.com.au/sale/sa/north-north-east-suburbs/brahma-lodge/residential/townhouse/6827990>



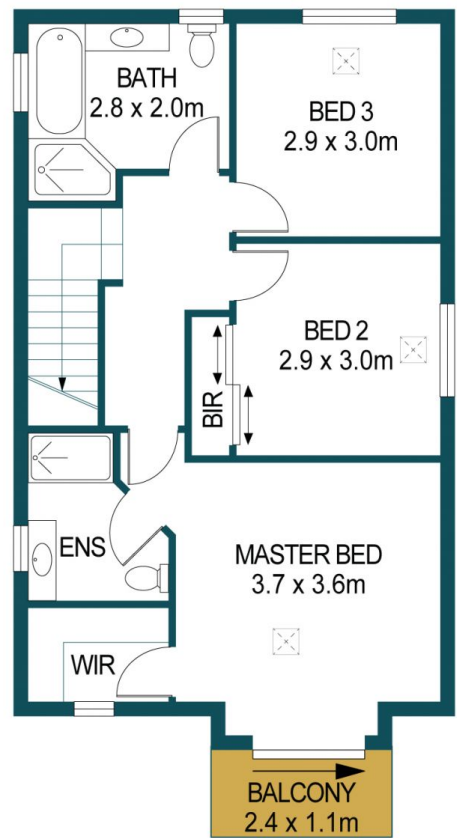
**Mike Lao**  
0410390250



**Tyson Bennett**  
0437161997



GROUND FLOOR



FIRST FLOOR

APPROXIMATE DIMENSIONS

LIVING:	119.2m <sup>2</sup>
CARPORNT:	17.4m <sup>2</sup>
SHED/PORCH:	5.7m <sup>2</sup>
BALCONY:	2.6m <sup>2</sup>
VERANDAH:	8.4m <sup>2</sup>
TOTAL:	153.3m <sup>2</sup>

## 8/1584 MAIN NORTH ROAD, BRAHMA LODGE

DISCLAIMER

PLANS SHOWN ARE FOR MARKETING PURPOSES ONLY, ALL DIMENSIONS ARE APPROXIMATE AND NOT TO SCALE. THEY ARE SUBJECT TO ERRORS AND INACCURACIES AND NO LIABILITY WILL BE ACCEPTED. INTERESTED PARTIES SHOULD MAKE THEIR OWN ENQUIRIES.



IMAGES AND FLOORPLAN BY:  
**IN-HOUSE**  
IMAGING  
inhouseimaging.com.au