



70 Daniel Avenue GLOBE DERBY PARK SA

3 2 6

To submit an offer, please copy and paste this link into your browser: <https://airtable.com/shrBb12PXtTjyZAXm>

Mike Lao, Corey Wilkop and Edge Realty RLA256385 are proud to present to the market this incredible property offering all the space you could ever need. There's room for a large family and your horses while still enjoying landscaped gardens and a veggie patch within this tranquil family friendly neighbourhood; this is your chance to have it all.

There are three bedrooms, all with ducted air conditioning and ceiling fans, one with a walk-in robe and ensuite and the other two with built-in robes and easy access to the bathroom. When it's time to relax, a beautiful open plan family room is warmed by a fireplace and there is a light-filled lounge ready for you and your favourite book.

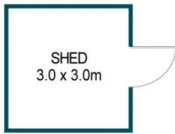
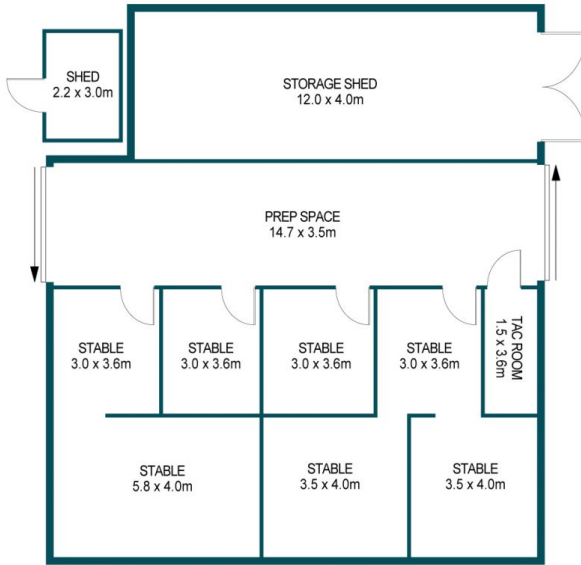
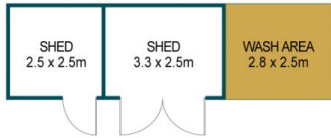
Price : \$ 650,000
Building Size : 202 sqm
Land Size : 2829 sqm
View : <https://www.edgerealty.com.au/sale/sa/north-north-east-suburbs/globe-derby-park/residential/house/6833471>



Mike Lao
0410390250



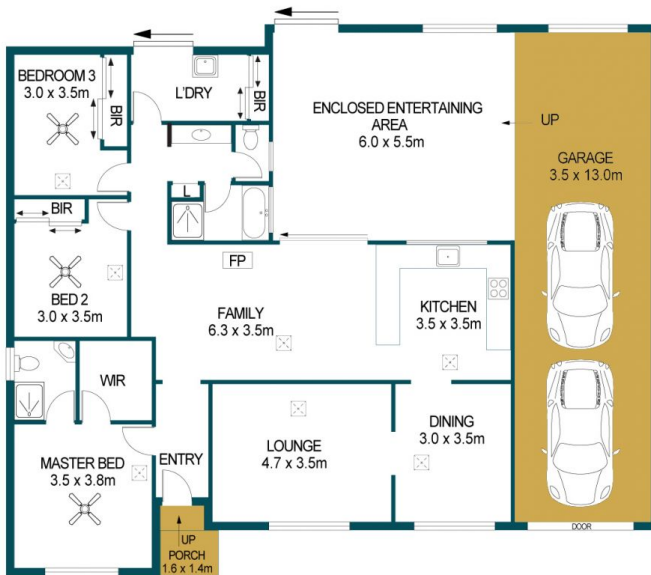
Tyson Bennett
0437161997



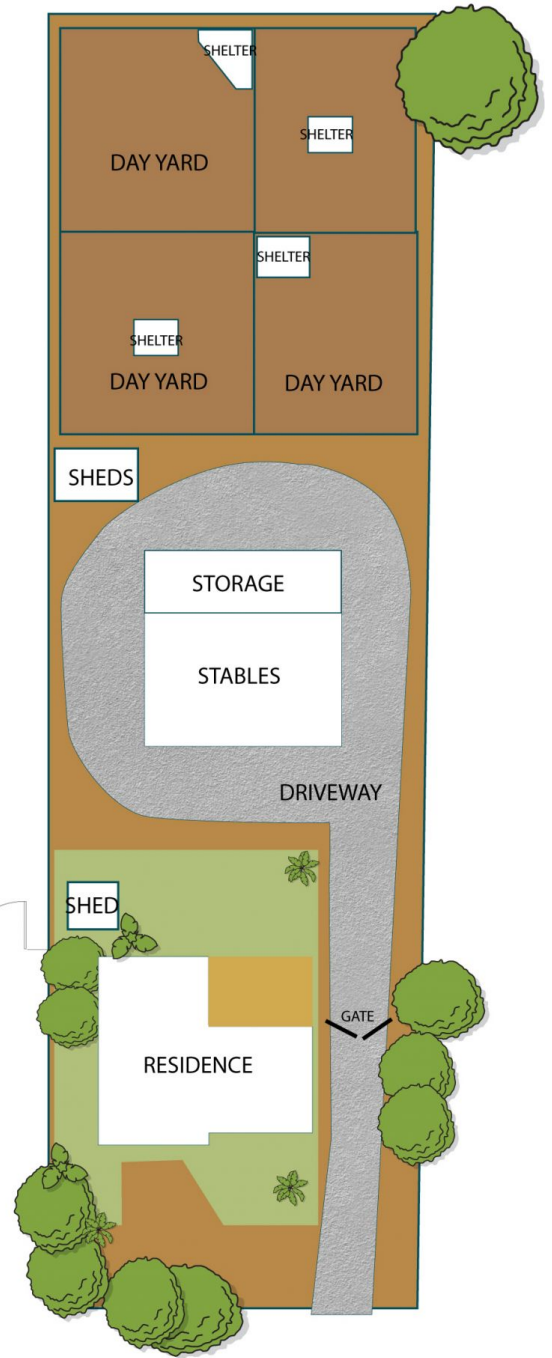
WT

WT

WT



RESIDENCE



APPROXIMATE DIMENSIONS	
LIVING:	202.7m ²
GARAGE:	45.5m ²
PORCH:	2.2m ²
SHED:	78.2m ²
STABLE:	94.4m ²
PREP SPACE:	51.5m ²
SHELTER:	40.0m ²
DAY YARD:	852.0m ²
ENTERTAINING:	33.0m ²
WASH AREA:	7.0m ²
TOTAL:	1406.5m²

70 DANIEL AVENUE, GLOBE DERBY PARK

DISCLAIMER

PLANS SHOWN ARE FOR MARKETING PURPOSES ONLY, ALL DIMENSIONS ARE APPROXIMATE AND NOT TO SCALE. THEY ARE SUBJECT TO ERRORS AND INACCURACIES AND NO LIABILITY WILL BE ACCEPTED. INTERESTED PARTIES SHOULD MAKE THEIR OWN ENQUIRIES.



IMAGES AND FLOORPLAN BY:
IN-HOUSE
 IMAGING
 inhouseimaging.com.au