



10 Winkle Street ELIZABETH DOWNS SA

3 1 3

For an in-depth look at this home, please click on the 3D tour for a virtual walk-through

Virtual Tour Link: <https://my.matterport.com/show/?m=QDSkTbgzSmP>

To submit an offer, please copy and paste this link into your browser: <https://airtable.com/shrBb12PXtTjyZAXm>

Mike Lao, Corey Wilkop and Edge Realty RLA256385 are proud to present to the market this spacious adobe perfectly crafted for family living. This is your chance to entertain in style with a pool, a rumpus and a wonderful yard ready for endless hours of fun this summer.

Inside, gorgeous timber floors flow underfoot throughout the light-filled lounge room and the hallway. In the kitchen and meals area, easy-care tile flooring is on show paired

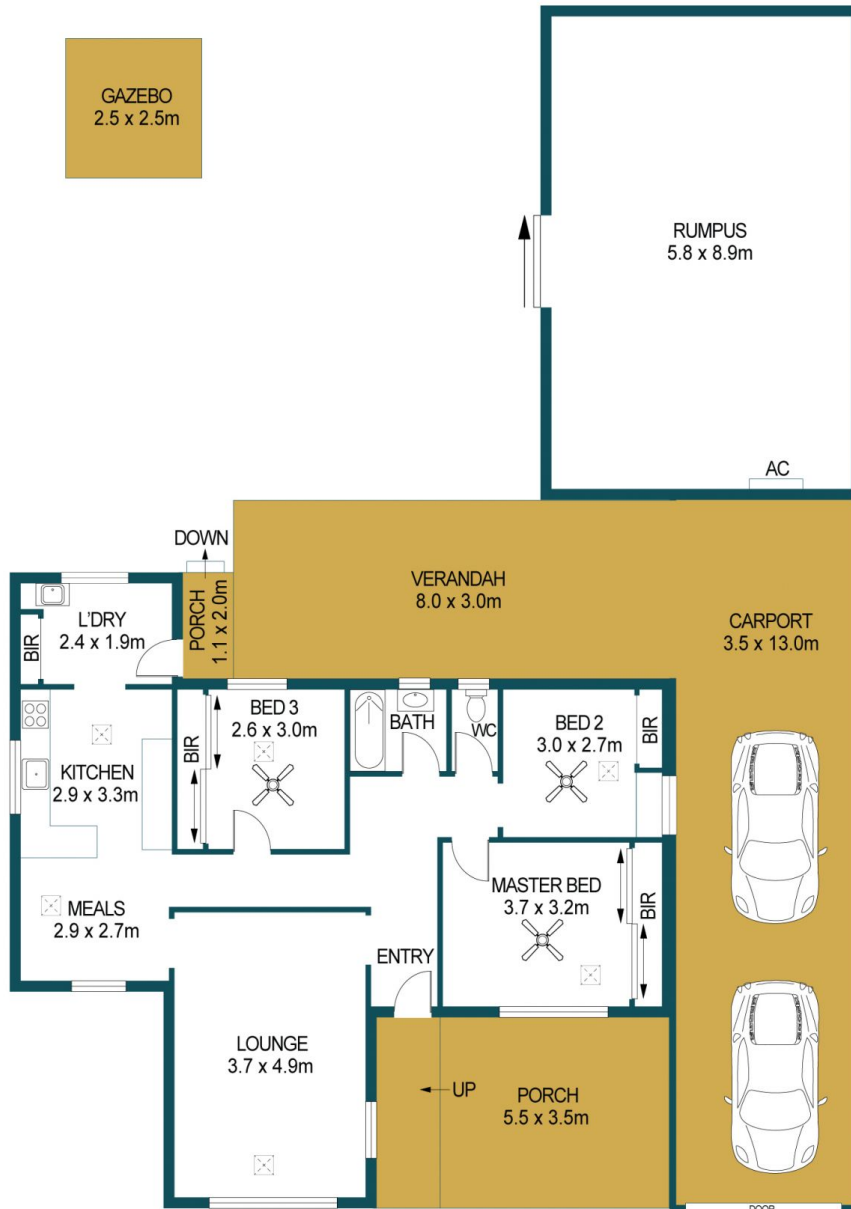
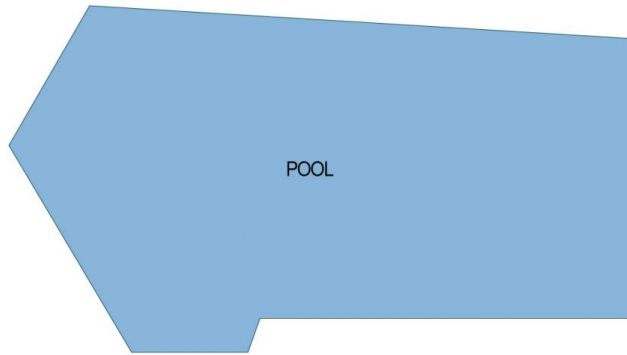
Price : \$ 375,000
Building Size : 98 sqm
Land Size : 740 sqm
View : <https://www.edgerealty.com.au/sale/sa/north-north-east-suburbs/elizabeth-downs/residential/house/6845064>



Mike Lao
0410390250



Tyson Bennett
0437161997



APPROXIMATE DIMENSIONS	
LIVING:	98.3m ²
CARPORT:	45.5m ²
GAZEBO/RUMPUS:	57.9m ²
PORCH:	21.5m ²
VERANDAH:	24.0m ²
TOTAL:	247.2m ²

10 WINKLE STREET, ELIZABETH DOWNS

DISCLAIMER

PLANS SHOWN ARE FOR MARKETING PURPOSES ONLY, ALL DIMENSIONS ARE APPROXIMATE AND NOT TO SCALE. THEY ARE SUBJECT TO ERRORS AND INACCURACIES AND NO LIABILITY WILL BE ACCEPTED. INTERESTED PARTIES SHOULD MAKE THEIR OWN ENQUIRIES.



IMAGES AND FLOORPLAN BY:
IN-HOUSE
IMAGING
inhouseimaging.com.au