



2/74-80 Sampson Road ELIZABETH GROVE SA

2 1 2

To submit an offer, please copy and paste this link into your browser: <https://airtable.com/shrBb12PXtTjyZAXm>

Mike Lao, Corey Wilkop and Edge Realty RLA256385 are proud to present to the market this exciting opportunity to enjoy comfortable and low-maintenance living in a prized pocket of Elizabeth Grove. Whether you're looking to secure your very first home, lock in a quality investment or get your hands on an idyllic downsizer in a convenient location, this charming property could be for you. Current fixed lease of \$270 per week in place until 10.10.2022 for instant returns!

Please note photography of property was taken 2019 and are being reused as the property is currently tenanted.

The single-level layout is set behind a quaint facade and

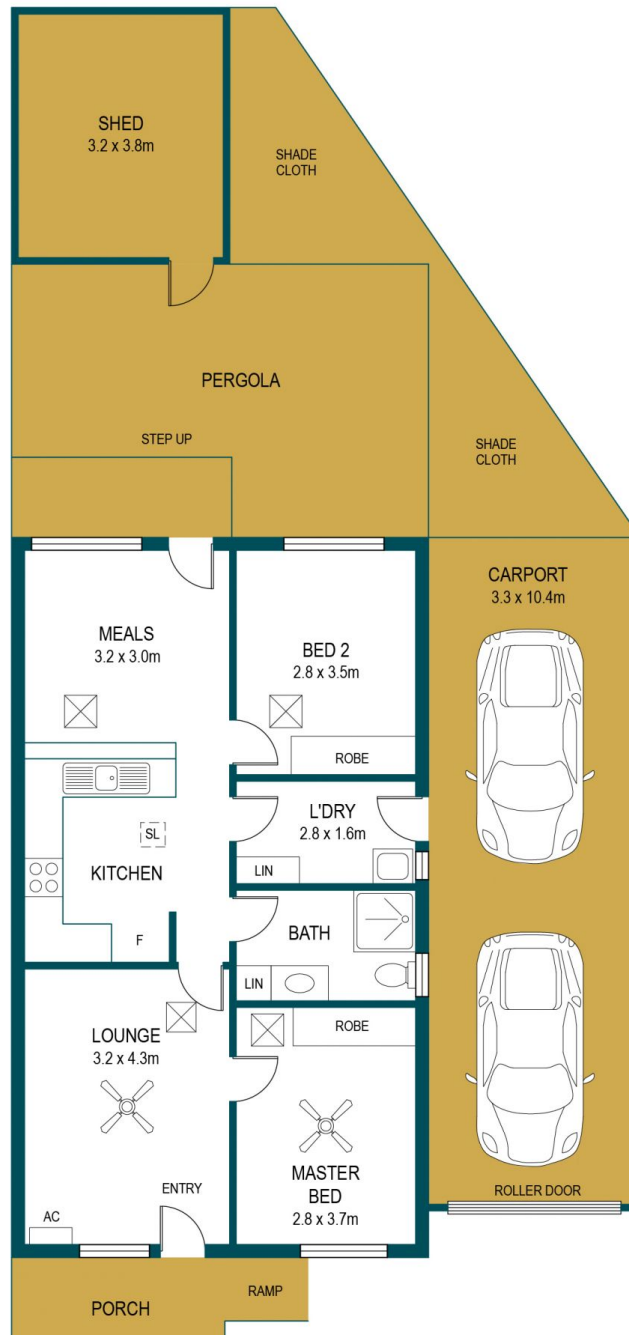
Price : \$ 220,000
Building Size : 66 sqm
Land Size : 270 sqm
View : <https://www.edgerealty.com.au/sale/sa/north-north-east-suburbs/elizabeth-grove/residential/unit/6845344>



Mike Lao
0410390250



Tyson Bennett
0437161997



APPROXIMATE DIMENSIONS

LIVING:	66.3 m ²
SHED:	14.7 m ²
PERGOLA:	27.7 m ²
CARPORT:	34.3 m ²
PORCH:	3.6 m ²
TOTAL:	146.6 m ²

2/74-80 SAMPSON ROAD, ELIZABETH GROVE

DISCLAIMER

PLANS SHOWN ARE FOR MARKETING PURPOSES ONLY. ALL DIMENSIONS ARE APPROXIMATE AND NOT TO SCALE. THEY ARE SUBJECT TO ERRORS AND INACCURACIES AND NO LIABILITY WILL BE ACCEPTED. INTERESTED PARTIES SHOULD MAKE THEIR OWN ENQUIRIES.