



38 Cambridge Terrace HILLBANK SA

3 1 1

For an in-depth look at this home, please click on the 3D tour for a virtual walk-through

Virtual Tour Link:
<https://my.matterport.com/show/?m=V7cERuGPxzR>

To submit an offer, please copy and paste this link into your browser:
<https://airtable.com/shrBb12PXtTjyZAXm>

Mike Lao, Tyson Bennett and Edge Realty RLA256385 are proud to present to the market this move-in ready picture-perfect property. A charming stone facade and low-maintenance garden welcome you home while inside, your light-filled, single-storey layout awaits.

There are three bedrooms to choose from with two offering built-in robes including the master which also boasts

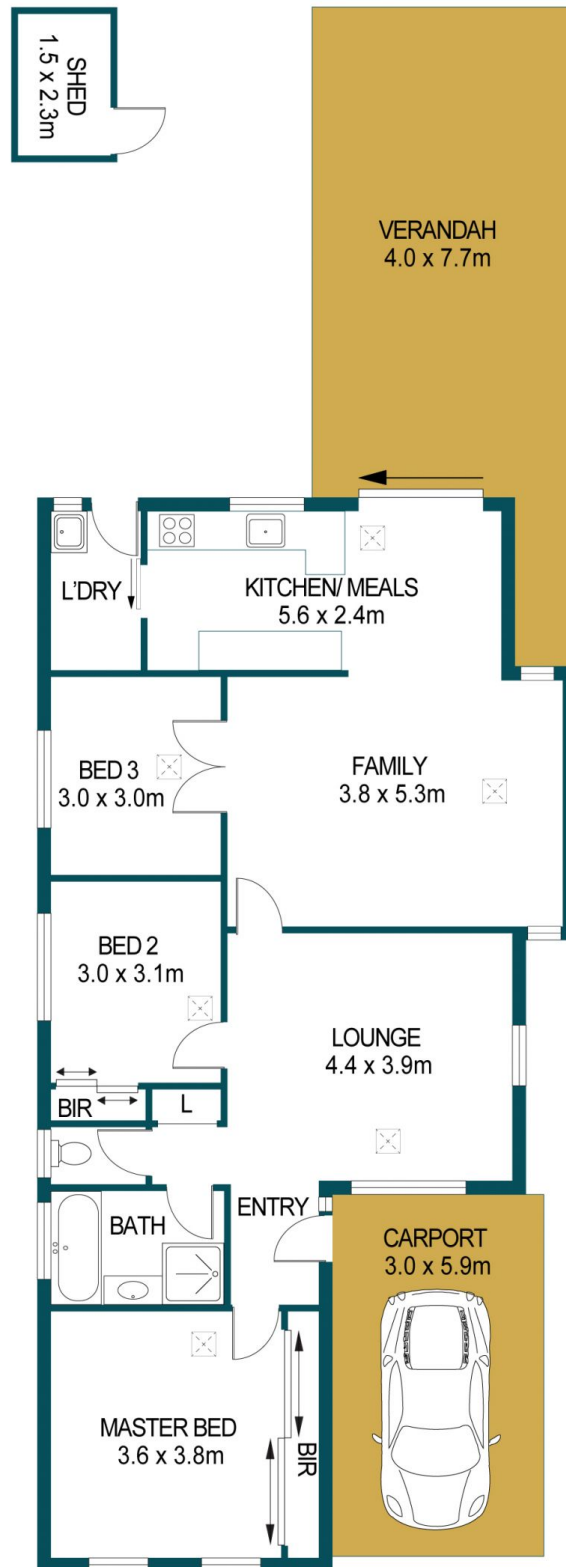
Price : \$ 421,000
Building Size : 105 sqm
Land Size : 300 sqm
View : <https://www.edgerealty.com.au/sale/sa/north-north-east-suburbs/hillbank/residential/house/6848087>



Mike Lao
0410390250



Tyson Bennett
0437161997



APPROXIMATE DIMENSIONS

LIVING:	105.2m ²
VERANDAH:	30.8m ²
SHED:	3.5m ²
CARPORT:	17.7m ²
TOTAL:	157.2m ²

38 CAMBRIDGE TERRACE, HILLBANK

DISCLAIMER

PLANS SHOWN ARE FOR MARKETING PURPOSES ONLY, ALL DIMENSIONS ARE APPROXIMATE AND NOT TO SCALE. THEY ARE SUBJECT TO ERRORS AND INACCURACIES AND NO LIABILITY WILL BE ACCEPTED. INTERESTED PARTIES SHOULD MAKE THEIR OWN ENQUIRIES.



IMAGES AND FLOORPLAN BY:
IN-HOUSE
IMAGING
inhouseimaging.com.au