



28 William Drive DAVOREN PARK SA

3 1 3

For an in-depth look at this home, please click on the 3D tour for a virtual walk-through

Virtual Tour Link:
<https://my.matterport.com/show/?m=UFpd2ADwL36>

To submit an offer, please copy and paste this link into your browser: <https://airtable.com/shrBb12PXtTjyZAXm>

Mike Lao, Tyson Bennett and Edge Realty RLA256385 are proud to present to the market a three-bedroom one-bathroom property that oozes comfort and functionality across an excellent fluid floor plan. Found on many desirable Australian homes, this property displays a dashing redbrick veneer exterior with a steel frame that punches up its curb appeal with a manicured front lawn that adds an extra level of drama.

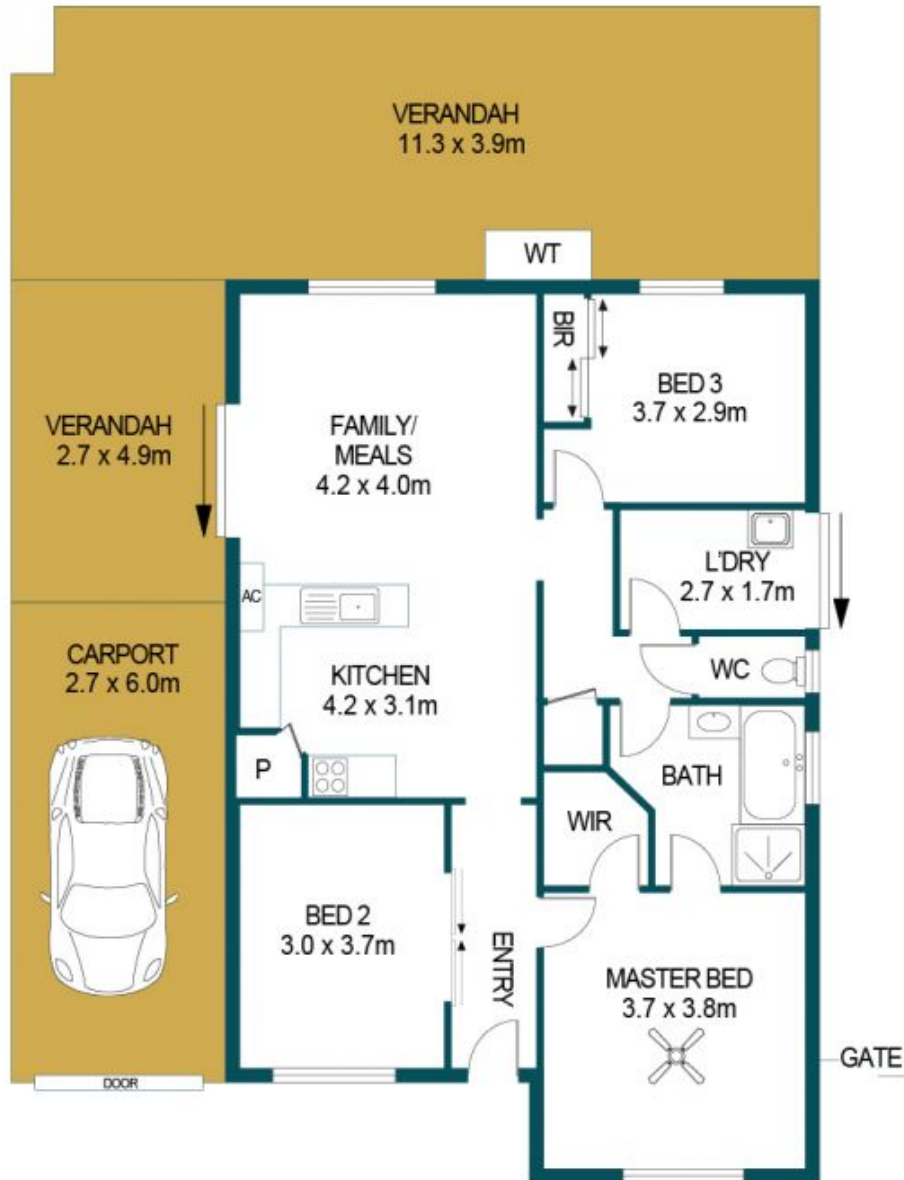
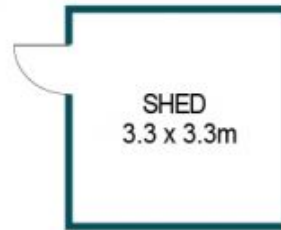
Price : \$ 360,000
Building Size : 128 sqm
Land Size : 354 sqm
View : <https://www.edgerealty.com.au/sale/sa/north-north-east-suburbs/davoren-park/residential/house/6889320>



Mike Lao
0410390250



Tyson Bennett
0437161997



APPROXIMATE DIMENSIONS

LIVING:	99.7m ²
VERANDAH:	57.3m ²
CARPORT:	16.2m ²
TOTAL:	173.2m ²

28 WILLIAM DRIVE, DAVOREN PARK

DISCLAIMER

PLANS SHOWN ARE FOR MARKETING PURPOSES ONLY, ALL DIMENSIONS ARE APPROXIMATE AND NOT TO SCALE. THEY ARE SUBJECT TO ERRORS AND INACCURACIES AND NO LIABILITY WILL BE ACCEPTED. INTERESTED PARTIES SHOULD MAKE THEIR OWN ENQUIRIES.



IMAGES AND FLOORPLAN BY:
IN-HOUSE
IMAGING
inhouseimaging.com.au