



52A Bristol Crescent DAVOREN PARK SA

3 1 1

For an in-depth look at this home, please click on the 3D tour for a virtual walk-through

Virtual Tour Link:
<https://my.matterport.com/show/?m=mQbYJw6KANR>

To submit an offer, please copy and paste this link into your browser: <https://airtable.com/shrBb12PXtTjyZAXm>

Mike Lao, Tyson Bennett and Edge Realty RLA256385 are proud to present to the market 52A Bristol Crescent, an idyllic family home that you'll be proud to call your own. A charming brick facade welcomes you to step inside this light-filled abode where three bedrooms, one bathroom and an open-plan living area allow you to kick back and relax.

A bay window draws soft natural light into the master bedroom where you are also treated to a walk-in robe, a

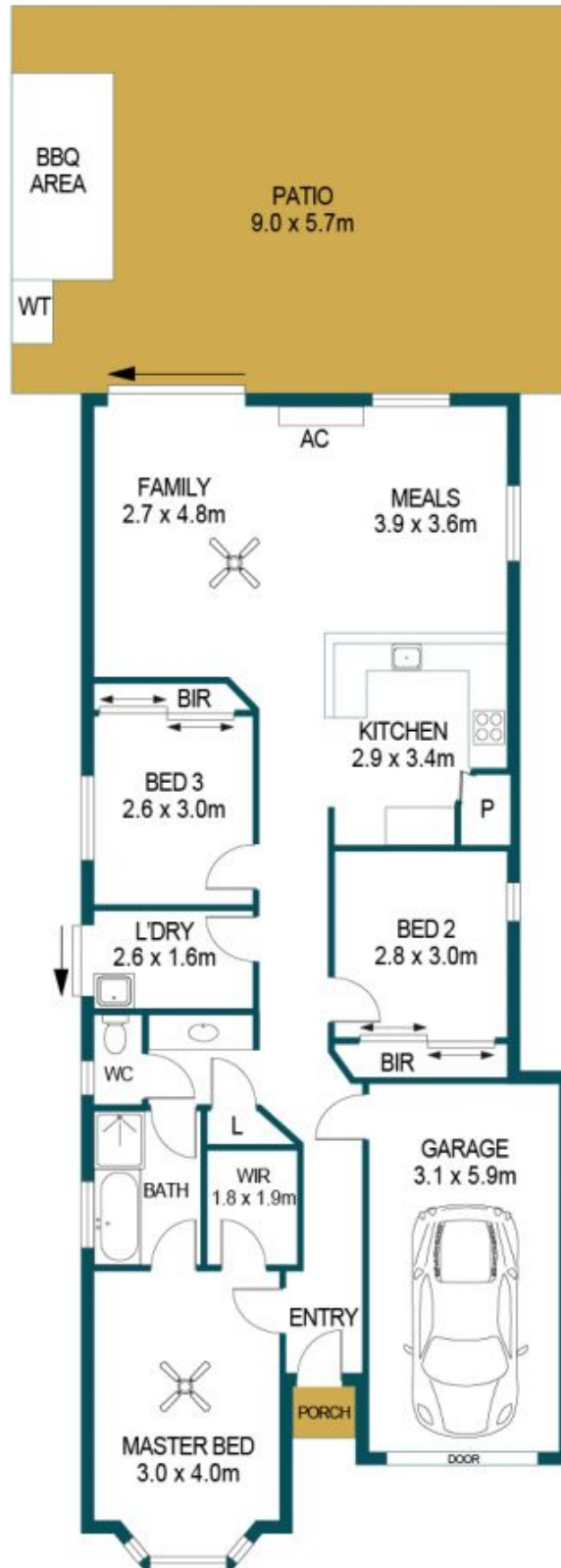
Price : \$ 350,000
Building Size : 112 sqm
Land Size : 361 sqm
View : <https://www.edgerealty.com.au/sale/sa/north-north-east-suburbs/davoren-park/residential/house/6889648>



Mike Lao
0410390250



Tyson Bennett
0437161997



APPROXIMATE DIMENSIONS

LIVING:	103.1m ²
GARAGE:	23.1m ²
PORCH:	0.8m ²
PATIO:	51.3m ²
TOTAL:	178.3m ²

52A BRISTOL CRESCENT, DAVOREN PARK

DISCLAIMER

PLANS SHOWN ARE FOR MARKETING PURPOSES ONLY, ALL DIMENSIONS ARE APPROXIMATE AND NOT TO SCALE. THEY ARE SUBJECT TO ERRORS AND INACCURACIES AND NO LIABILITY WILL BE ACCEPTED. INTERESTED PARTIES SHOULD MAKE THEIR OWN ENQUIRIES.



IMAGES AND FLOORPLAN BY:
IN-HOUSE
IMAGING
inhouseimaging.com.au