



56 Ashfield Road ELIZABETH SA

3 1 4

To submit an offer, please copy and paste this link into your browser: <https://airtable.com/shrBb12PXtTjyZAXm>

Mike Lao, Tyson Bennett and Edge Realty RLA256385 are proud to present to the market this exciting offering that's bursting with potential. Whether you have renovation dreams or development aspirations, this is simply too good to miss.

Step inside, where the existing home offers three bedrooms and one bathroom along with a host of charming features throughout. The entry opens to reveal a spacious, light-filled lounge room which will be the hub of everyday life as you gather with friends and family for a delicious dinner or unwind in front of the TV for movie night.

From the living space you can step into the dining room

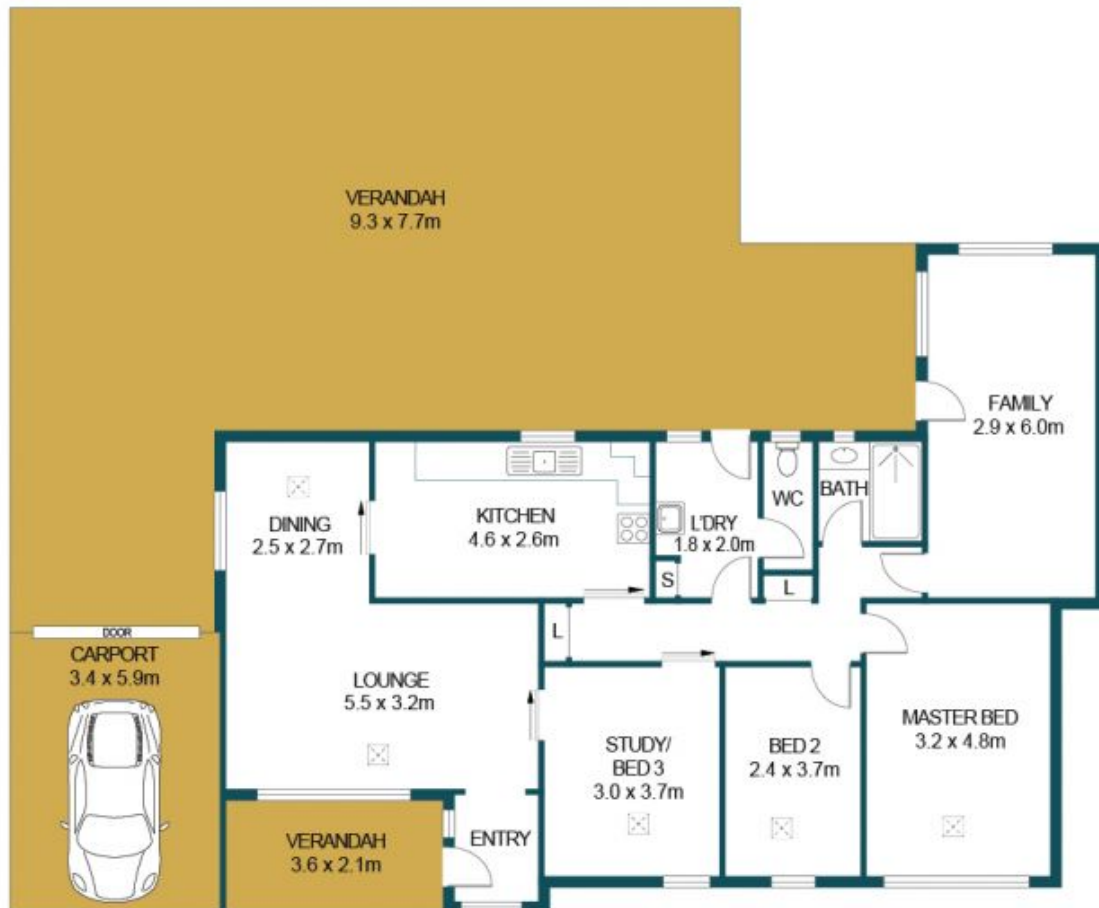
Price : \$ 325,000
Building Size : 131 sqm
Land Size : 930 sqm
View : <https://www.edgerealty.com.au/sale/sa/north-north-east-suburbs/elizabeth/residential/house/6899972>



Mike Lao
0410390250



Tyson Bennett
0437161997



APPROXIMATE DIMENSIONS

LIVING:	131.7m ²
GARAGE:	20.5m ²
SHED:	8.9m ²
CARPORT:	20.1m ²
VERANDAH:	137.2m ²
TOTAL:	318.4m ²

56 ASHFIELD ROAD, ELIZABETH

DISCLAIMER

PLANS SHOWN ARE FOR MARKETING PURPOSES ONLY, ALL DIMENSIONS ARE APPROXIMATE AND NOT TO SCALE. THEY ARE SUBJECT TO ERRORS AND INACCURACIES AND NO LIABILITY WILL BE ACCEPTED. INTERESTED PARTIES SHOULD MAKE THEIR OWN ENQUIRIES.



IMAGES AND FLOORPLAN BY:
IN-HOUSE
IMAGING
inhouseimaging.com.au