



## 1 Durrington Road ELIZABETH SA

2 1 1

To submit an offer, please copy and paste this link into your browser: <https://airtable.com/shrBb12PXtTjyZAXm>

Mike Lao, Tyson Bennett and Edge Realty RLA256385 are proud to present to the market this easy-care home standing proud on a prized corner lot. First-time buyers, young families and downsizers alike will feel drawn to the two-bedroom, one-bathroom floorplan while astute property investors won't want to miss this low-maintenance offering set within a popular location.

From the covered front porch, you are welcomed into the light-filled and open living room with enough space for everyone to kick back and relax. The free-flowing floorplan draws you through to the combined kitchen and meals area where you can show off your culinary skills, cook up a storm and entertain guests.

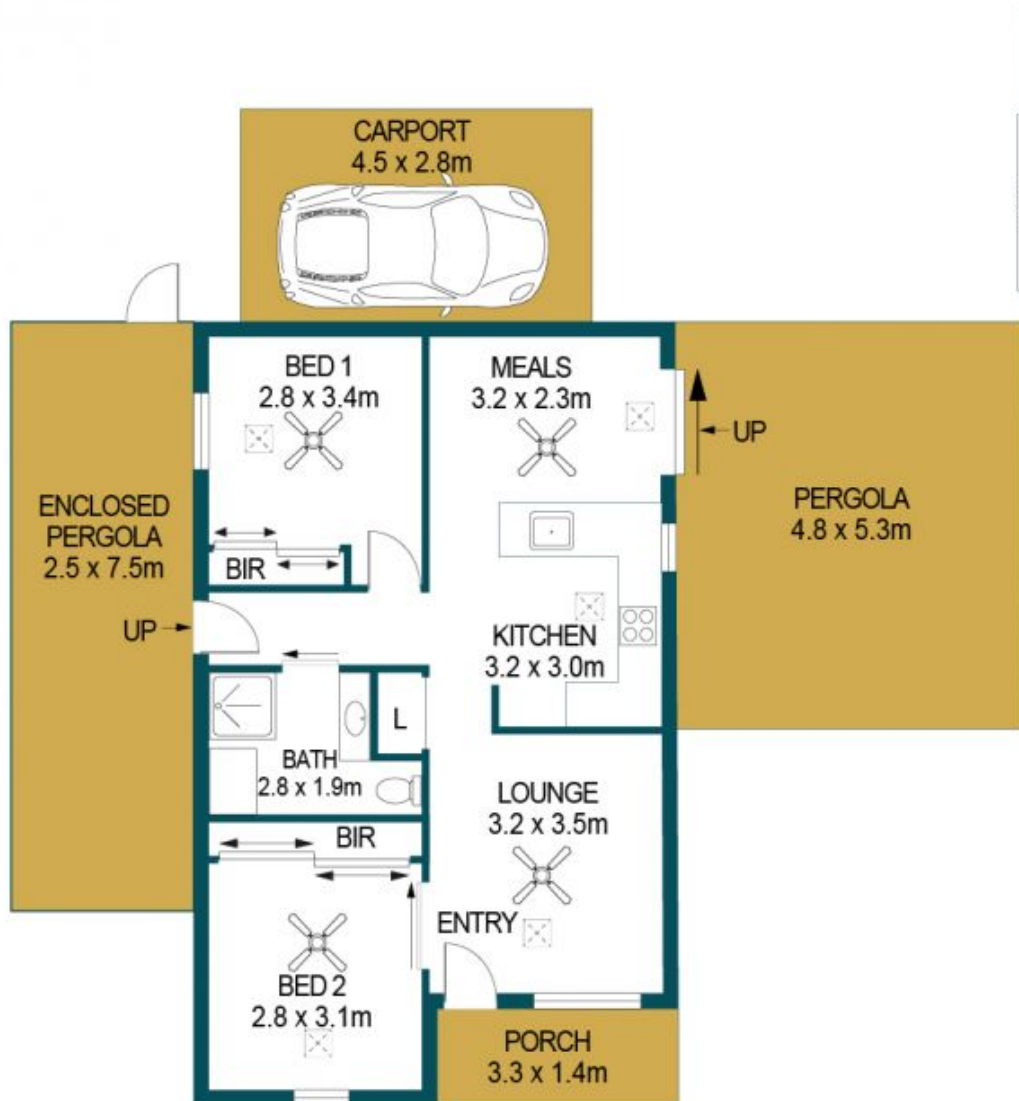
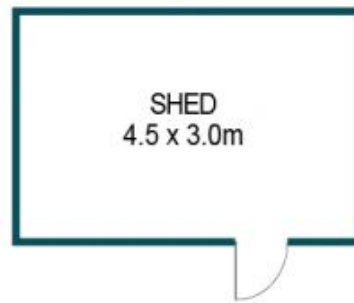
**Price** : \$ 270,000  
**Building Size** : 63 sqm  
**Land Size** : 355 sqm  
**View** : <https://www.edgerealty.com.au/sale/sa/north-north-east-suburbs/elizabeth/residential/house/6915990>



**Mike Lao**  
0410390250



**Brendon Ly**  
0447888444



APPROXIMATE DIMENSIONS

LIVING:	63.0m <sup>2</sup>
PERGOLA:	25.4m <sup>2</sup>
PORCH:	4.6m <sup>2</sup>
CARPORT:	12.6m <sup>2</sup>
SHED:	13.5m <sup>2</sup>
TOTAL:	119.1m <sup>2</sup>

# 1 DURRINGTON ROAD, ELIZABETH

DISCLAIMER

PLANS SHOWN ARE FOR MARKETING PURPOSES ONLY, ALL DIMENSIONS ARE APPROXIMATE AND NOT TO SCALE. THEY ARE SUBJECT TO ERRORS AND INACCURACIES AND NO LIABILITY WILL BE ACCEPTED. INTERESTED PARTIES SHOULD MAKE THEIR OWN ENQUIRIES.



IMAGES AND FLOORPLAN BY:  
**IN-HOUSE**  
IMAGING  
inhouseimaging.com.au