

## 17 Karrawirra Close CRAIGMORE SA

4 1 2

\*For an in-depth look at this home, please click on the 3D tour for a virtual walk-through\*

Virtual Tour Link:  
<https://my.matterport.com/show/?m=YmNWDNns7eo>

To submit an offer, please copy and paste this link into your browser: <https://airtable.com/shrBb12PXtTjyZAXm>

Mike Lao, Tyson Bennett and Edge Realty RLA256385 are proud to present to the market this character-filled family home with room for everyone to spread out and relax. Sitting proud on a generous 720sqm lot, beautiful terrace gardens welcome you home. Gorgeous original details are on show throughout from the soaring beamed ceilings to the exposed brick walls and timber beams adding instant charm and appeal to the light-filled interior.

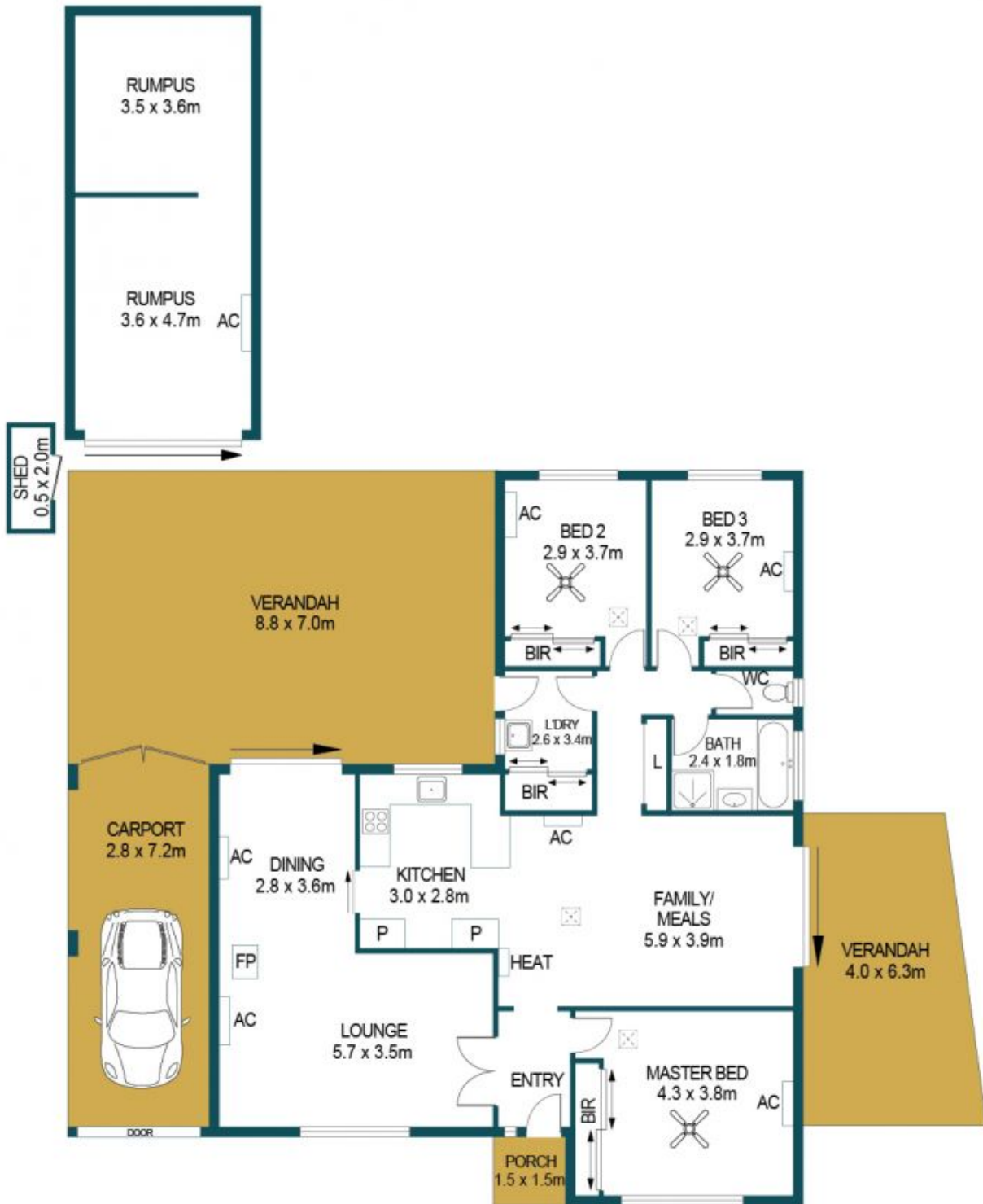
**Price** : \$ 450,000  
**Building Size** : 134 sqm  
**Land Size** : 720 sqm  
**View** : <https://www.edgerealty.com.au/sale/sa/north-north-east-suburbs/craigmore/residential/house/6916133>



**Mike Lao**  
0410390250



**Tyson Bennett**  
0437161997



APPROXIMATE DIMENSIONS

LIVING:	134.7m <sup>2</sup>
RUMPUS:	29.5m <sup>2</sup>
SHED/PORCH:	3.3m <sup>2</sup>
CARPOR:	20.2m <sup>2</sup>
VERANDAH:	83.6m <sup>2</sup>
TOTAL:	271.3m <sup>2</sup>

## 17 KARRAWIRRA CLOSE, CRAIGMORE

### DISCLAIMER

PLANS SHOWN ARE FOR MARKETING PURPOSES ONLY, ALL DIMENSIONS ARE APPROXIMATE AND NOT TO SCALE. THEY ARE SUBJECT TO ERRORS AND INACCURACIES AND NO LIABILITY WILL BE ACCEPTED. INTERESTED PARTIES SHOULD MAKE THEIR OWN ENQUIRIES.



IMAGES AND FLOORPLAN BY:  
**IN-HOUSE**  
IMAGING  
inhouseimaging.com.au