



20 Toolunga Court ELIZABETH PARK SA

3 1 1

To submit an offer, please copy and paste this link into your browser: <https://airtable.com/shrBb12PXtTjyZAXm>

Mike Lao, Tyson Bennett and Edge Realty RLA256385 are proud to present to the market this low-maintenance unit ready to be snapped up by the savvy investor. There is currently a fixed lease of \$300 per week in place until 26.02.2023 making this the perfect set-and-forget addition to your investment portfolio.

The layout features three bedrooms set within their own wing of the house all with easy access to the main bathroom with a bath and separate toilet. When it's time to relax, there is a bright front lounge room with easy-care tile flooring, beautiful bay window and ample room for everyone to spread out.

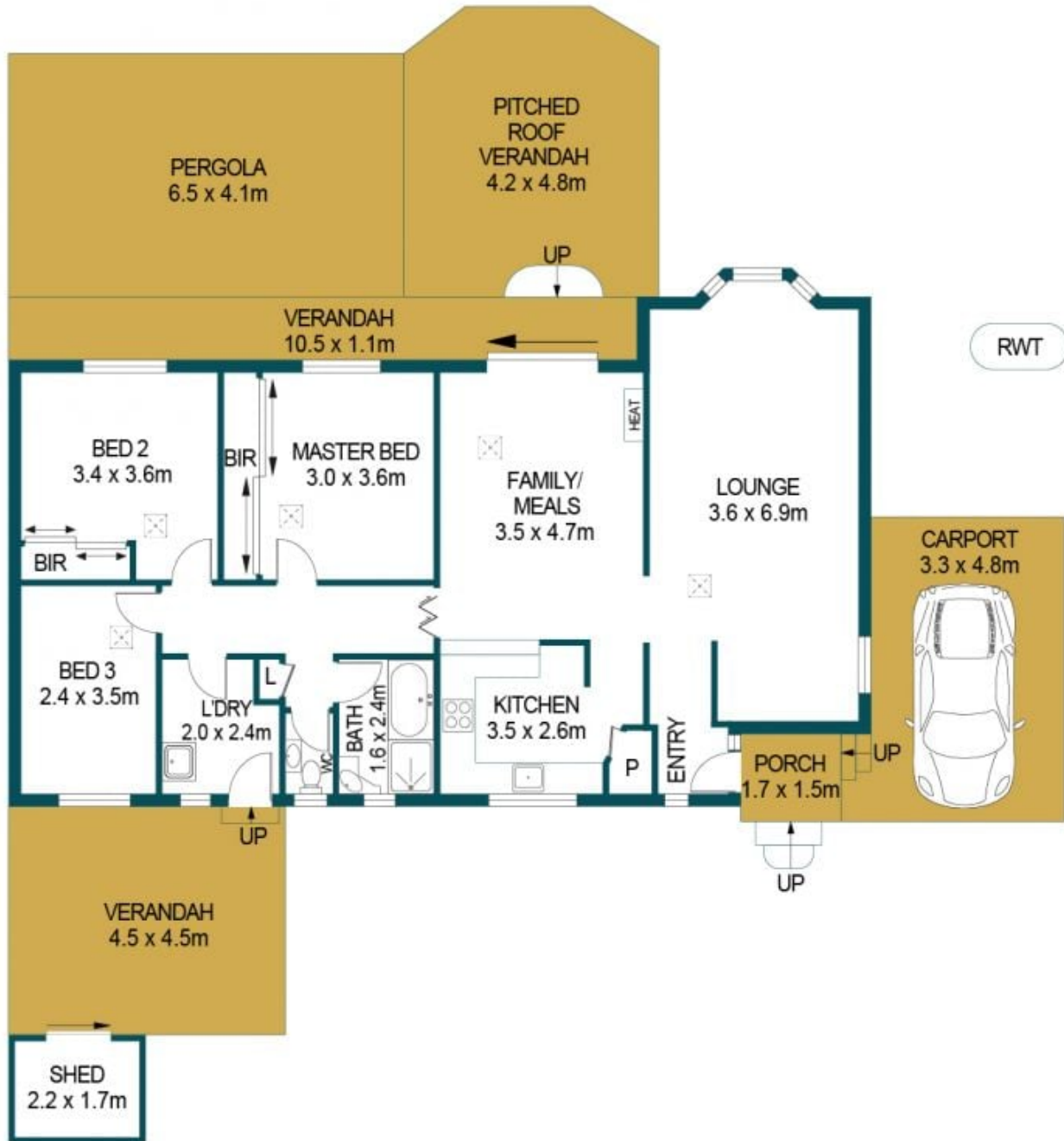
Price : \$ 341,000
Building Size : 102 sqm
Land Size : 519 sqm
View : <https://www.edgerealty.com.au/sale/sa/north-north-east-suburbs/elizabeth-park/residential/house/6935077>



Mike Lao
0410390250



Tyson Bennett
0437161997



APPROXIMATE DIMENSIONS	
LIVING:	102.9m ²
CARPORT:	15.8m ²
PORCH:	2.5m ²
VERANDAH:	52.5m ²
SHED:	3.7m ²
PERGOLA:	26.6m ²
TOTAL:	204.0m ²

20 TOOLUNGA COURT, ELIZABETH PARK

DISCLAIMER

PLANS SHOWN ARE FOR MARKETING PURPOSES ONLY. ALL DIMENSIONS ARE APPROXIMATE AND NOT TO SCALE. THEY ARE SUBJECT TO ERRORS AND INACCURACIES AND NO LIABILITY WILL BE ACCEPTED. INTERESTED PARTIES SHOULD MAKE THEIR OWN ENQUIRIES.



IMAGES AND FLOORPLAN BY:
IN-HOUSE
IMAGING
inhouseimaging.com.au