



2 Liverpool Place ELIZABETH PARK SA

3 1 2

To submit an offer, please copy and paste this link into your browser: <https://airtable.com/shrBb12PXtTjyZAXm>

Mike Lao, Tyson Bennett and Edge Realty RLA256385 are proud to present to the market a double level brick masterpiece that is waiting to treat its next owners to amazing space and comfort with a touch of contemporary charm. This home is excellently located on a desirable corner lot within a secure gated community, offering added security and peace of mind.

The lower level boasts an inviting open-concept floor plan dedicated to the main living areas with attractive wood-look linoleum flooring, as well as split system air conditioning that ensures central comfort. As soon as you step inside the front porch entryway, the spacious family room will welcome you and usher you to the dining space and the

Price : \$ 375,000
Building Size : 122 sqm
Land Size : 313 sqm
View : <https://www.edgerealty.com.au/sale/sa/north-north-east-suburbs/elizabeth-park/residential/townhouse/6935120>



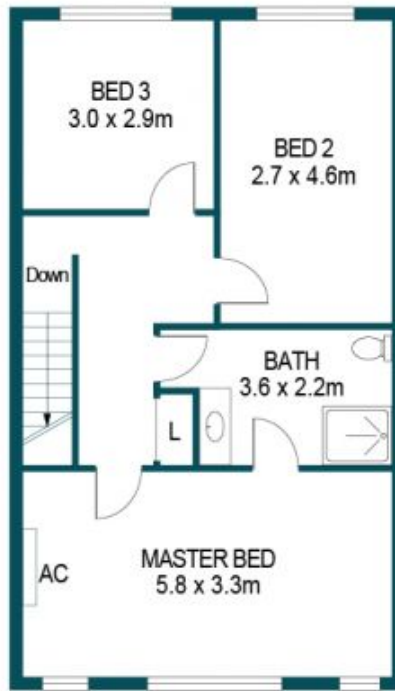
Mike Lao
0410390250



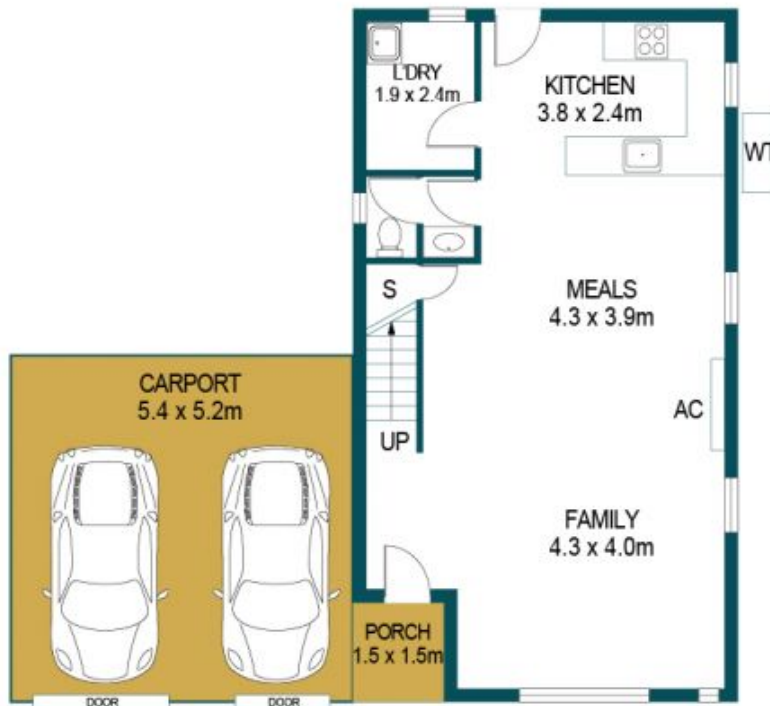
Tyson Bennett
0437161997



FIRST FLOOR



GROUND FLOOR



APPROXIMATE DIMENSIONS

LIVING:	122.5m ²
CARPORT:	28.1m ²
PORCH:	2.3m ²
TOTAL:	152.9m ²

2 LIVERPOOL PLACE, ELIZABETH PARK

DISCLAIMER

PLANS SHOWN ARE FOR MARKETING PURPOSES ONLY. ALL DIMENSIONS ARE APPROXIMATE AND NOT TO SCALE. THEY ARE SUBJECT TO ERRORS AND INACCURACIES AND NO LIABILITY WILL BE ACCEPTED. INTERESTED PARTIES SHOULD MAKE THEIR OWN ENQUIRIES.



IMAGES AND FLOORPLAN BY:
IN-HOUSE
IMAGING
inhouseimaging.com.au