

25A Tangent Avenue SALISBURY NORTH SA

3 1 1

For an in-depth look at this home, please click on the 3D tour for a virtual walk-through

Virtual Tour Link:
<https://my.matterport.com/show/?m=cbXX33LepKo>

To submit an offer, please copy and paste this link into your browser: <https://airtable.com/shrBb12PXtTjyZAXm>

Mike Lao, Brendon Ly and Edge Realty RLA256385 are proud to present to the market this move-in-ready family home in Salisbury North. The interior of this light-filled abode is sleek and stylish with a contemporary appeal that will instantly put you at ease.

From the entry, you are welcomed into the open lounge room with glossy tiles and a free-flowing design that draws you into the dining area and kitchen. A stainless steel Linea

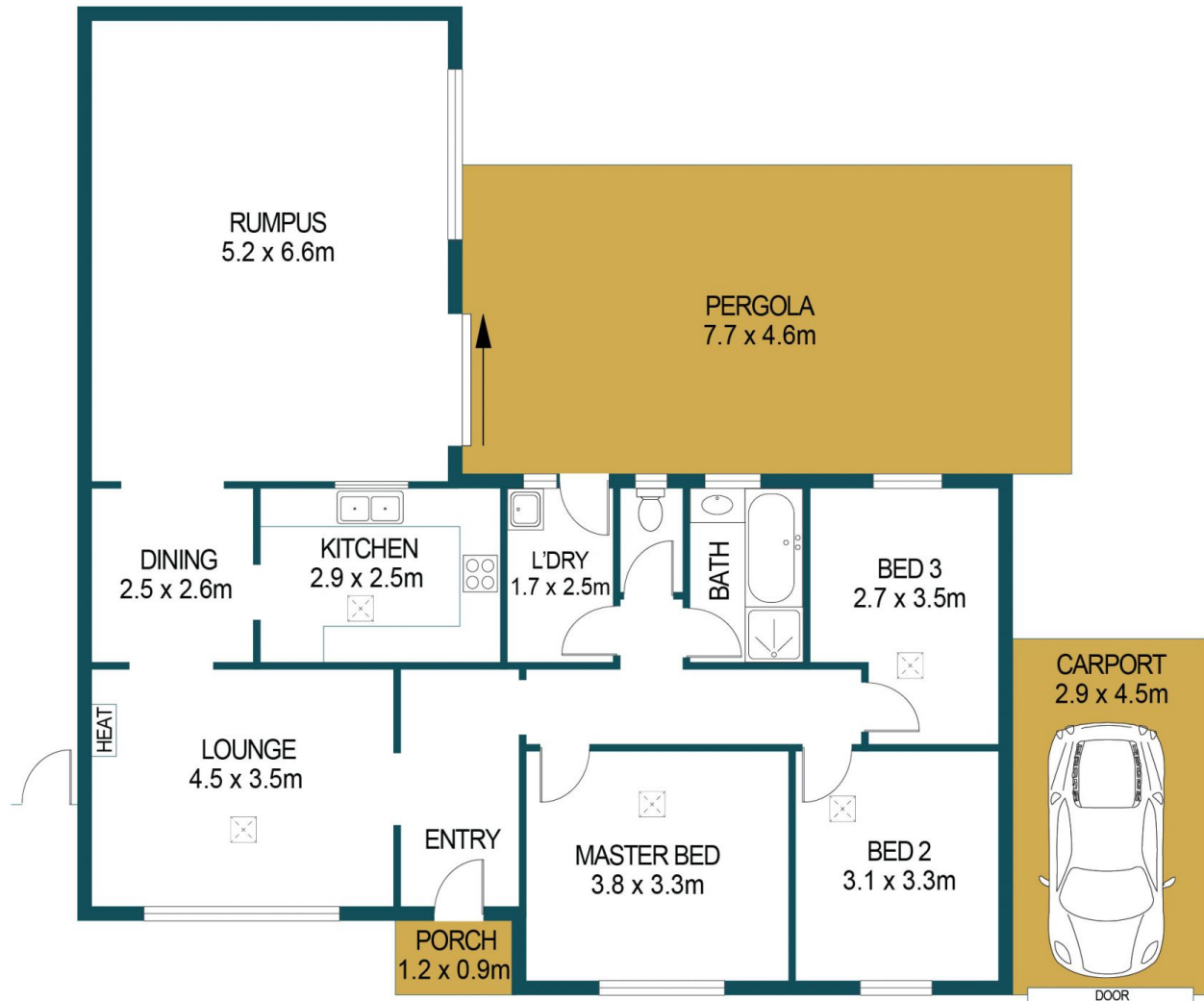
Price : \$ 380,000
Building Size : 128 sqm
Land Size : 471 sqm
View : <https://www.edgerealty.com.au/sale/sa/north-north-east-suburbs/salisbury-north/residential/house/6961890>



Mike Lao
0410390250



Brendon Ly
0447888444



APPROXIMATE DIMENSIONS	
LIVING:	128.5m ²
CARPORT:	13.1m ²
PERGOLA:	35.4m ²
PORCH:	1.1m ²
TOTAL:	178.1m ²

25A TANGENT AVENUE, SALISBURY NORTH

DISCLAIMER

PLANS SHOWN ARE FOR MARKETING PURPOSES ONLY, ALL DIMENSIONS ARE APPROXIMATE AND NOT TO SCALE. THEY ARE SUBJECT TO ERRORS AND INACCURACIES AND NO LIABILITY WILL BE ACCEPTED. INTERESTED PARTIES SHOULD MAKE THEIR OWN ENQUIRIES.



IMAGES AND FLOORPLAN BY:
IN-HOUSE
IMAGING
inhouseimaging.com.au