



3 Beaminster Road ELIZABETH PARK SA

3 1 3

To submit an offer, please copy and paste this link into your browser: <https://airtable.com/shrBb12PXtTjyZAXm>

Mike Lao, Brendon Ly and Edge Realty RLA256385 are proud to present to the market 3 Beaminster Road, a place you will be proud to call your own. This charming home offers several updates throughout along with the potential to modernise further and add your own personal style.

The property is currently tenanted with a periodic lease of \$280 per week in place with an increase to \$300 per week set for June 2022.

Daily life will revolve around the open-plan kitchen, meals and lounge room with split system air-conditioning, gorgeous timber floors and plenty of soft natural light. Whether you're relaxing with the family and catching up on

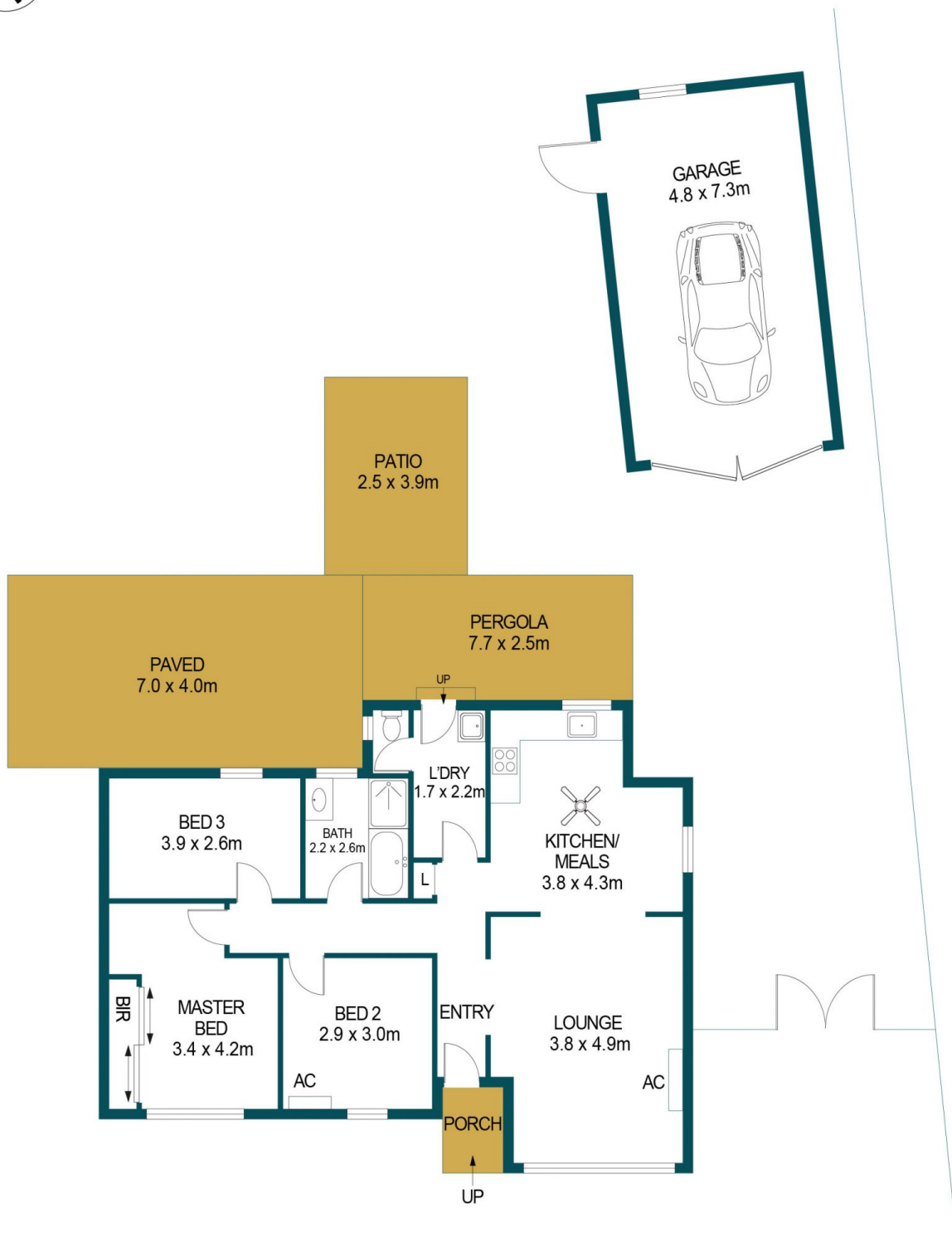
Price : \$ 360,000
Building Size : 92 sqm
Land Size : 700 sqm
View : <https://www.edgerealty.com.au/sale/sa/north-north-east-suburbs/elizabeth-park/residential/house/6969007>



Mike Lao
0410390250



Brendon Ly
0447888444



APPROXIMATE DIMENSIONS

LIVING:	92.0m ²
PORCH:	2.2m ²
PERGOLA:	19.3m ²
PATIO:	9.8m ²
PAVED:	32.0m ²
GARAGE:	35.0m ²
TOTAL:	190.3m ²

3 BEAMISTER ROAD, ELIZABETH PARK

DISCLAIMER

PLANS SHOWN ARE FOR MARKETING PURPOSES ONLY, ALL DIMENSIONS ARE APPROXIMATE AND NOT TO SCALE. THEY ARE SUBJECT TO ERRORS AND INACCURACIES AND NO LIABILITY WILL BE ACCEPTED. INTERESTED PARTIES SHOULD MAKE THEIR OWN ENQUIRIES.



IMAGES AND FLOORPLAN BY:
IN-HOUSE
IMAGING
inhouseimaging.com.au