

20 Otway Crescent MAWSON LAKES SA

3 2 1

For an in-depth look at this home, please click on the 3D tour for a virtual walk-through or copy and paste this link into your browser

Virtual <https://my.matterport.com/show/?m=SPUvJ8gqg25> Tour Link:

To submit an offer, please copy and paste this link into your browser: <https://airtable.com/shrBb12PXtTjyZAXm>

Mike Lao, Brendon Ly and Edge Realty RLA256385 are proud to present to the market this fantastic modern abode. Situated in a quiet residential neighbourhood, you'll enjoy the peace and quiet and a great community, making this an ideal property for young families looking for the right place to call home.

This house is all about giving you that low maintenance,

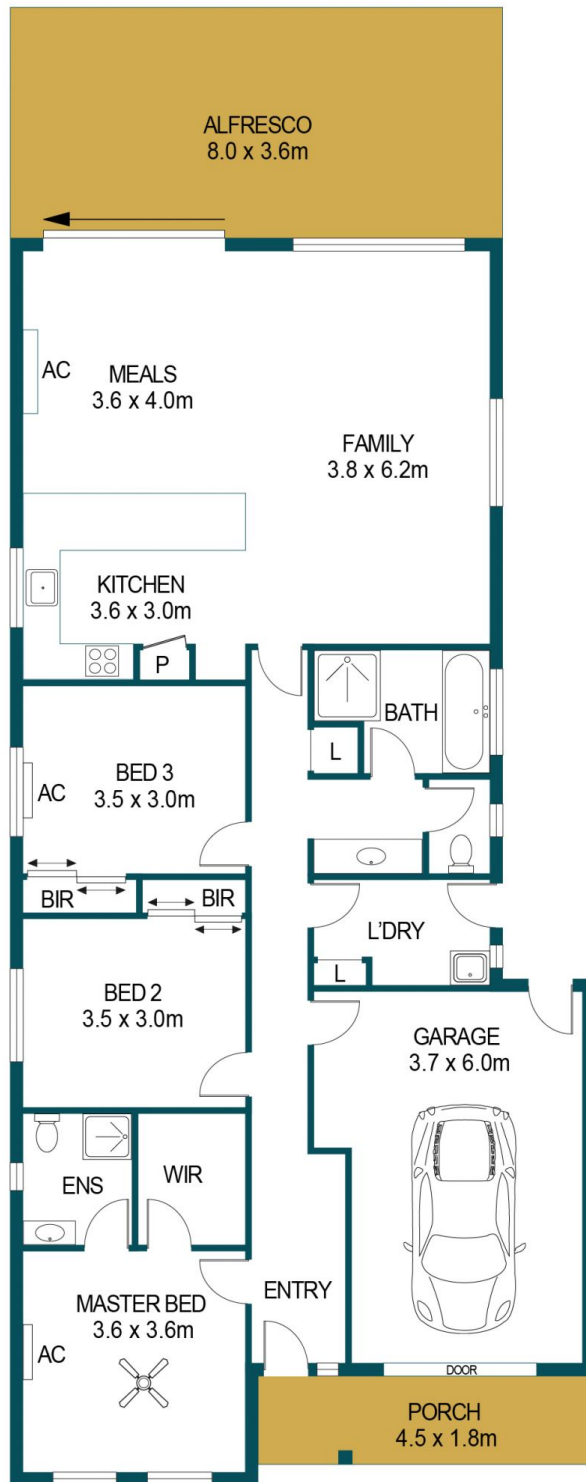
Price : \$ 600,000
Building Size : 131 sqm
Land Size : 300 sqm
View : <https://www.edgerealty.com.au/sale/sa/north-north-east-suburbs/mawson-lakes/residential/house/6982596>



Mike Lao
0410390250



Brendon Ly
0447888444



APPROXIMATE DIMENSIONS

LIVING:	131.9m ²
GARAGE:	22.2m ²
PORCH:	8.1m ²
PERGOLA:	28.8m ²
TOTAL:	191.0m ²

20 OTWAY CRESCENT, MAWSON LAKES

DISCLAIMER

PLANS SHOWN ARE FOR MARKETING PURPOSES ONLY, ALL DIMENSIONS ARE APPROXIMATE AND NOT TO SCALE. THEY ARE SUBJECT TO ERRORS AND INACCURACIES AND NO LIABILITY WILL BE ACCEPTED. INTERESTED PARTIES SHOULD MAKE THEIR OWN ENQUIRIES.



IMAGES AND FLOORPLAN BY:
IN-HOUSE
IMAGING
inhouseimaging.com.au