



5 Kathleen Crescent VIRGINIA SA

3 2 2

For an in-depth look at this home, please click on the 3D tour for a virtual walk-through or copy and paste this link into your browser

Virtual <https://my.matterport.com/show/?m=6C7VE5XxwTq> Tour Link:

To submit an offer, please copy and paste this link into your browser: <https://airtable.com/shrBb12PXtTjyZAXm>

Mike Lao, Brendon Ly and Edge Realty RLA256385 are proud to present to the market a stylish modern haven that's ready for you to move in and relax. Families craving contemporary comfort, convenience and charm will adore this gorgeous three-bedroom, two-bathroom home complete with multiple living areas and a long list of must-have features that will leave you in awe.

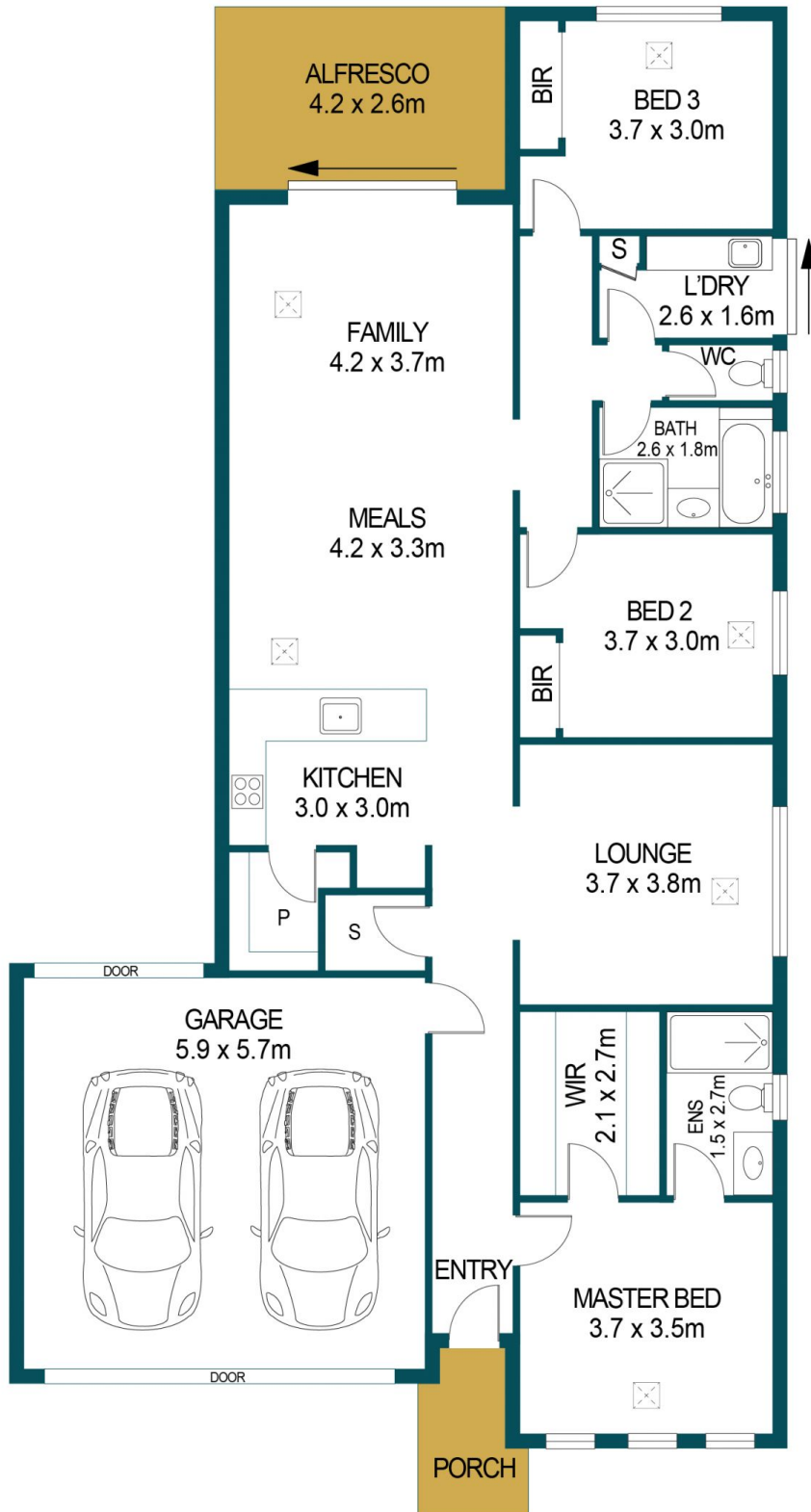
Price : \$ 517,300
Building Size : 128 sqm
Land Size : 413 sqm
View : <https://www.edgerealty.com.au/sale/sa/north-north-east-suburbs/virginia/residential/house/6982968>



Mike Lao
0410390250



Brendon Ly
0447888444



APPROXIMATE DIMENSIONS	
LIVING:	128.5m ²
PORCH:	2.2m ²
GARAGE:	33.6m ²
ALFRESCO:	10.9m ²
TOTAL:	175.2m ²

5 KATHLEEN CRESCENT, VIRGINIA

DISCLAIMER

PLANS SHOWN ARE FOR MARKETING PURPOSES ONLY, ALL DIMENSIONS ARE APPROXIMATE AND NOT TO SCALE. THEY ARE SUBJECT TO ERRORS AND INACCURACIES AND NO LIABILITY WILL BE ACCEPTED. INTERESTED PARTIES SHOULD MAKE THEIR OWN ENQUIRIES.



IMAGES AND FLOORPLAN BY:
IN-HOUSE
IMAGING
inhouseimaging.com.au