



## 6 Wesley Road EVANSTON GARDENS SA

4 2 2

\*For an in-depth look at this home, please click on the 3D tour for a virtual walk-through or copy and paste this link into your browser\*

Virtual Tour Link:  
<https://my.matterport.com/show/?m=PZebwfrsNjF>

To submit an offer, please copy and paste this link into your browser:  
<https://www.edgerealty.com.au/buying/make-an-offer/>

Mike Lao, Tyson Bennett and Edge Realty RLA256385 are proud to present to the market 6 Wesley Road, a flawless 2016-built Hickinbotham home with well-presented living inside and out, beautifully set in quiet and friendly Evanston Gardens.

Step inside beyond the pristine brick exterior to discover a

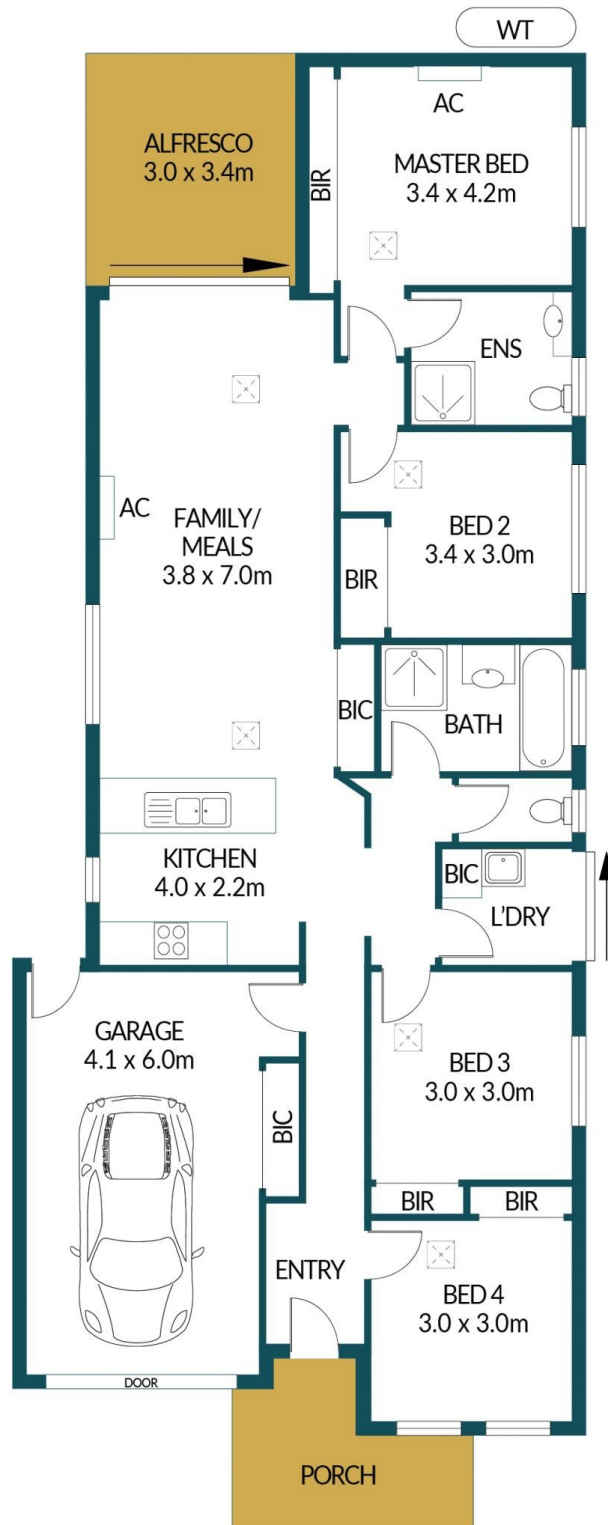
**Price** : \$ 440,000  
**Building Size** : 113 sqm  
**Land Size** : 315 sqm  
**View** : <https://www.edgerealty.com.au/sale/sa/north-north-east-suburbs/evanston-gardens/residential/house/7218082>



**Mike Lao**  
0410390250



**Tyson Bennett**  
0437161997



## 6 WESLEY ROAD, EVANSTON GARDENS

### Disclaimer

Plans shown are for marketing purposes only. All dimensions are approximate and not to scale. They are subject to errors and inaccuracies and no liability will be accepted. Interested parties should make their own enquiries. Inclusions and exclusions must be confirmed in the Residential Contract.

### APPROXIMATE DIMENSIONS

LIVING:	113.4m <sup>2</sup>
GARAGE:	24.6m <sup>2</sup>
PORCH:	6.8m <sup>2</sup>
OUTDOOR:	10.2m <sup>2</sup>
TOTAL:	155.0m <sup>2</sup>