



16 Park Lake Drive WYNN VALE SA

3 1 2

For an in-depth look at this home, please click on the 3D tour for a virtual walk-through or copy and paste this link into your browser

Virtual Tour Link:
<https://my.matterport.com/show/?m=4qjN3gaVgT6>

To submit an offer, please copy and paste this link into your browser:
<https://www.edgerealty.com.au/buying/make-an-offer/>

Mike Lao, Brendon Ly and Edge Realty RLA256385 are proud to present to the market this bright and spacious immaculately well kept family home you'll be proud to call your own. Perfectly positioned for convenience, this is your chance to truly have it all whether you're on the hunt for your first abode, a forever home or a savvy investment opportunity.

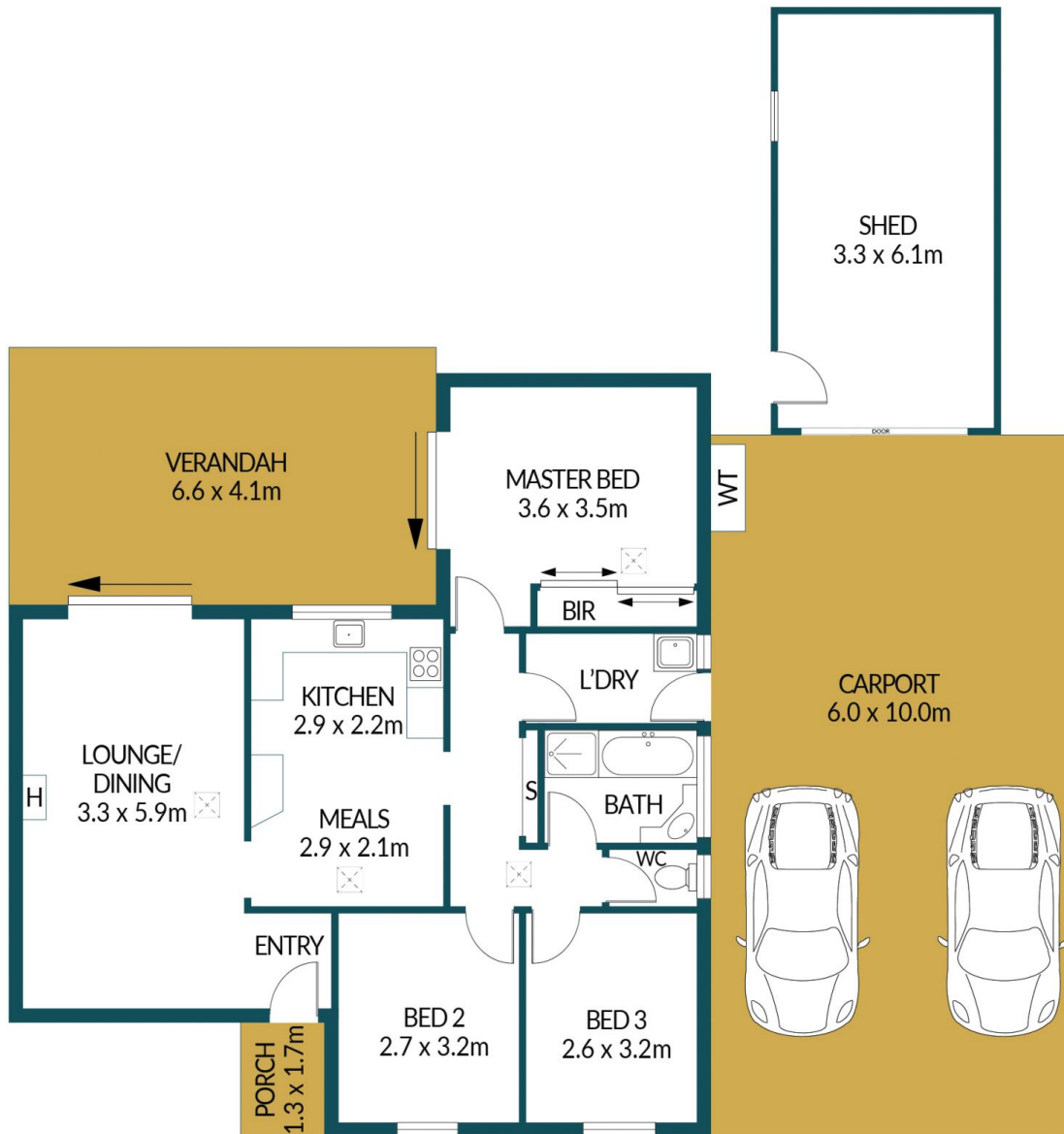
Price : \$ 486,000
Building Size : 83 sqm
Land Size : 610 sqm
View : <https://www.edgerealty.com.au/sale/sa/north-north-east-suburbs/wynn-vale/residential/house/7410075>



Mike Lao
0410390250



Brendon Ly
0447888444



16 PARK LAKE DRIVE, WYNN VALE

Disclaimer

Plans shown are for marketing purposes only. All dimensions are approximate and not to scale. They are subject to errors and inaccuracies and no liability will be accepted. Interested parties should make their own enquiries. Inclusions and exclusions must be confirmed in the Residential Contract.

APPROXIMATE DIMENSIONS

LIVING:	83.3m ²
CARPORT:	60.0m ²
VERANDAH:	27.1m ²
PORCH/SHED:	22.3m ²
TOTAL:	192.7m ²