



6 Tina Court ELIZABETH PARK SA

3 1 1

For an in-depth look at this home, please click on the 3D tour for a virtual walk-through or copy and paste this link into your browser

Virtual Tour Link:
<https://my.matterport.com/show/?m=4pAQMHywFT>

To submit an offer, please copy and paste this link into your browser:
<https://www.edgerealty.com.au/buying/make-an-offer/>

Mike Lao, Tyson Bennett and Edge Realty RLA256385 are proud to present to the market this easy-care three-bedroom home that is sure to impress a wide range of property buyers. Nestled down a quiet street, within a family-friendly gated estate, this wonderful property offers a life of comfort, convenience and ease to those who are lucky enough to call it home. The property is currently

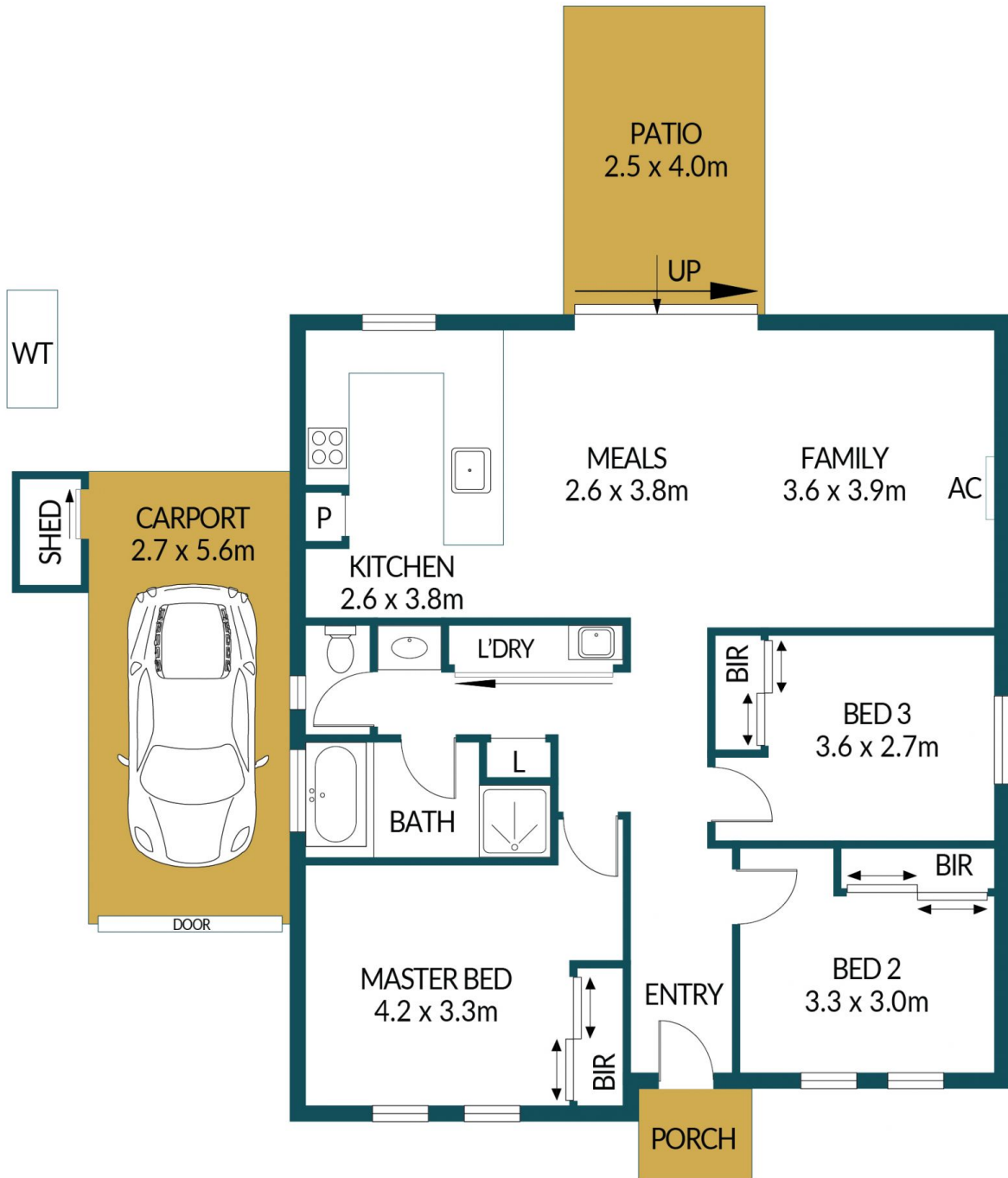
Price : \$ 395,000
Building Size : 93 sqm
Land Size : 288 sqm
View : <https://www.edgerealty.com.au/sale/sa/north-north-east-suburbs/elizabeth-park/residential/house/7464553>



Mike Lao
0410390250



Tyson Bennett
0437161997



6 TINA COURT, ELIZABETH PARK

Disclaimer

Plans shown are for marketing purposes only. All dimensions are approximate and not to scale. They are subject to errors and inaccuracies and no liability will be accepted. Interested parties should make their own enquiries. Inclusions and exclusions must be confirmed in the Residential Contract.

APPROXIMATE DIMENSIONS

LIVING:	93.5m ²
CARPORT:	15.1m ²
PORCH/SHED:	3.3m ²
PATIO:	10.0m ²
TOTAL:	121.9m ²