



## 1 Parkview Walk ELIZABETH PARK SA

3 2 1

\*For an in-depth look at this home, please click on the 3D tour for a virtual walk-through or copy and paste this link into your browser\*

Virtual <https://my.matterport.com/show/?m=ru6YLFBCkM2> Tour Link:

To submit an offer, please copy and paste this link into your browser:  
<https://www.edgerealty.com.au/buying/make-an-offer/>

Mike Lao, Tyson Bennett and Edge Realty RLA256385 are proud to present to the market 1 Parkview Walk, where well-planned space, a sought-after suburban setting and gorgeous presentation come harmoniously together to create a perfect contemporary home. The property is currently tenanted with a fixed lease of \$325 per week until 25/03/2023.

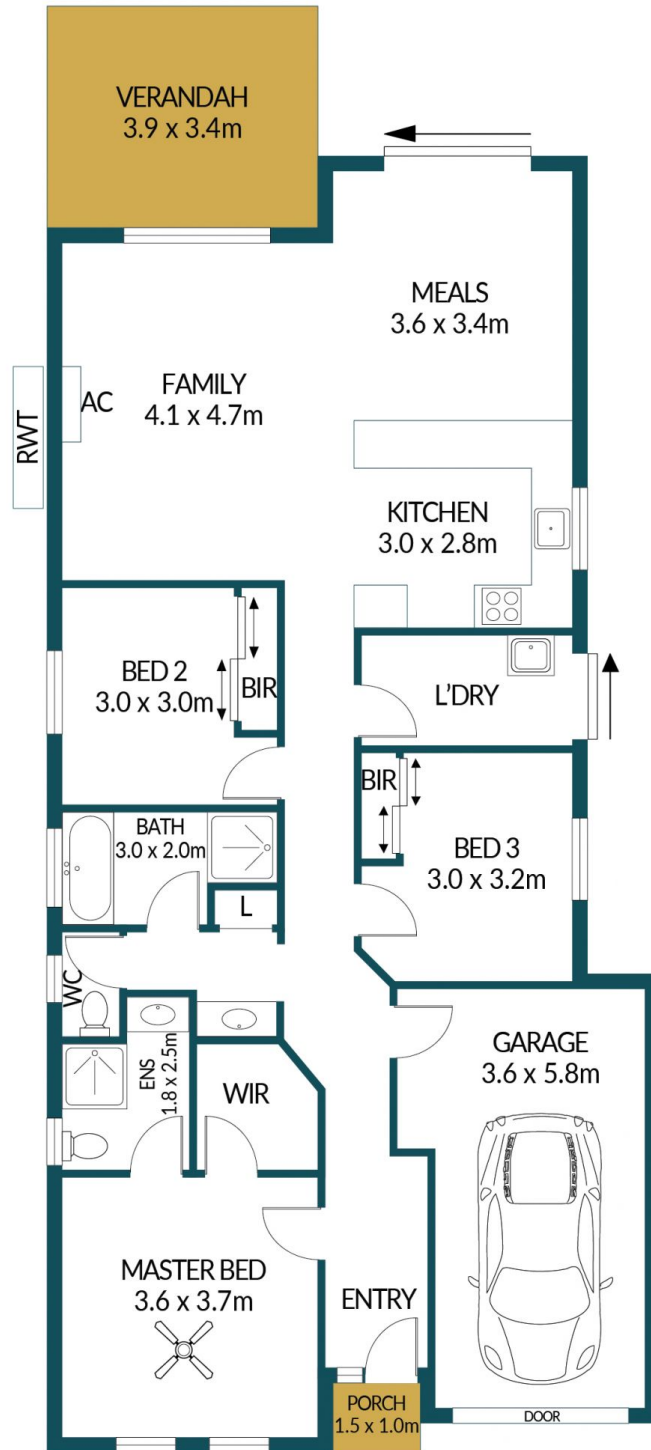
**Price** : \$ 425,000  
**Building Size** : 105 sqm  
**Land Size** : 344 sqm  
**View** : <https://www.edgerealty.com.au/sale/sa/north-north-east-suburbs/elizabeth-park/residential/house/7464578>



**Mike Lao**  
0410390250



**Tyson Bennett**  
0437161997



## 1 PARKVIEW WALK, ELIZABETH PARK

### Disclaimer

Plans shown are for marketing purposes only. All dimensions are approximate and not to scale. They are subject to errors and inaccuracies and no liability will be accepted. Interested parties should make their own enquiries. Inclusions and exclusions must be confirmed in the Residential Contract.

### APPROXIMATE DIMENSIONS

LIVING:	105.5m <sup>2</sup>
PORCH:	1.5m <sup>2</sup>
GARAGE:	20.8m <sup>2</sup>
VERANDAH:	13.4m <sup>2</sup>
TOTAL:	141.2m <sup>2</sup>