



27 Terrigal Drive SALISBURY PARK SA

4 2 3

For an in-depth look at this home, please click on the 3D tour for a virtual walk-through or copy and paste this link into your browser

Virtual Tour Link:
<https://my.matterport.com/show/?m=sUgotcviZjJ>

To submit an offer, please copy and paste this link into your browser:
<https://www.edgerealty.com.au/buying/make-an-offer/>

Mike Lao, Tyson Bennett and Edge Realty RLA256385 are proud to present to the market this spacious double-storey family home, where luxury living is within effortless reach. With four bedrooms and multiple living areas, there is ample room for the whole family to unwind, socialise and bask in the joys of daily life. The backyard highlights a beautiful in-ground salt chlorinated pool, creating the

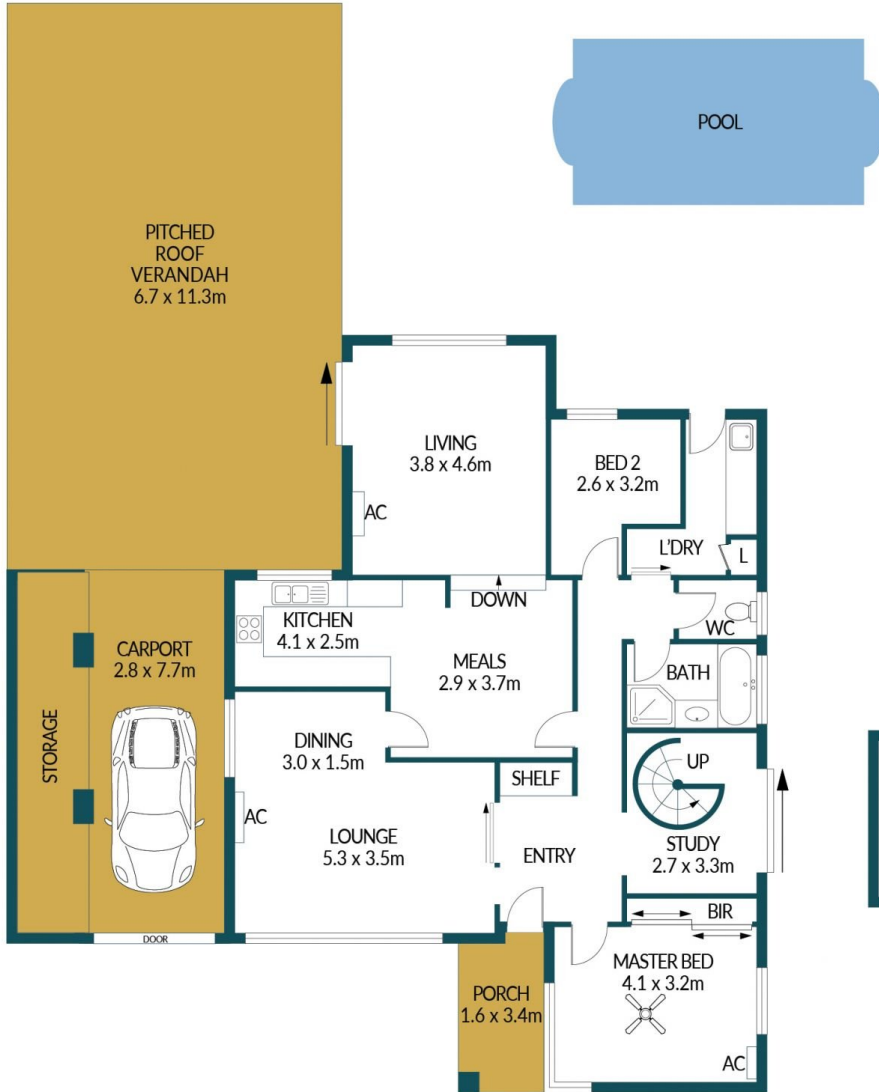
Price : \$ 675,000
Building Size : 154 sqm
Land Size : 640 sqm
View : <https://www.edgerealty.com.au/sale/sa/north-north-east-suburbs/salisbury-park/residential/house/7464640>



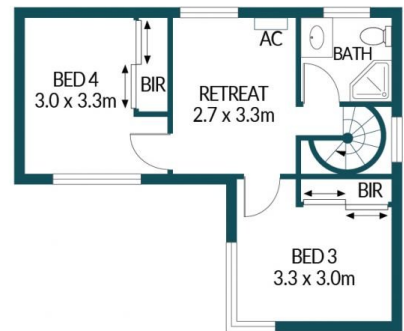
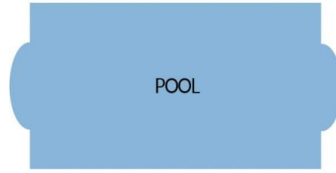
Mike Lao
0410390250



Tyson Bennett
0437161997



LOWER LEVEL



UPPER LEVEL

27 TERRIGAL DRIVE, SALISBURY PARK

Disclaimer

Plans shown are for marketing purposes only. All dimensions are approximate and not to scale. They are subject to errors and inaccuracies and no liability will be accepted. Interested parties should make their own enquiries. Inclusions and exclusions must be confirmed in the Residential Contract.

APPROXIMATE DIMENSIONS

LIVING:	154.3m ²
PORCH:	5.4m ²
CARPORT:	21.5m ²
STORAGE/VERANDAH:	85.7m ²
TOTAL:	266.9m ²