



6/14 Rhyne Avenue SALISBURY SA

2 1 1

For an in-depth look at this home, please click on the 3D tour for a virtual walk-through or copy and paste this link into your browser

Virtual <https://my.matterport.com/show/?m=1rCys9Xyvwq> Tour Link:

To submit an offer, please copy and paste this link into your browser:
<https://www.edgerealty.com.au/buying/make-an-offer/>

Mike Lao, Brendon Ly and Edge Realty RLA256385 are proud to present to the market this well-maintained value-buy! This two-bedroom property is a true hidden gem, tucked away in a quiet neighbourhood pocket, and ready to call home. As you enter the property, you are greeted with charming interiors showcasing a neutral paint palette, and an open plan living/dining/kitchen space that is

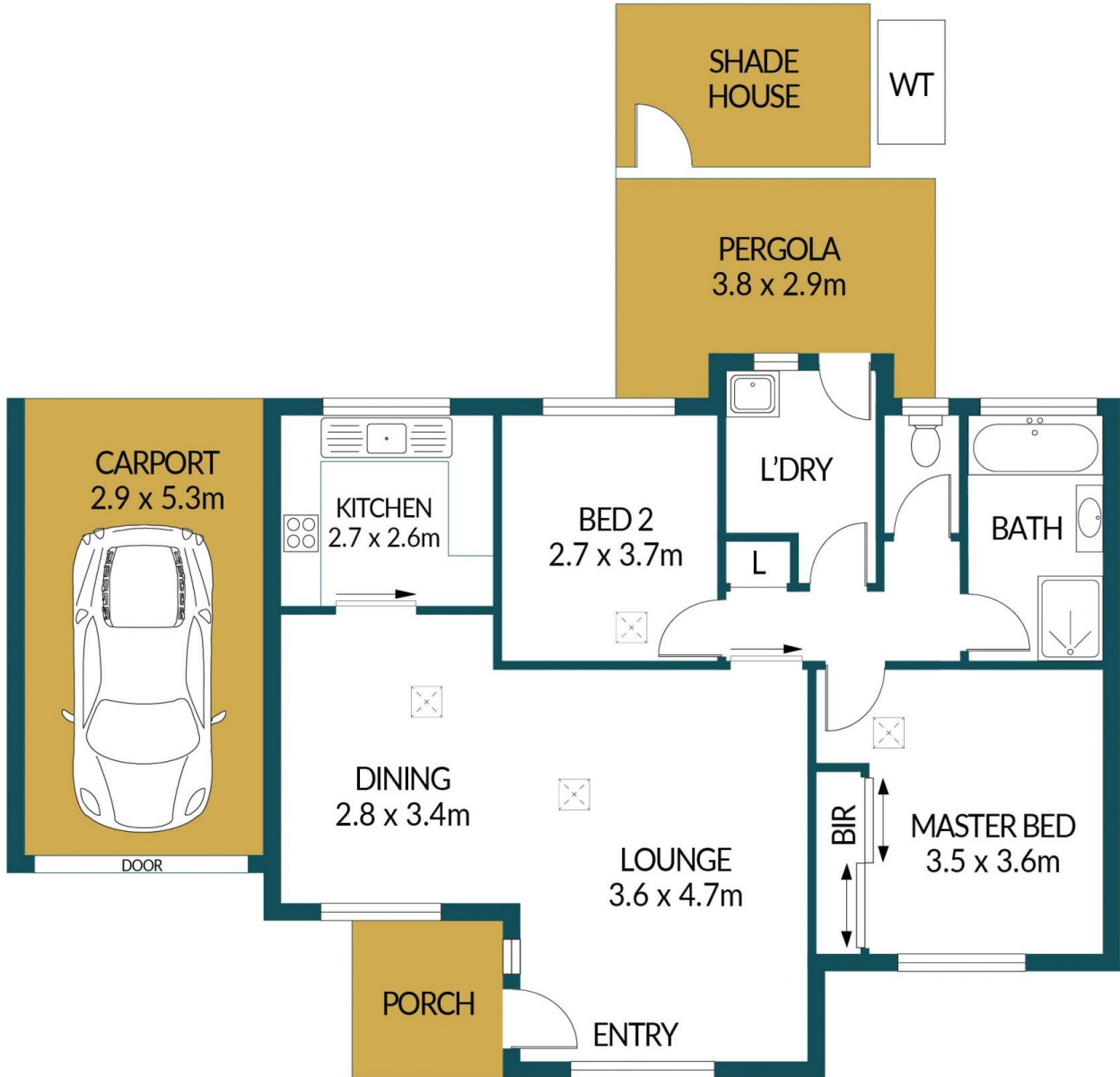
Price : \$ 340,000
Building Size : 69 sqm
Land Size : 200 sqm
View : <https://www.edgerealty.com.au/sale/sa/north-north-east-suburbs/salisbury/residential/house/7566599>



Mike Lao
0410390250



Brendon Ly
0447888444



6.14 RHYNE AVENUE, SALISBURY

Disclaimer

Plans shown are for marketing purposes only. All dimensions are approximate and not to scale. They are subject to errors and inaccuracies and no liability will be accepted. Interested parties should make their own enquiries. Inclusions and exclusions must be confirmed in the Residential Contract.

APPROXIMATE DIMENSIONS

LIVING:	69.2m ²
CARPORT:	15.4m ²
PORCH/PERGOLA:	14.5m ²
SHADE HOUSE:	6.0m ²
TOTAL:	105.1m ²