

## 13 Dukas Drive INGLE FARM SA

3 1 2

\*For an in-depth look at this home, please click on the 3D tour for a virtual walk-through or copy and paste this link into your browser\*

Virtual [Tour](https://my.matterport.com/show/?m=xxDFu5DrG83) Link: <https://my.matterport.com/show/?m=xxDFu5DrG83>

To submit an offer, please copy and paste this link into your browser:  
<https://www.edgerealty.com.au/buying/make-an-offer/>

Tyson Bennett, Mike Lao and Edge Realty RLA256385 are proud to present to the market this beautifully renovated 1970s home that offers the perfect blend of old-world elegance and modern comforts. Boasting 3 bedrooms, 1 bathroom, and multiple living spaces both inside and out, this home offers the perfect combination of comfort and convenience, instantly captivating with its landscaped front

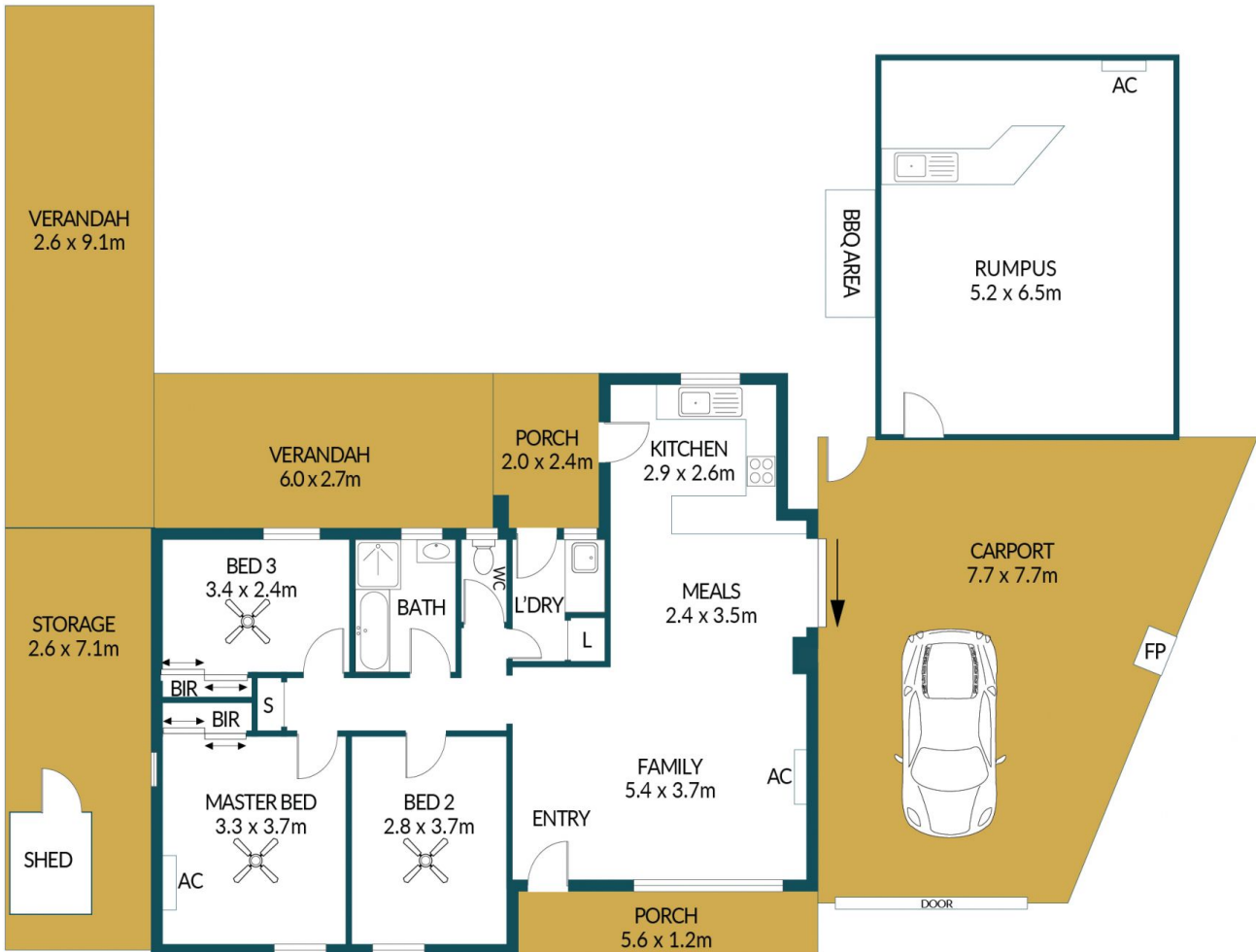
**Price** : \$ 581,000  
**Building Size** : 134 sqm  
**Land Size** : 530 sqm  
**View** : <https://www.edgerealty.com.au/sale/sa/north-north-east-suburbs/ingle-farm/residential/house/7646813>



**Tyson Bennett**  
0437161997



**Mike Lao**  
0410390250



## 13 DUKAS DRIVE, INGLE FARM

### Disclaimer

Plans shown are for marketing purposes only. All dimensions are approximate and not to scale. They are subject to errors and inaccuracies and no liability will be accepted. Interested parties should make their own enquiries. Inclusions and exclusions must be confirmed in the Residential Contract.

### APPROXIMATE DIMENSIONS

LIVING:	134.2m <sup>2</sup>
CARPORT/STORAGE:	63.0m <sup>2</sup>
PORCH/VERANDAH:	46.6m <sup>2</sup>
RUMPUS/SHED:	40.0m <sup>2</sup>
TOTAL:	283.8m <sup>2</sup>