

## 29 Grace Boulevard SMITHFIELD PLAINS SA

3 2 1

\*For an in-depth look at this home, please click on the 3D tour for a virtual walk-through or copy and paste this link into your browser\*

Virtual <https://my.matterport.com/show/?m=7PqFuPQrSCQ> Tour Link:

To submit an offer, please copy and paste this link into your browser:  
<https://www.edgerealty.com.au/buying/make-an-offer/>

Mike Lao, Tyson Bennett and Edge Realty are proud to present to the market your family-friendly oasis set within a quiet cul-de-sac just a short walk from schools, parks and shops. This stylish home offers easy-care living for those wanting to move in and enjoy or for investors it will perfectly complement your portfolio and the prized location ensure you'll never be short on tenants eager to call this property

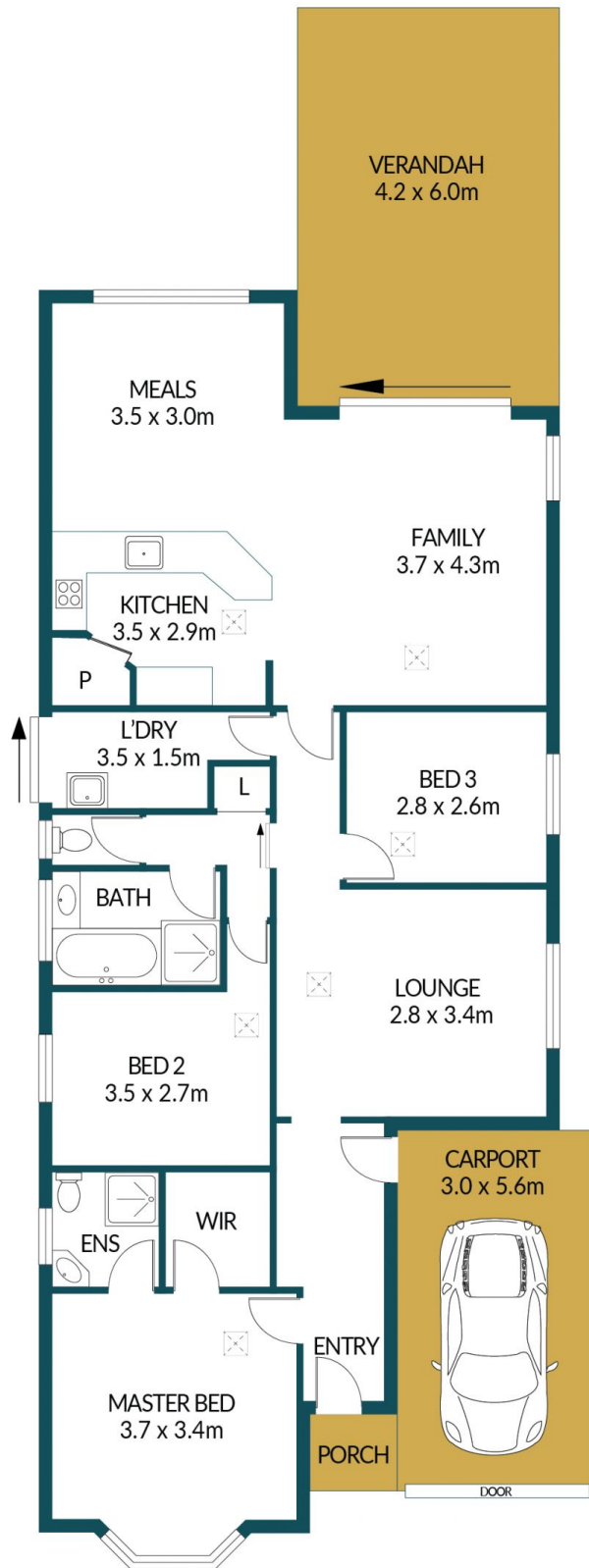
**Price** : \$ 461,000  
**Building Size** : 127 sqm  
**Land Size** : 300 sqm  
**View** : <https://www.edgerealty.com.au/sale/sa/north-north-east-suburbs/smithfield-plains/residential/house/7706482>



**Mike Lao**  
0410390250



**Tyson Bennett**  
0437161997



## 29 GRACE BOULEVARD, SMITHFIELD PLAINS

### Disclaimer

Plans shown are for marketing purposes only. All dimensions are approximate and not to scale. They are subject to errors and inaccuracies and no liability will be accepted. Interested parties should make their own enquiries. Inclusions and exclusions must be confirmed in the Residential Contract.

### APPROXIMATE DIMENSIONS

LIVING:	127.9m <sup>2</sup>
CARPORT:	16.8m <sup>2</sup>
PORCH:	1.4m <sup>2</sup>
VERANDAH:	25.2m <sup>2</sup>
TOTAL:	171.3m <sup>2</sup>