



12 Cushen Street SMITHFIELD PLAINS SA

3 1 1

For an in-depth look at this home, please click on the 3D tour for a virtual walk-through or copy and paste this link into your browser

Virtual Tour Link: <https://shorturl.at/izG25>

To submit an offer, please copy and paste this link into your browser:

<https://www.edgerealty.com.au/buying/make-an-offer/>

Mike Lao, Brendon Ly and Edge Realty RLA256385 are proud to present to the market a fantastic family home offering space, comfort and convenience on a 674sqm approx block. This Smithfield Plains abode will appeal to everyone from first-time buyers to growing families and investors on the hunt for a quality property within this sought-after location. The property is currently tenanted on a periodic lease returning \$350 per week.

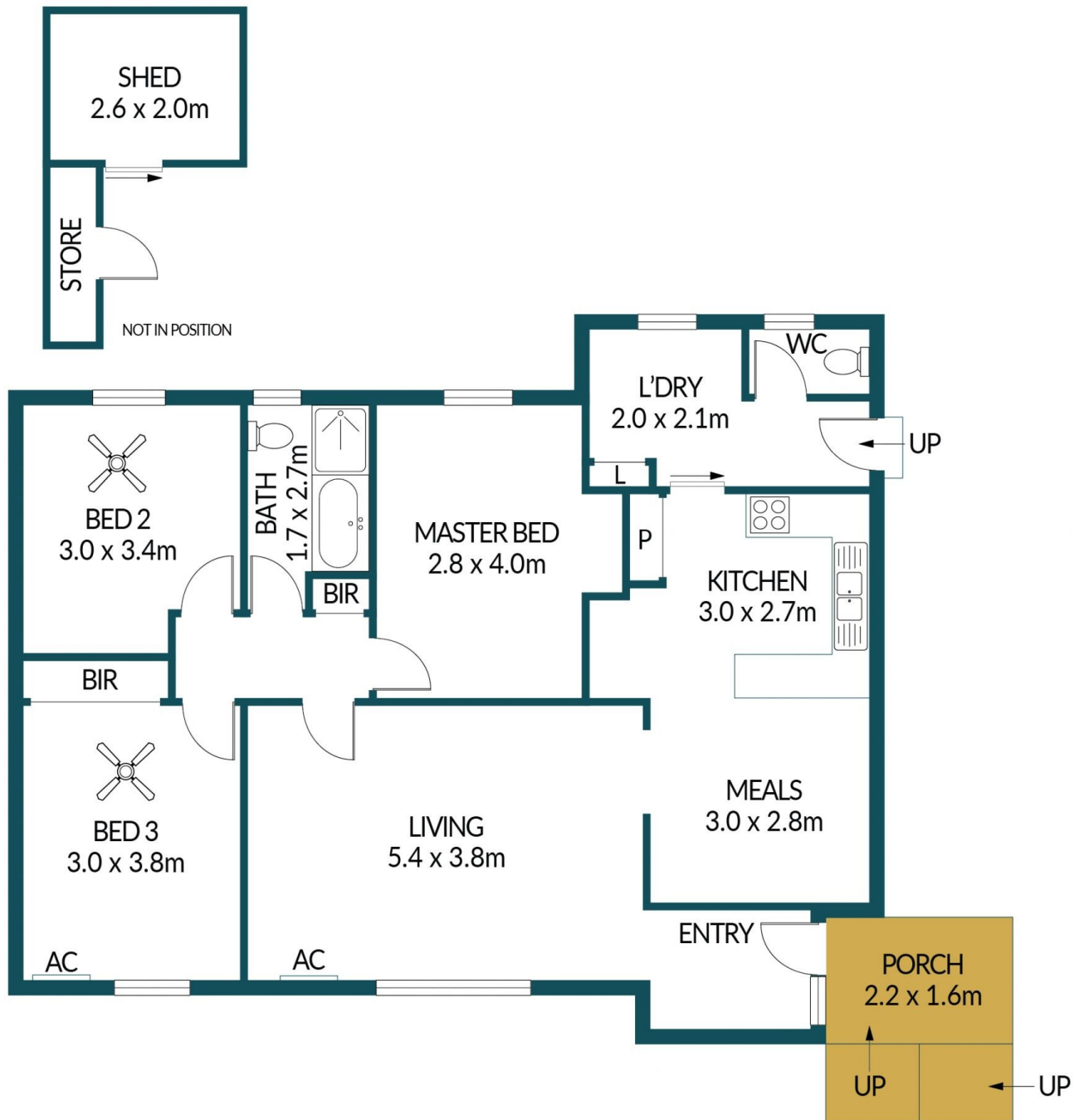
Price : \$ 414,000
Building Size : 101 sqm
Land Size : 674 sqm
View : <https://www.edgerealty.com.au/sale/sa/north-north-east-suburbs/smithfield-plains/residential/house/7743201>



Mike Lao
0410390250



Brendon Ly
0447888444



12 CUSHEN STREET, SMITHFIELD PLAINS

Disclaimer

Plans shown are for marketing purposes only. All dimensions are approximate and not to scale. They are subject to errors and inaccuracies and no liability will be accepted. Interested parties should make their own enquiries. Inclusions and exclusions must be confirmed in the Residential Contract.

APPROXIMATE DIMENSIONS

LIVING:	101.1m ²
SHED:	5.2m ²
PORCH:	3.5m ²
STORE:	3.0m ²
TOTAL:	112.8m ²