



**8/41 Burton Road SALISBURY SA**

2 1 1

\*For an in-depth look at this home, please click on the 3D tour for a virtual walk-through or copy and paste this link into your browser\*

Virtual Tour Link: <https://shorturl.at/fjps9>

To submit an offer, please copy and paste this link into your browser:

<https://www.edgerealty.com.au/buying/make-an-offer/>

Mike Lao, Brendon Ly and Edge Realty RLA256385 are proud to present to the market this easy-care abode promising the life of convenience. Perfectly situated within easy walking distance of both the shops and bus stops, this spacious property boasts tastefully modern interiors with a combination of comfortable carpet and tiled flooring, air conditioning, and large windows to catch the sunshine and fresh breeze throughout. The property is currently tenanted

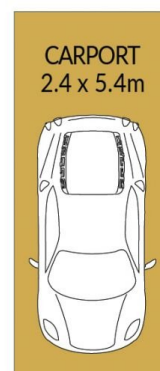
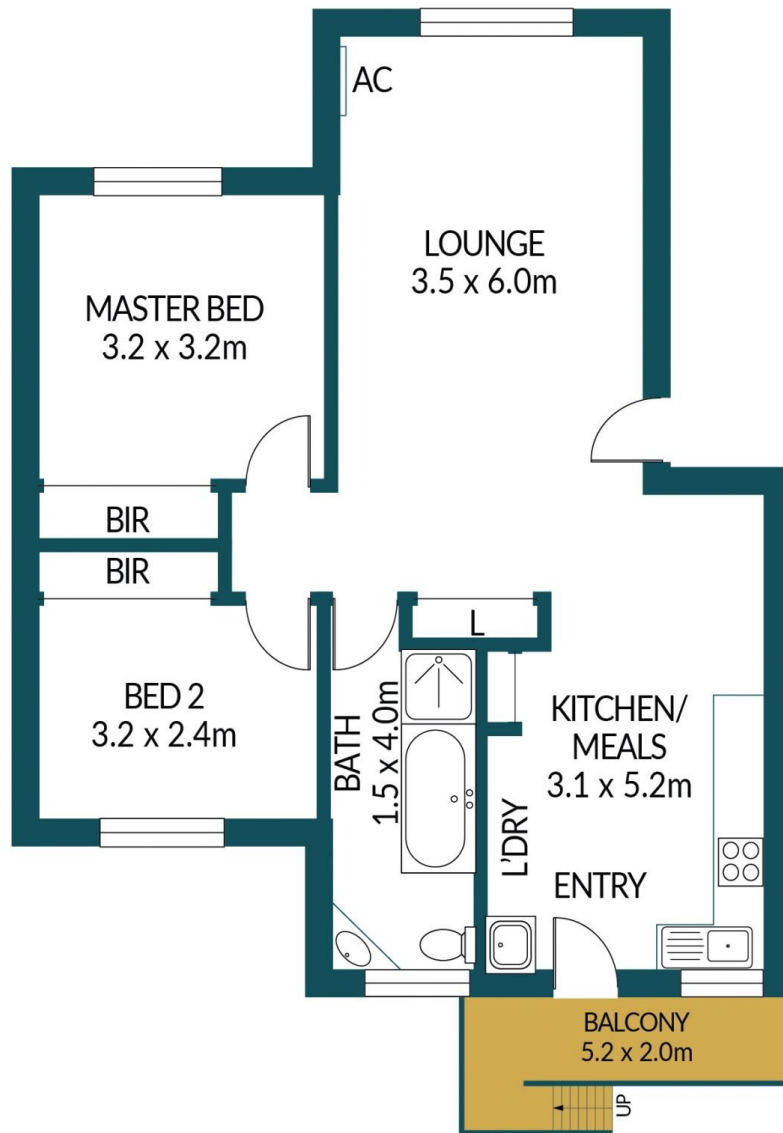
**Price** : \$ 255,000  
**Building Size** : 71 sqm  
**View** : <https://www.edgerealty.com.au/sale/sa/north-north-east-suburbs/salisbury/residential/unit/7780228>



**Mike Lao**  
0410390250



**Brendon Ly**  
0447888444



## 8.41 BURTON ROAD, SALISBURY

### Disclaimer

Plans shown are for marketing purposes only. All dimensions are approximate and not to scale. They are subject to errors and inaccuracies and no liability will be accepted. Interested parties should make their own enquiries. Inclusions and exclusions must be confirmed in the Residential Contract.

### APPROXIMATE DIMENSIONS

LIVING:	71.0m <sup>2</sup>
BALCONY:	10.4m <sup>2</sup>
CARPORT	13.0m <sup>2</sup>
TOTAL:	94.4m <sup>2</sup>