



20 Tatura Court CRAIGMORE SA

4 2 3

For an in-depth look at this home, please click on the 3D tour for a virtual walk-through or copy and paste this link into your browser

Virtual <https://my.matterport.com/show/?m=HSwAo7L8p3s> Tour Link:

To submit an offer, please copy and paste this link into your browser:
<https://www.edgerealty.com.au/buying/make-an-offer/>

Mike Lao, Tyson Bennett and Edge Realty RLA256385 are proud to present to the market this stylish, contemporary home that offers four bedroom, two bathrooms, multiple living areas and a long list of must-have features. This house is perfect for homeowners that want a cosy home to come back to as well as those who love to kick back and entertain guests.

Price : \$ 570,000
Building Size : 181 sqm
Land Size : 733 sqm
View : <https://www.edgerealty.com.au/sale/sa/north-north-east-suburbs/craigmore/residential/house/7788765>



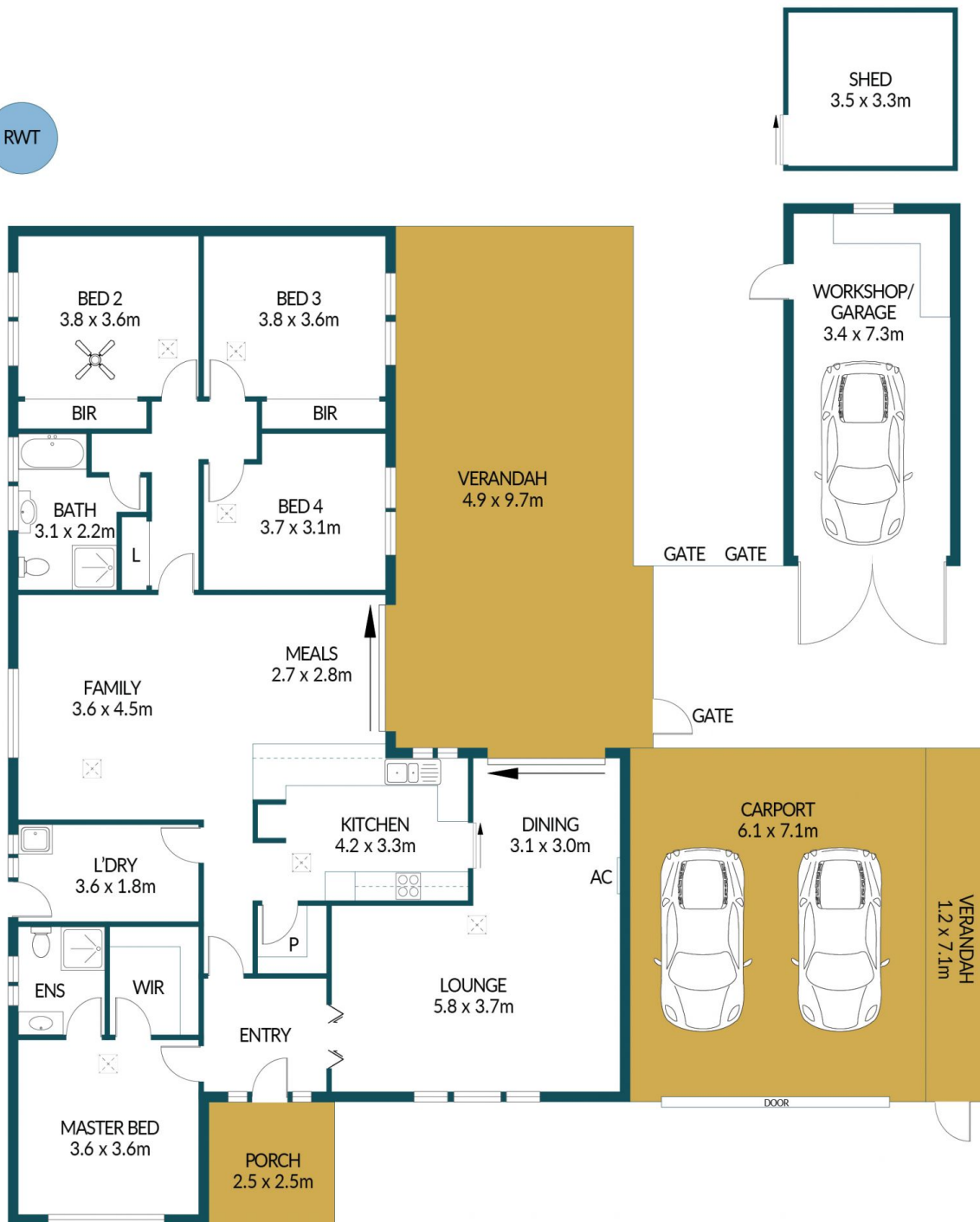
Mike Lao
0410390250



Tyson Bennett
0437161997



RWT



20 TATURA COURT, CRAIGMORE

Disclaimer

Plans shown are for marketing purposes only. All dimensions are approximate and not to scale. They are subject to errors and inaccuracies and no liability will be accepted. Interested parties should make their own enquiries. Inclusions and exclusions must be confirmed in the Residential Contract.

APPROXIMATE DIMENSIONS

LIVING:	181.3m ²
GARAGE/WORKSHOP:	24.8m ²
PORCH/VERANDAH:	67.0m ²
SHED/CARPORT:	54.8m ²
TOTAL:	327.9m ²