



## 6 Grayling Street ELIZABETH EAST SA

2 1 3

\*For an in-depth look at this home, please click on the 3D tour for a virtual walk-through or copy and paste this link into your browser\*

Virtual Tour Link: <https://shorturl.at/gB257>

To submit an offer, please copy and paste this link into your browser:

<https://www.edgerealty.com.au/buying/make-an-offer/>

Mike Lao, Brendon Ly and Edge Realty RLA256385 are proud to present to the market this well-situated two-bedroom home situated on a quiet, family-friendly street perfectly suited to first-time buyers, downsizers and discerning investors alike. With off street parking for multiple cars and spacious indoor spaces, this is a property perfect for those who love to entertain or work on their next home project. The property is currently tenanted with a

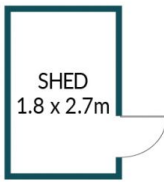
**Price** : \$ 440,000  
**Building Size** : 79 sqm  
**Land Size** : 1003 sqm  
**View** : <https://www.edgerealty.com.au/sale/sa/north-north-east-suburbs/elizabeth-east/residential/house/7796875>



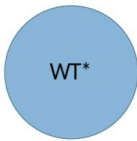
**Mike Lao**  
0410390250



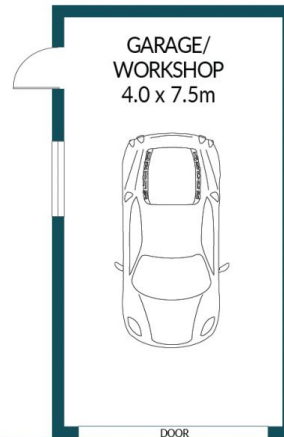
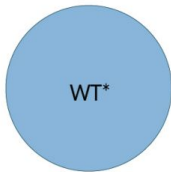
**Brendon Ly**  
0447888444



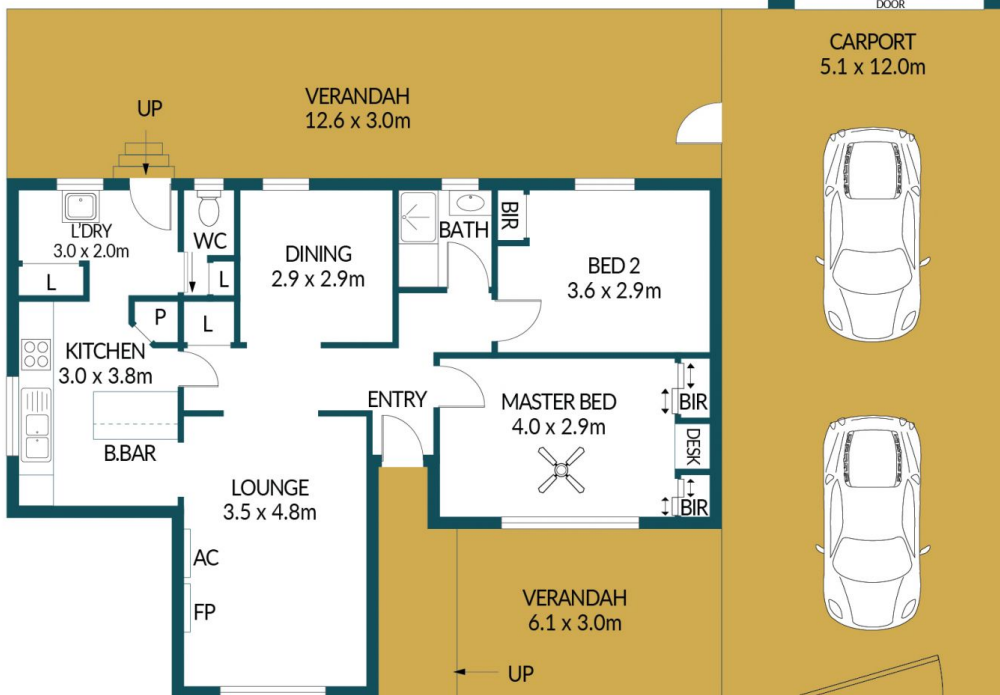
SHED  
1.8 x 2.7m



\*do not hold water



GARAGE/  
WORKSHOP  
4.0 x 7.5m



## 6 GRAYLING STREET, ELIZABETH EAST

### Disclaimer

Plans shown are for marketing purposes only. All dimensions are approximate and not to scale. They are subject to errors and inaccuracies and no liability will be accepted. Interested parties should make their own enquiries. Inclusions and exclusions must be confirmed in the Residential Contract.

### APPROXIMATE DIMENSIONS

LIVING:	79.3m <sup>2</sup>
GARAGE/WORKSHOP:	30.0m <sup>2</sup>
VERANDAH:	56.1m <sup>2</sup>
CARPORT/SHED:	66.0m <sup>2</sup>
TOTAL:	231.4m <sup>2</sup>