

2 Rosella Drive EYRE SA

3 2 2

For an in-depth look at this home, please click on the 3D tour for a virtual walk-through or copy and paste this link into your browser

Virtual <https://my.matterport.com/show/?m=XStXn6cEERw> Tour Link:

To submit an offer, please copy and paste this link into your browser:
<https://www.edgerealty.com.au/buying/make-an-offer/>

Mike Lao, Tyson Bennett and Edge Realty RLA256385 are proud to present to the market a stylish family home ready for you to simply move in and start making memories. Families craving contemporary comfort, convenience and charm will adore this gorgeous three-bedroom, two-bathroom home set on an idyllic corner block within a peaceful and prized pocket of Eyre.

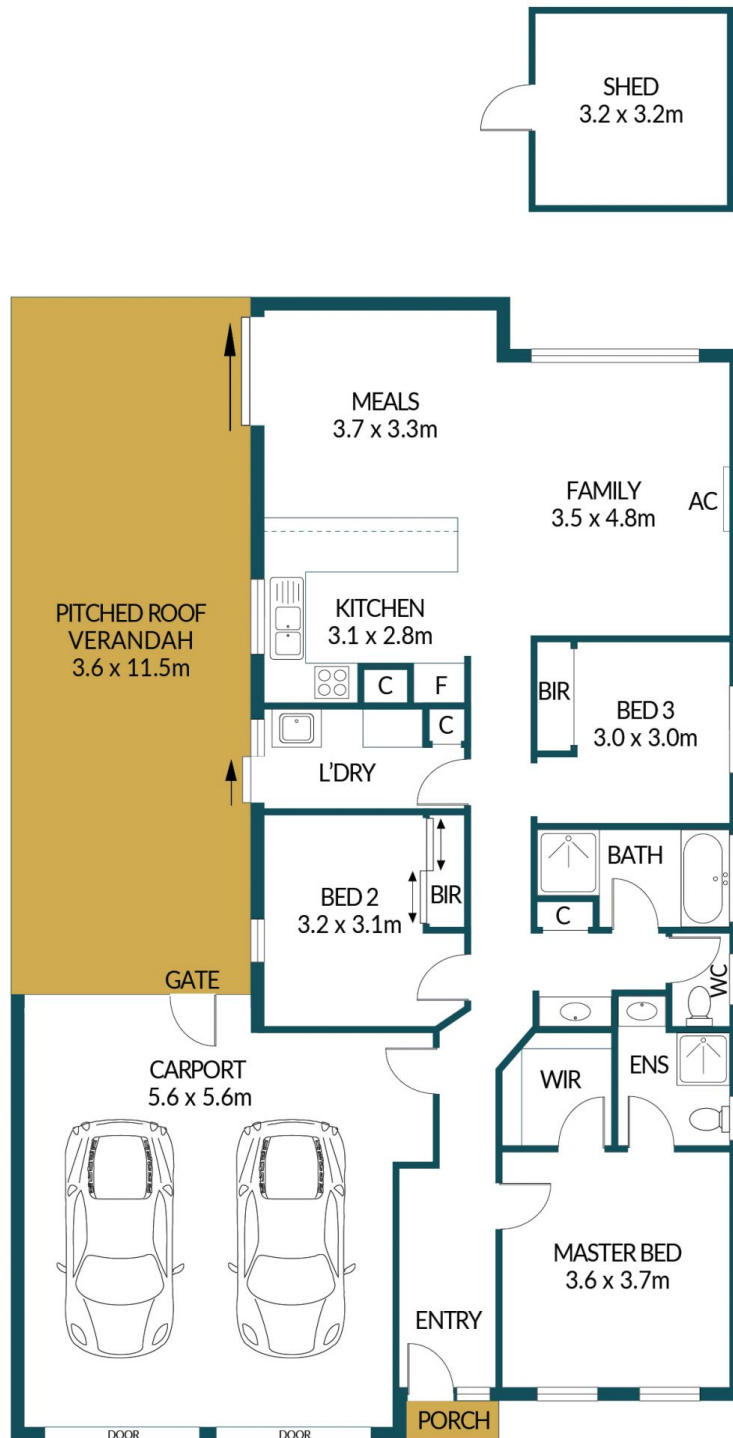
Price : \$ 521,500
Building Size : 110 sqm
Land Size : 418 sqm
View : <https://www.edgerealty.com.au/sale/sa/north-north-east-suburbs/eyre/residential/house/7812336>



Mike Lao
0410390250



Tyson Bennett
0437161997



2 ROSELLA DRIVE, EYRE

Disclaimer

Plans shown are for marketing purposes only. All dimensions are approximate and not to scale. They are subject to errors and inaccuracies and no liability will be accepted. Interested parties should make their own enquiries. Inclusions and exclusions must be confirmed in the Residential Contract.

APPROXIMATE DIMENSIONS

LIVING:	110.1m ²
CARPORT:	31.3m ²
PORCH/PERGOLA:	42.5m ²
SHED:	10.2m ²
TOTAL:	194.1m ²