



2A Clement Grove BURTON SA

3 2 2

For an in-depth look at this home, please click on the 3D tour for a virtual walk-through or copy and paste this link into your browser

Virtual <https://my.matterport.com/show/?m=5wBEbAcSwp1> Tour Link:

To submit an offer, please copy and paste this link into your browser:
<https://www.edgerealty.com.au/buying/make-an-offer/>

Mike Lao, Brendon Ly and Edge Realty RLA256385 are proud to present to the market this exceptional 3 bedroom, 2 bathroom home, you'll be proud to call your own. Situated in a highly sought-after family-friendly neighbourhood, this home offers a perfect blend of style, comfort, and convenience with multiple living spaces so the family can spread out and relax.

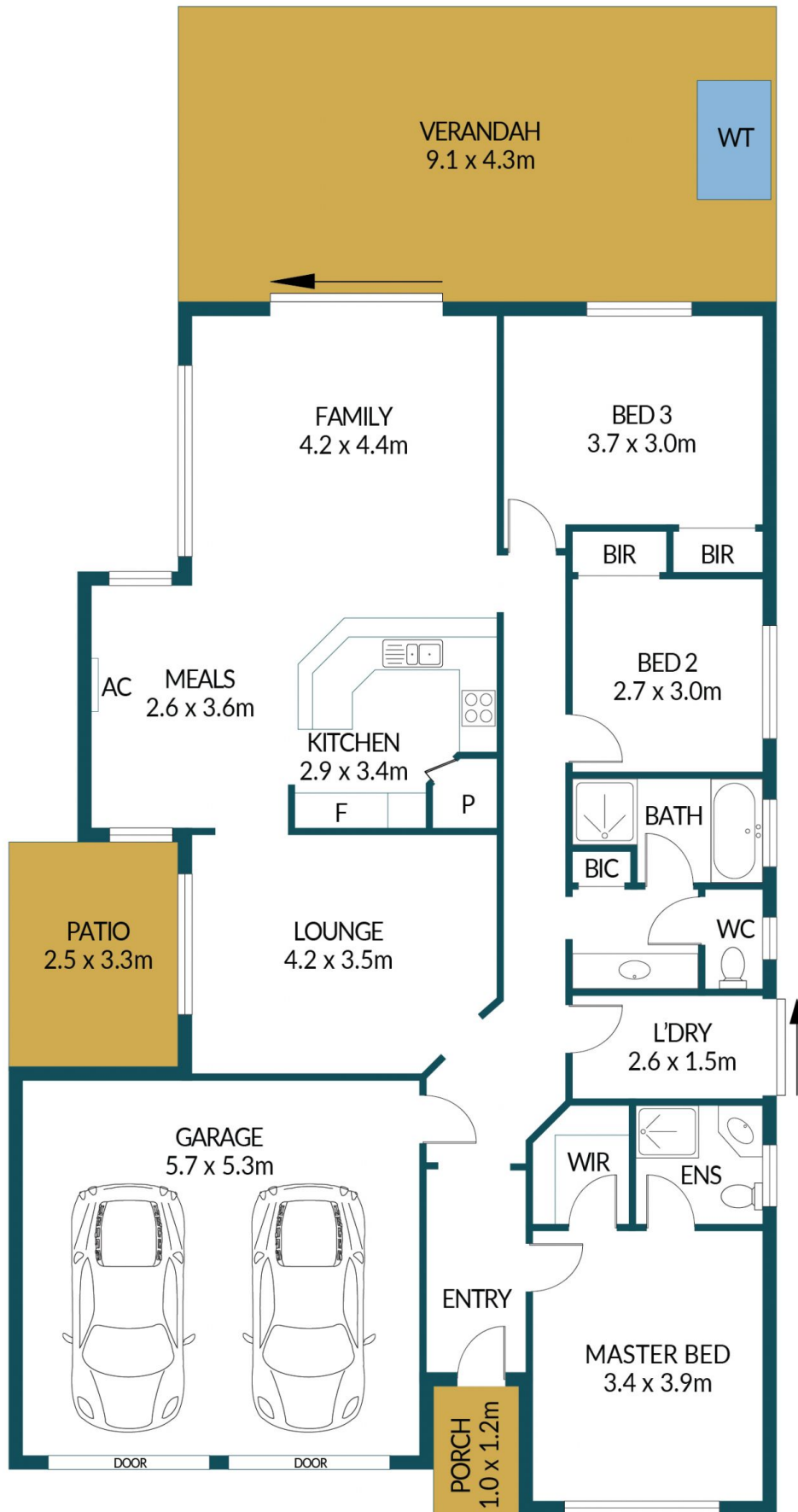
Price : \$ 565,000
Building Size : 141 sqm
Land Size : 360 sqm
View : <https://www.edgerealty.com.au/sale/sa/north-north-east-suburbs/burton/residential/house/7812445>



Mike Lao
0410390250



Brendon Ly
0447888444



2A CLEMENT GROVE, BURTON

Disclaimer

Plans shown are for marketing purposes only. All dimensions are approximate and not to scale. They are subject to errors and inaccuracies and no liability will be accepted. Interested parties should make their own enquiries. Inclusions and exclusions must be confirmed in the Residential Contract.

APPROXIMATE DIMENSIONS

LIVING:	141.2m ²
GARAGE:	30.2m ²
PORCH/PATIO:	9.5m ²
VERANDAH:	39.1m ²
TOTAL:	220.0m ²