



23 Bloomfield Crescent ELIZABETH DOWNS SA

3 1 1

For an in-depth look at this home, please click on the 3D tour for a virtual walk-through or copy and paste this link into your browser

Virtual Tour Link: <https://shorturl.at/ipAS0>

To submit an offer, please copy and paste this link into your browser:

<https://www.edgerealty.com.au/buying/make-an-offer/>

Mike Lao, Tyson Bennett and Edge Realty RLA256385 are proud to present to the market this humble 3 bedroom, 1 bathroom, Elizabeth Downs home that will delight first-time buyers, young families and eagle-eyed investors alike. Currently, the property has fantastic tenants on a fixed lease of \$310 per week in place until 10/5/24 for instant returns!

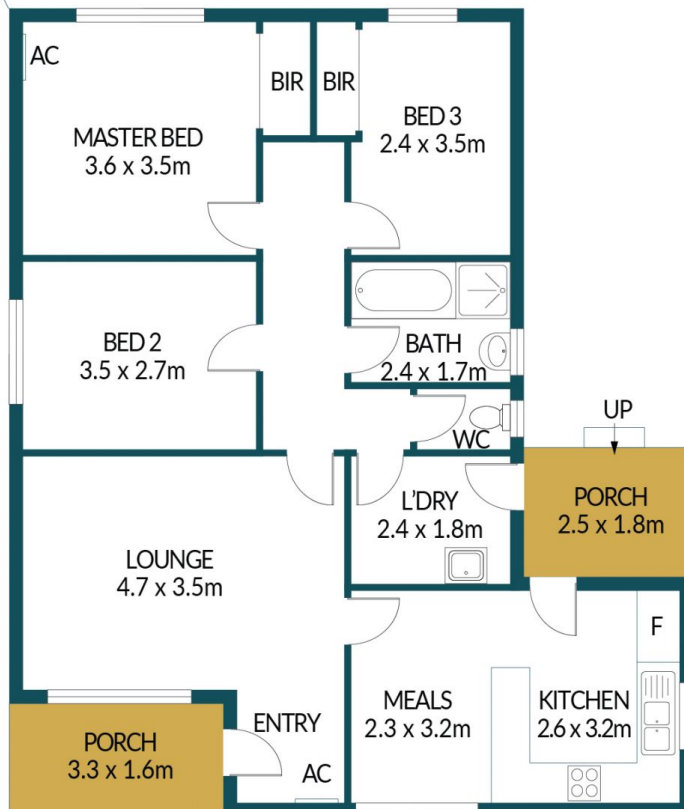
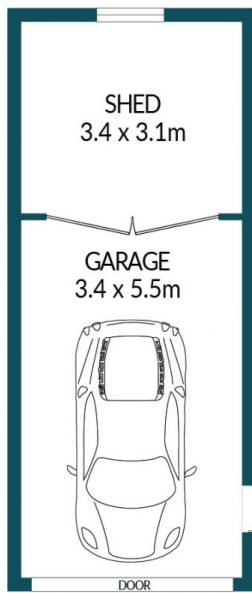
Price : \$ 435,000
Building Size : 96 sqm
Land Size : 724.64 sqm
View : <https://www.edgerealty.com.au/sale/sa/north-north-east-suburbs/elizabeth-downs/residential/house/7813064>



Mike Lao
0410390250



Tyson Bennett
0437161997



23 BLOOMFIELD CRESCENT, ELIZABETH DOWNS

Disclaimer

Plans shown are for marketing purposes only. All dimensions are approximate and not to scale. They are subject to errors and inaccuracies and no liability will be accepted. Interested parties should make their own enquiries. Inclusions and exclusions must be confirmed in the Residential Contract.

APPROXIMATE DIMENSIONS

LIVING:	96.7m ²
GARAGE:	18.7m ²
PORCH:	9.8m ²
AVIARY/SHED:	18.3m ²
TOTAL:	143.5m ²