



12 Waldron Street ELIZABETH EAST SA

3 1 2

For an in-depth look at this home, please click on the 3D tour for a virtual walk-through or copy and paste this link into your browser

Virtual Tour Link:
<https://my.matterport.com/show/?m=1fY CZqvw7Y9>

To submit an offer, please copy and paste this link into your browser:
<https://www.edgerealty.com.au/buying/make-an-offer/>

Mike Lao, Brendon Ly and Edge Realty RLA256385 are proud to present to the market this prime investment opportunity. This low-maintenance home would make the ideal rental with future tenants eager to secure a home in this central location while keen renovators could look to make some key updates and create a contemporary family home.

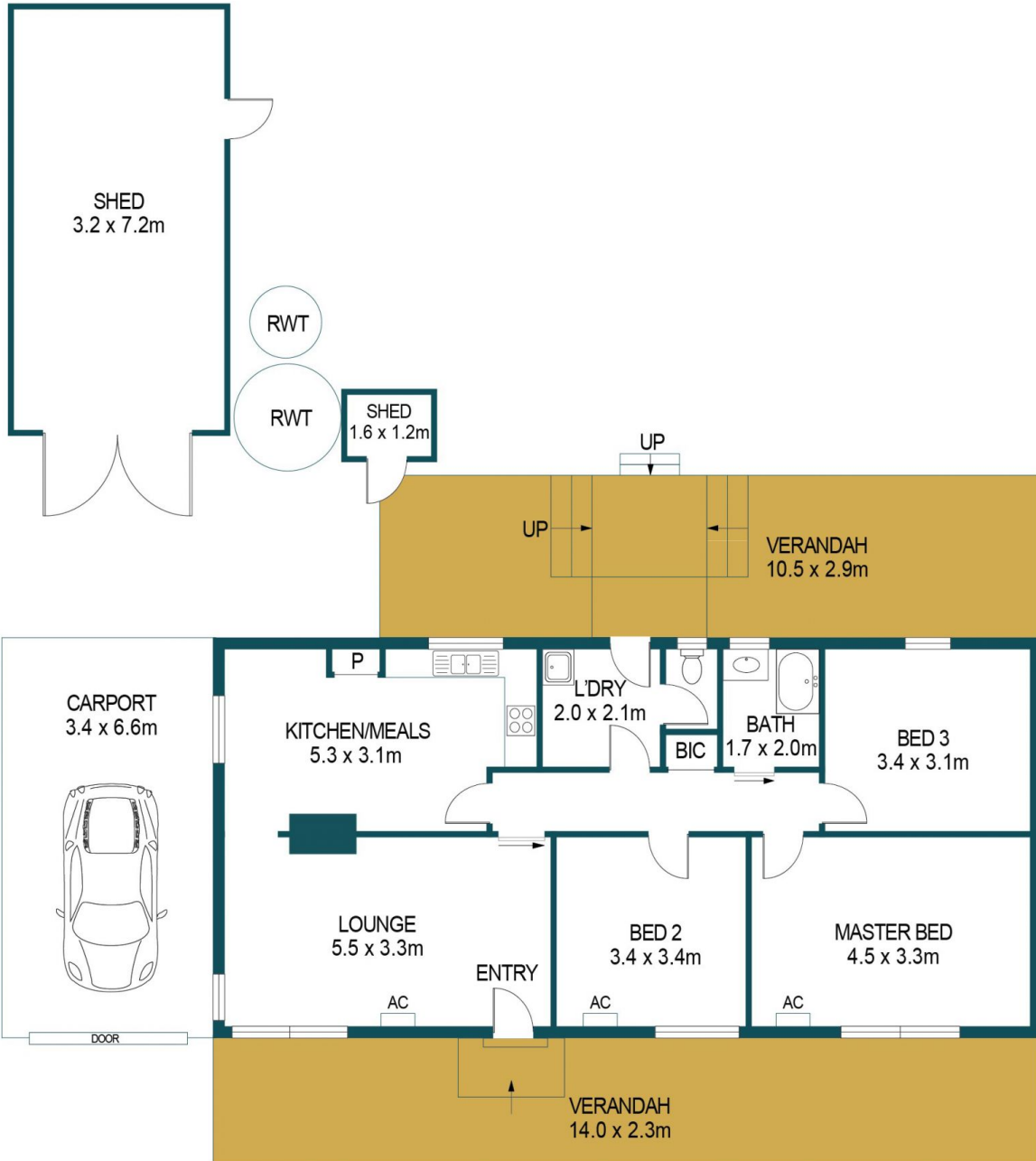
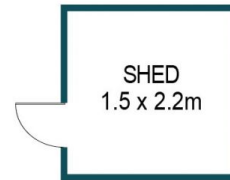
Price : \$ 450,000
Building Size : 90 sqm
Land Size : 800 sqm
View : <https://www.edgerealty.com.au/sale/sa/north-north-east-suburbs/elizabeth-east/residential/house/7814387>



Mike Lao
0410390250



Brendon Ly
0447888444



APPROXIMATE DIMENSIONS	
LIVING:	90.2m ²
CARPORT:	22.4m ²
SHED:	28.3m ²
VERANDAH:	74.0m ²
TOTAL:	214.9m ²

12 WALDRON STREET, ELIZABETH EAST

DISCLAIMER

PLANS SHOWN ARE FOR MARKETING PURPOSES ONLY, ALL DIMENSIONS ARE APPROXIMATE AND NOT TO SCALE. THEY ARE SUBJECT TO ERRORS AND INACCURACIES AND NO LIABILITY WILL BE ACCEPTED. INTERESTED PARTIES SHOULD MAKE THEIR OWN ENQUIRIES.



IMAGES AND FLOORPLAN BY:
IN-HOUSE
IMAGING
inhouseimaging.com.au