



## 280 Petherton Road ANDREWS FARM SA

3 2 1

\*For an in-depth look at this home, please click on the 3D tour for a virtual walk-through or copy and paste this link into your browser\*

Virtual <https://my.matterport.com/show/?m=T29owRvxxgG> Tour Link:

To submit an offer, please copy and paste this link into your browser:  
<https://www.edgerealty.com.au/buying/make-an-offer/>

Mike Lao, Tyson Bennett and Edge Realty RLA256385 are proud to present to the market this exceptional 3 bedroom modern property, perfect for families, first home buyers, and investors. This low-maintenance home stands out with its striking facade, featuring a blend of brick and rendering that offers instant street appeal and a warm welcome home. Nestled in a family-friendly area in the thriving

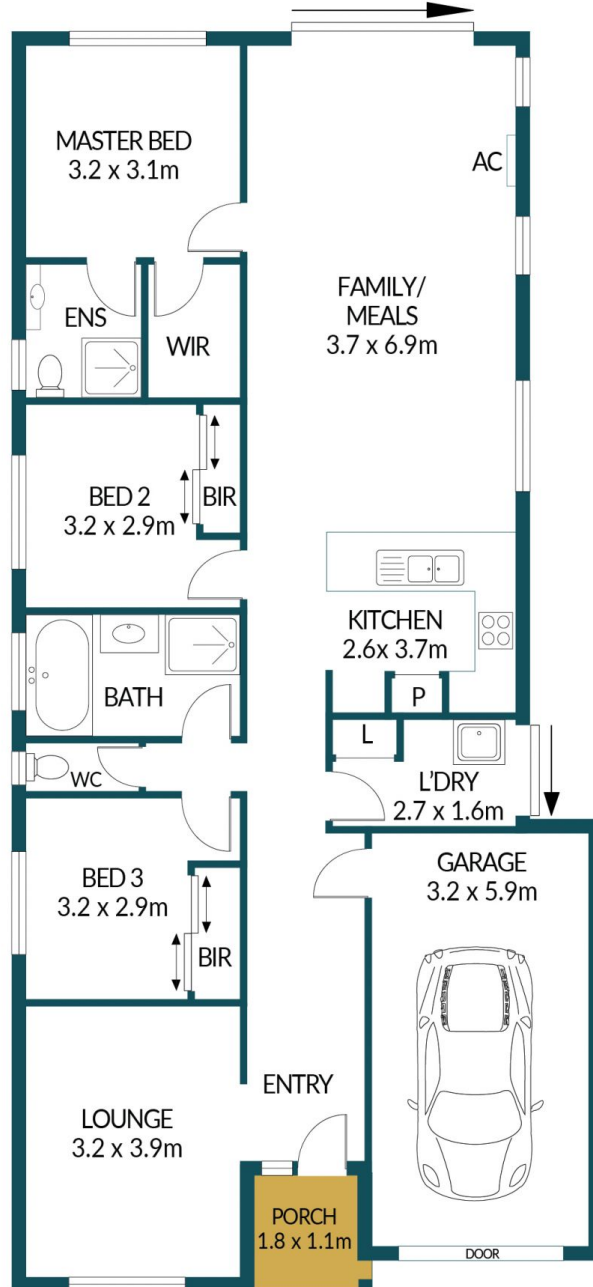
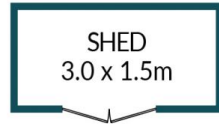
**Price** : \$ 546,000  
**Building Size** : 117 sqm  
**Land Size** : 320 sqm  
**View** : <https://www.edgerealty.com.au/sale/sa/north-north-east-suburbs/andrews-farm/residential/house/8020477>



**Mike Lao**  
0410390250



**Tyson Bennett**  
0437161997



## 280 PETHERTON ROAD, ANDREWS FARM

### Disclaimer

Plans shown are for marketing purposes only. All dimensions are approximate and not to scale. They are subject to errors and inaccuracies and no liability will be accepted. Interested parties should make their own enquiries. Inclusions and exclusions must be confirmed in the Residential Contract.

### APPROXIMATE DIMENSIONS

LIVING:	117.7m <sup>2</sup>
GARAGE:	18.8m <sup>2</sup>
PORCH:	1.9m <sup>2</sup>
SHED:	4.5m <sup>2</sup>
TOTAL:	142.9m <sup>2</sup>