



17 Wilfred Avenue SALISBURY SA

2 1 1

For an in-depth look at this home, please click on the 3D tour for a virtual walk-through or copy and paste this link into your browser

Virtual Tour Link: <https://bit.ly/3yGzKF7>

To submit an offer, please copy and paste this link into your browser:

<https://www.edgerealty.com.au/buying/make-an-offer/>

Mike Lao, Brendon Ly and Edge Realty RLA256385 are proud to present to the market this delightful two-bedroom home nestled in the sought-after suburb of Salisbury, ready for you to move in and enjoy. There will be no shortage of buyers vying to secure this impressive property that is sure to make an enviable first home, downsizer or investment.

Arriving at the address you'll be greeted by the

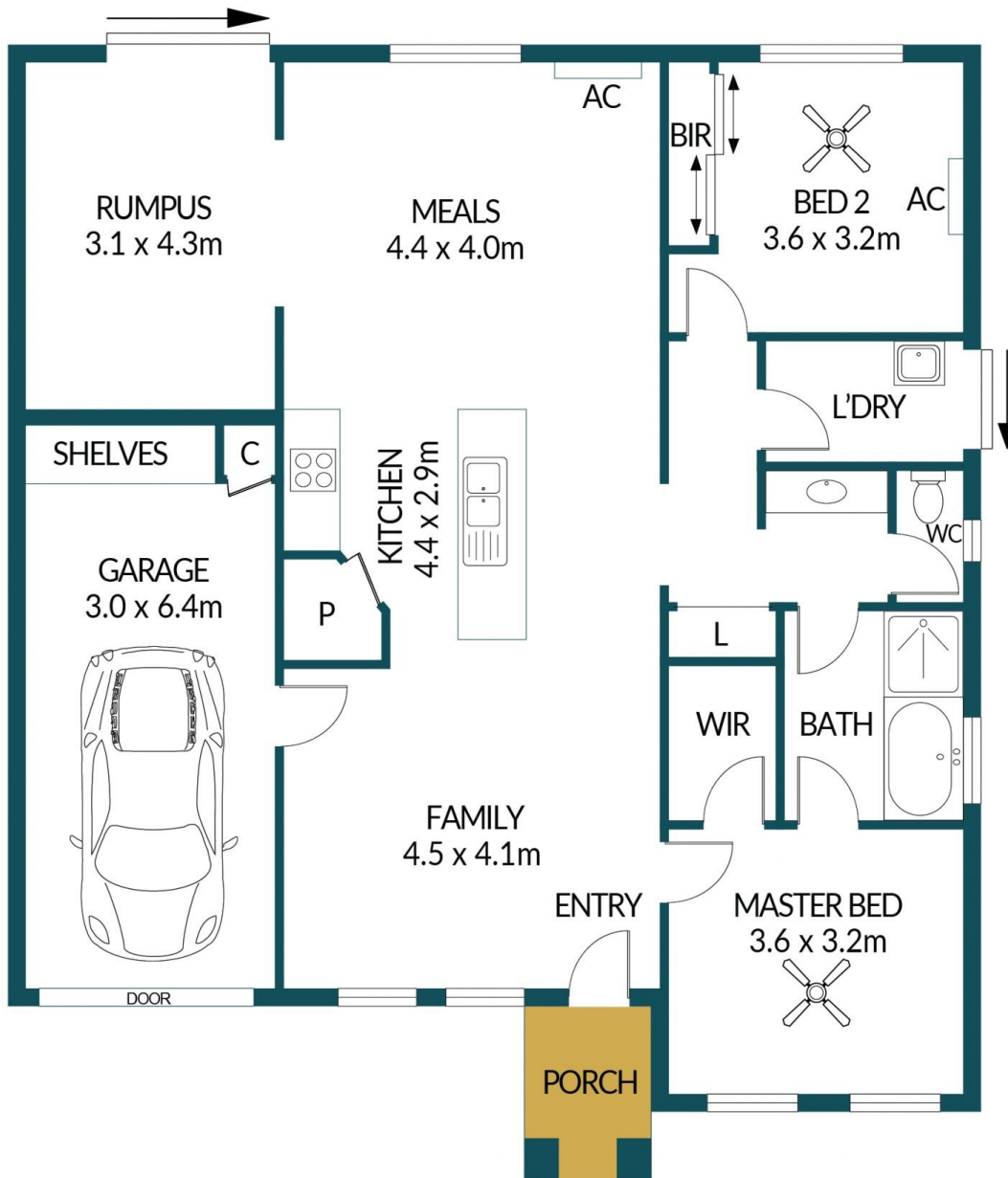
Price : \$ 525,000
Building Size : 110 sqm
Land Size : 270 sqm
View : <https://www.edgerealty.com.au/sale/sa/north-north-east-suburbs/salisbury/residential/house/8027276>



Mike Lao
0410390250



Brendon Ly
0447888444



17 WILFRED AVENUE, SALISBURY

Disclaimer

Plans shown are for marketing purposes only. All dimensions are approximate and not to scale. They are subject to errors and inaccuracies and no liability will be accepted. Interested parties should make their own enquiries. Inclusions and exclusions must be confirmed in the Residential Contract.

APPROXIMATE DIMENSIONS

LIVING:	110.0m ²
GARAGE:	19.2m ²
PORCH:	3.0m ²
TOTAL:	132.2m ²