



16/50 Douglas Road SALISBURY EAST SA

3 1 1

For an in-depth look at this home, please click on the 3D tour for a virtual walk-through or copy and paste this link into your browser

Virtual Tour Link:
<https://my.matterport.com/show/?m=Vi5ERGpgQyz>

To submit an offer, please copy and paste this link into your browser:
<https://www.edgerealty.com.au/buying/make-an-offer/>

Mike Lao, Brendon Ly and Edge Realty RLA256385 are proud to present to the market your gateway to a relaxed lifestyle. This 3-bedroom property boasts a neutral colour palette, creating a fresh and inviting canvas for your family's story. The prime location places you just a short walk from Blue Hills Reserve where you can spend weekends enjoying beautiful family-friendly community.

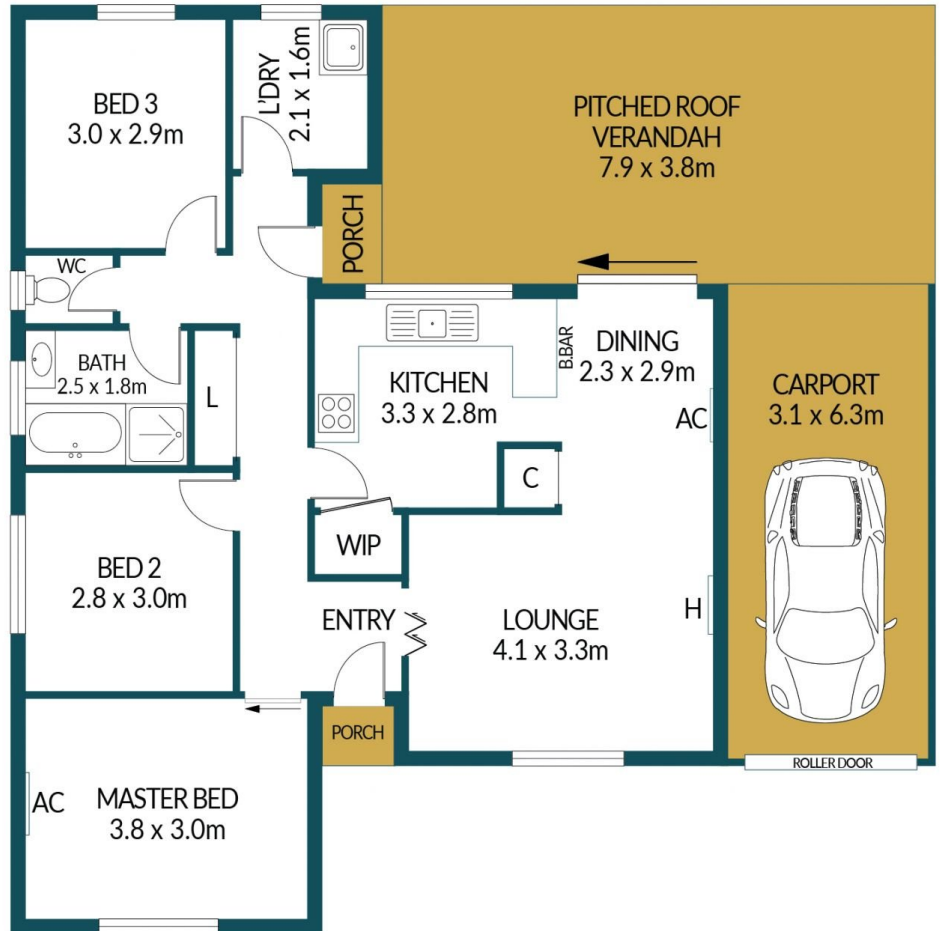
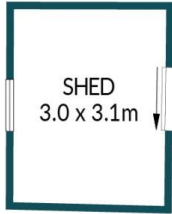
Price : \$ 500,000
Building Size : 83 sqm
View : <https://www.edgerealty.com.au/sale/sa/north-north-east-suburbs/salisbury-east/residential/house/8028527>



Mike Lao
0410390250



Brendon Ly
0447888444



16/50 DOUGLAS ROAD, SALISBURY EAST

Disclaimer

Plans shown are for marketing purposes only. All dimensions are approximate and not to scale. They are subject to errors and inaccuracies and no liability will be accepted. Interested parties should make their own enquiries. Inclusions and exclusions must be confirmed in the Residential Contract.

APPROXIMATE DIMENSIONS

LIVING:	83.1m ²
CARPORT:	19.5m ²
PORCH/SHED:	15.1m ²
VERANDAH:	30.0m ²
TOTAL:	147.7m ²