



## 10 Paginton Crescent ELIZABETH EAST SA

3 2 7

\*For an in-depth look at this home, please click on the 3D tour for a virtual walk-through or copy and paste this link into your browser\*

Virtual Tour Link:  
<https://my.matterport.com/show/?m=ujyh1Mj2hvT>

To submit an offer, please copy and paste this link into your browser:  
<https://www.edgerealty.com.au/buying/make-an-offer/>

Mike Lao, Tyson Bennett and Edge Realty RLA256385 are proud to present to the market this fantastic elevated family home, boasting multiple living areas and a convenient location that caters to all your needs. Perfect for families of all shapes and sizes, first home buyers seeking a spacious haven, or astute investors looking for an excellent return on their investment, this versatile property is a true gem!

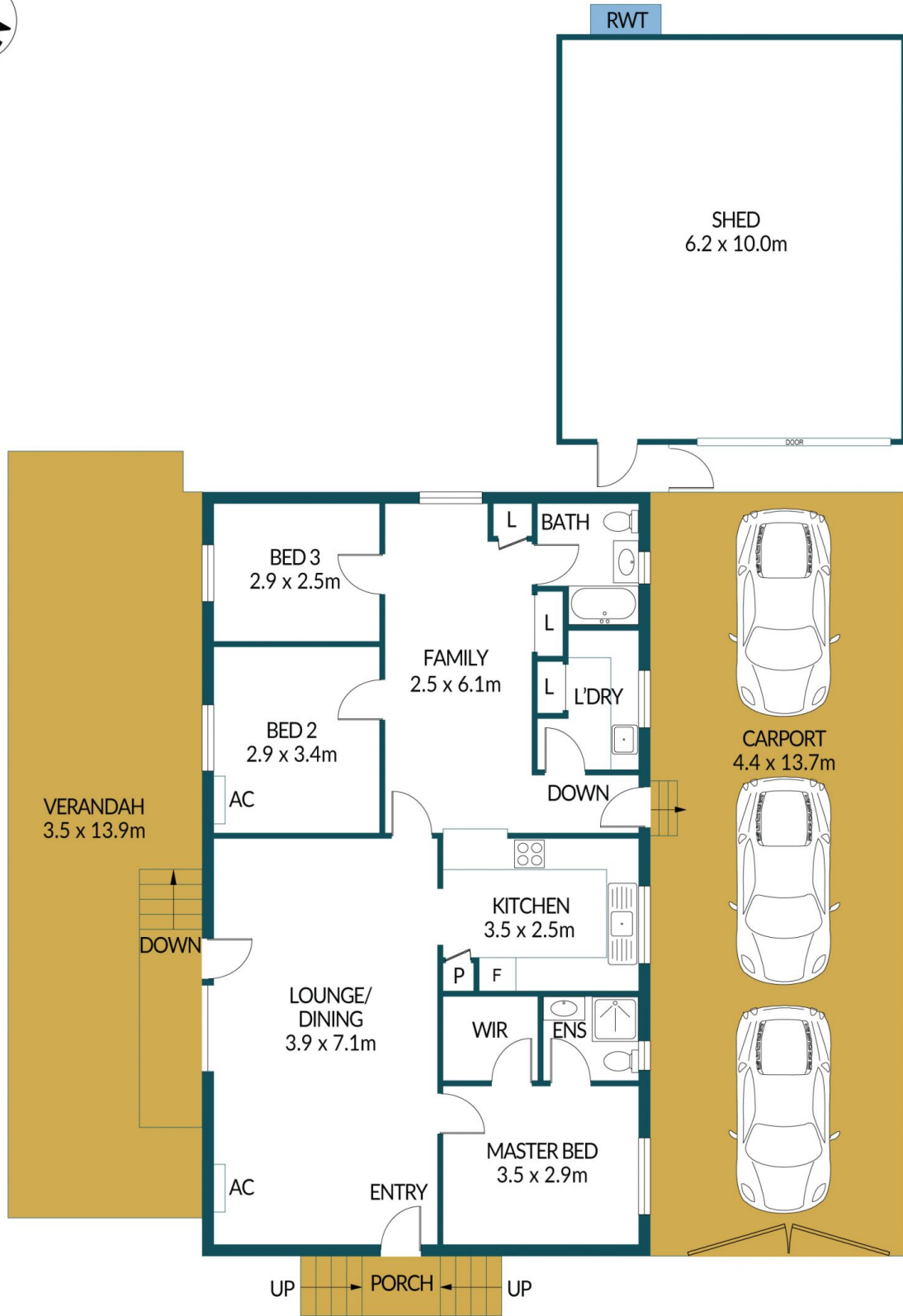
**Price** : \$ 570,000  
**Building Size** : 104 sqm  
**Land Size** : 750 sqm  
**View** : <https://www.edgerealty.com.au/sale/sa/north-north-east-suburbs/elizabeth-east/residential/house/8034247>



**Mike Lao**  
0410390250



**Tyson Bennett**  
0437161997



## 10 PAGINTON CRESCENT, ELIZABETH EAST

### Disclaimer

Plans shown are for marketing purposes only. All dimensions are approximate and not to scale. They are subject to errors and inaccuracies and no liability will be accepted. Interested parties should make their own enquiries. Inclusions and exclusions must be confirmed in the Residential Contract.

### APPROXIMATE DIMENSIONS

LIVING:	104.3m <sup>2</sup>
CARPORT/SHED:	122.3m <sup>2</sup>
PORCH:	1.3m <sup>2</sup>
VERANDAH:	48.7m <sup>2</sup>
TOTAL:	276.6m <sup>2</sup>